

Open Internet

Go to www.citynet.net

Click on Web Mail (see red circle below)

Voice, Data, and Internet Solution. Telecommunications/Internet/Web Services Provider. Fully In - ...

File Edit View Favorites Tools Help

Back Forward Stop Home Search Favorites Refresh Print Mail Web Services

Address <http://www.citynet.net/> Go Links

CITYNET.

www.citynet.net

Inside Citynet Contact Us Locations News/Events

Featured Products...

Finally, Citynet has developed a technology flexible enough to meet your needs: **iTone**, an integrated **Voice, Data, and Internet Solution**. Via **iTone** your company receives Voice, Dedicated High Speed Internet, and Fax Lines all delivered over one connection. **iTone** is a flexible solution tailored to your business for **One Low Monthly Rate**.

ONE connection...
ONE provider...
ONE bill...

ONE LOW PRICE

iTone

Finally **one IT solution**

About Citynet...

History has proven that in the Telecommunications/Internet industry only companies that can deliver exceptional products at a low cost while still providing exceptional customer service can survive. That is why Citynet has continually grown from an established provider of Internet/Tele...

National Headquarters

Bridgeport, WV
113 Platinum Dr.
Bridgeport, WV 26330
Phone 304.848.5400
Support 800.881.2638
Sales 800.903.8906
Fax 304.848.5410

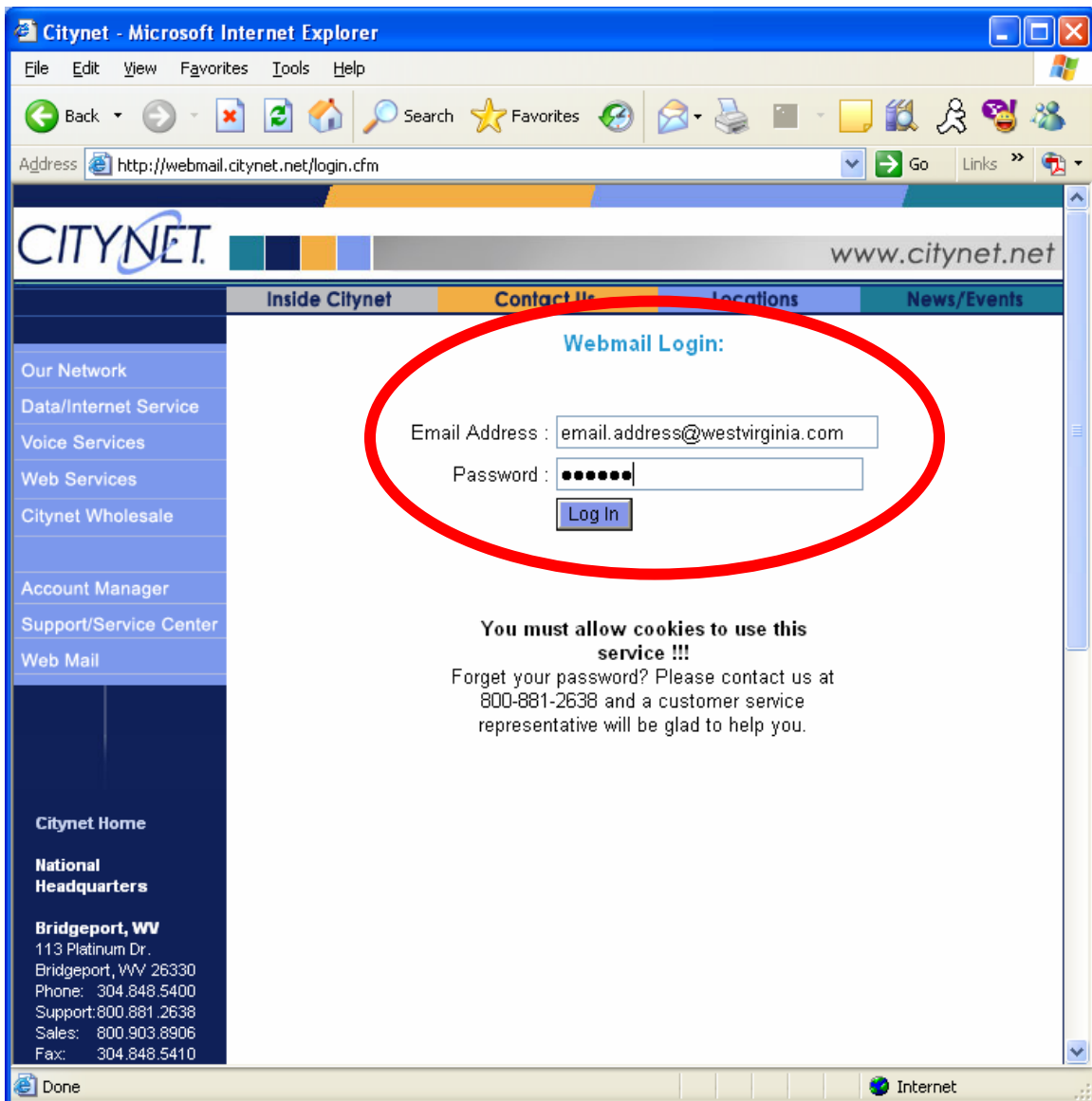
Regional Offices

Columbus, OH
Austin, TX
Chicago, IL
Cincinnati, OH
Dallas, TX
Indianapolis, IN
Phoenix, AZ
Pittsburgh, PA
San Antonio, TX
Tri-Cities, TN
Tulsa, OK

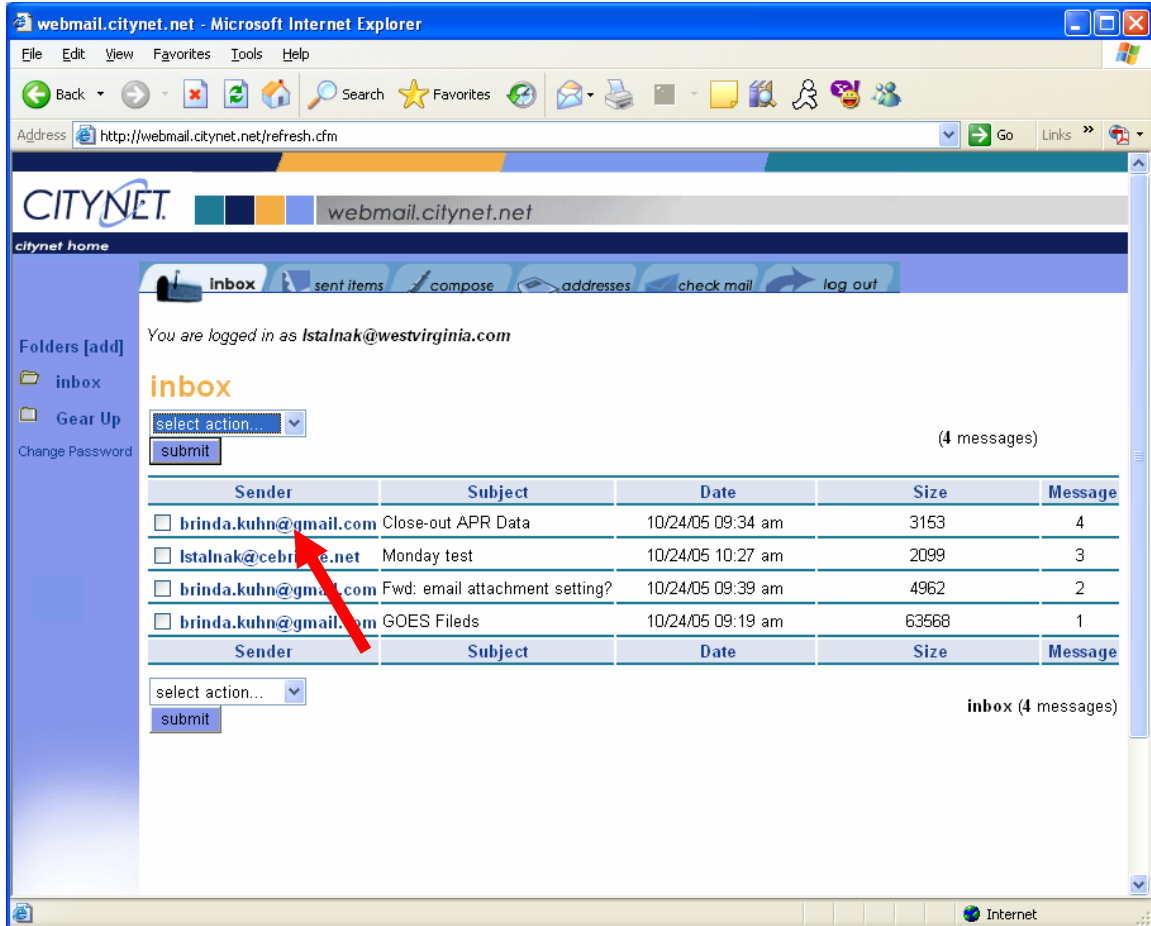
Search the Internet

Internet

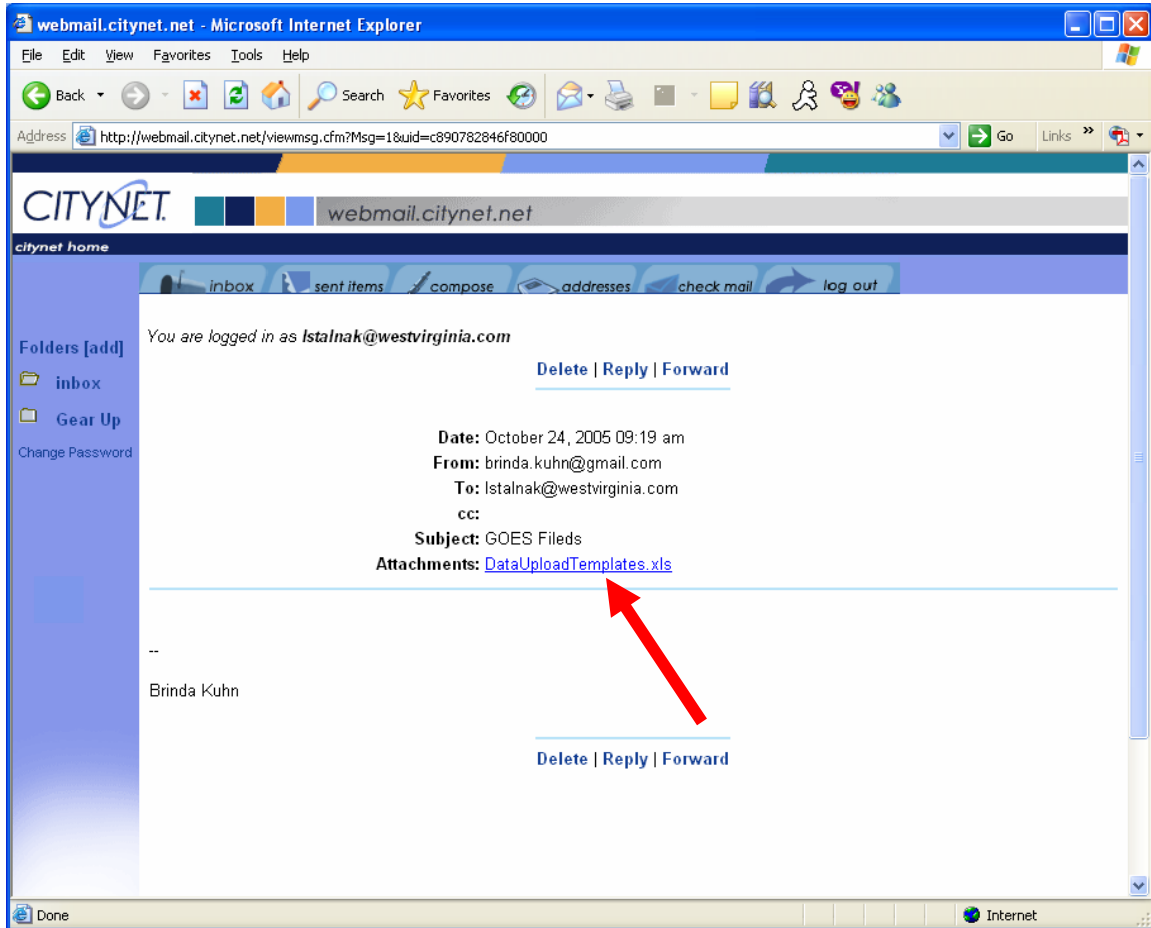
Enter your email address (i.e. lumberport.sc@westvirginia.com)
Enter your password – (see red circle below)
Click on Log In



Once in you're inbox click on senders name to read the message. (see red arrow below)



If a message contains an attachment you will see a line under **Subject** which says **Attachments**. Click on the link to open or save the attachment. (see red arrow below)



If you need assistance please contact the Citynet Helpdesk at (866) 332-8489 or (304) 848-5432.