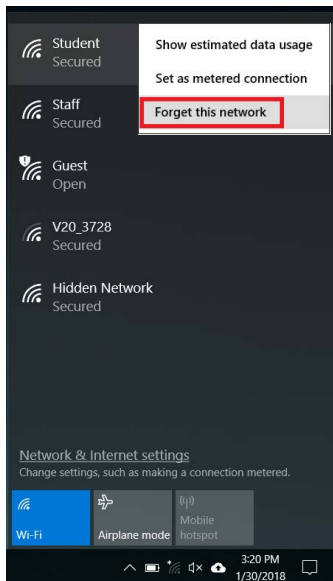


Windows 8.1 Wireless Configuration

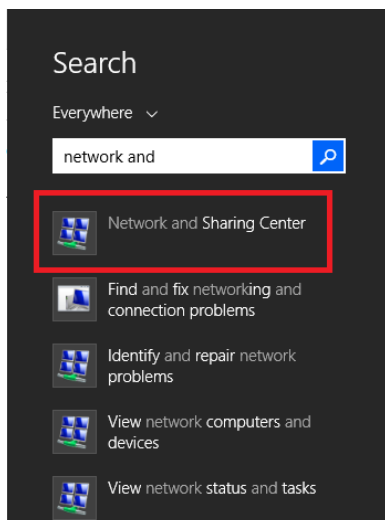
1. View your available Wireless networks by clicking the Wireless icon in the taskbar.



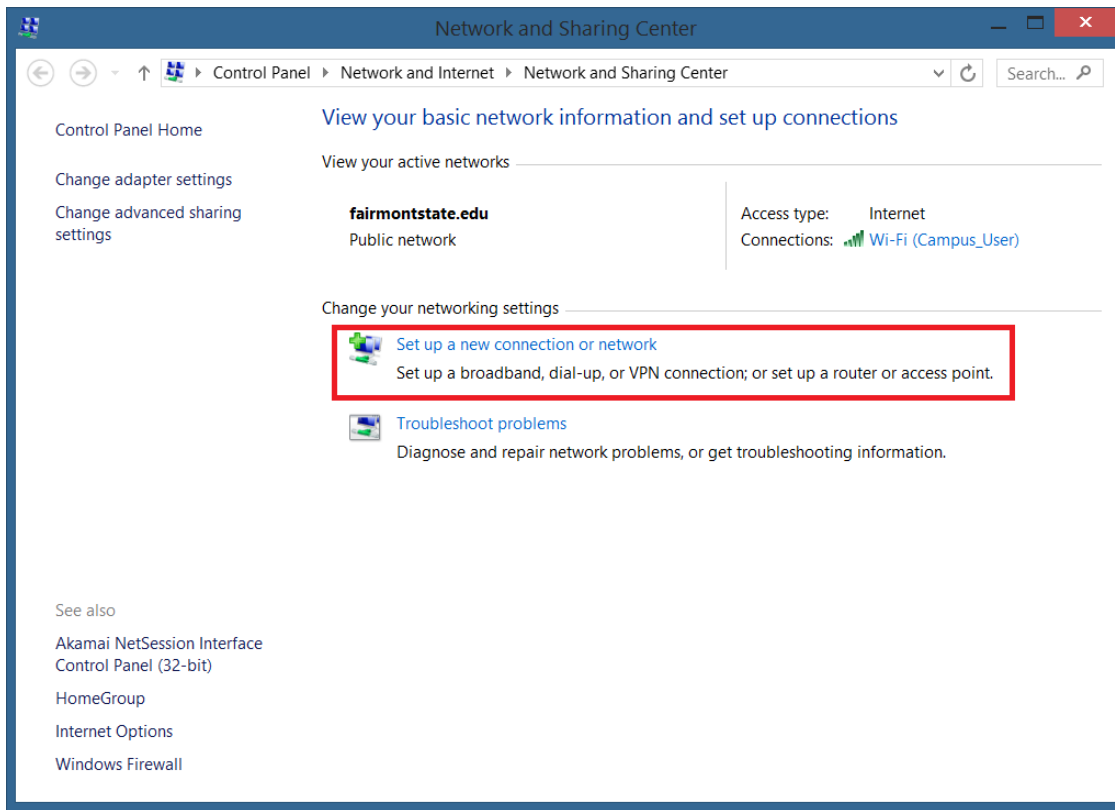
2. Right click on “Student”
3. If the option exists, click “Forget this network”. Otherwise, continue to step 4.



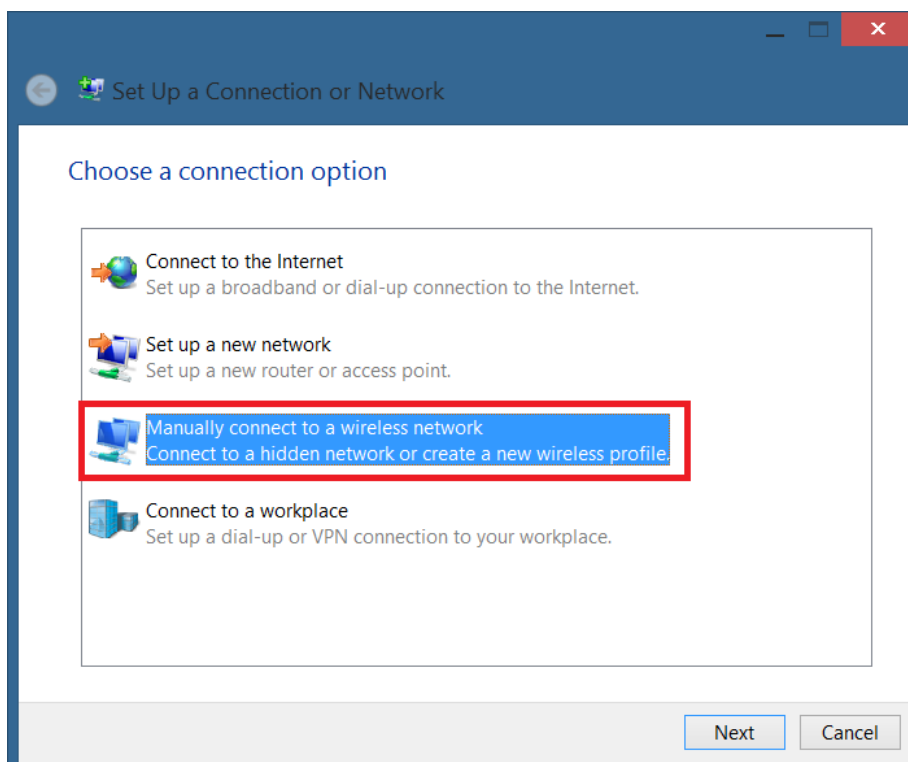
4. Press Windows Key + S
5. Search “Network and Sharing”
6. Click “Network and Sharing Center”



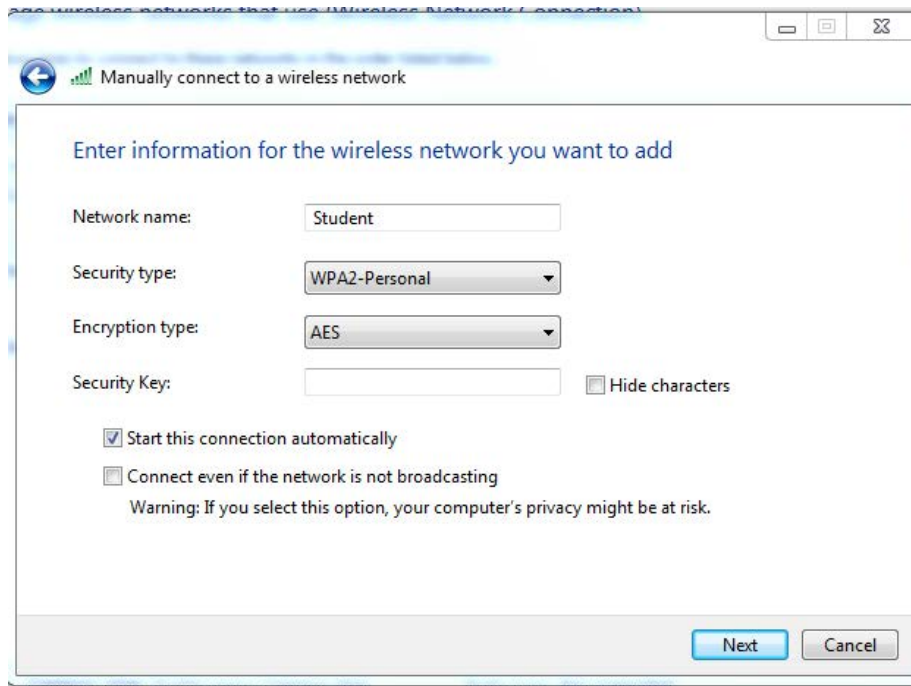
7. Click “Set up a new connection or network”



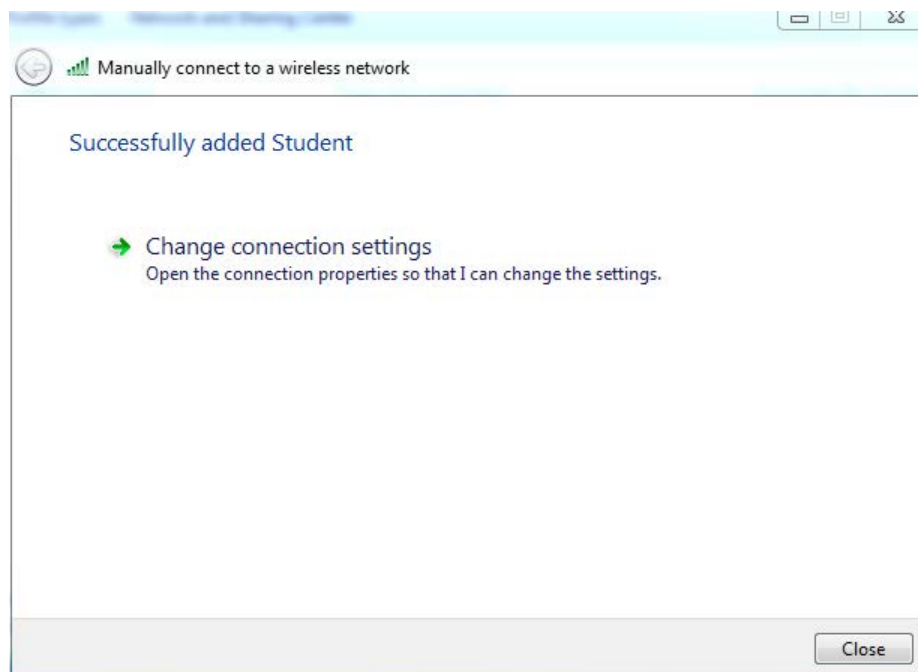
8. Choose “Manually connect to a wireless network”



9. Enter "Student" as the network name
10. Set security type to "WPA2-Enterprise"
11. Click "Next"

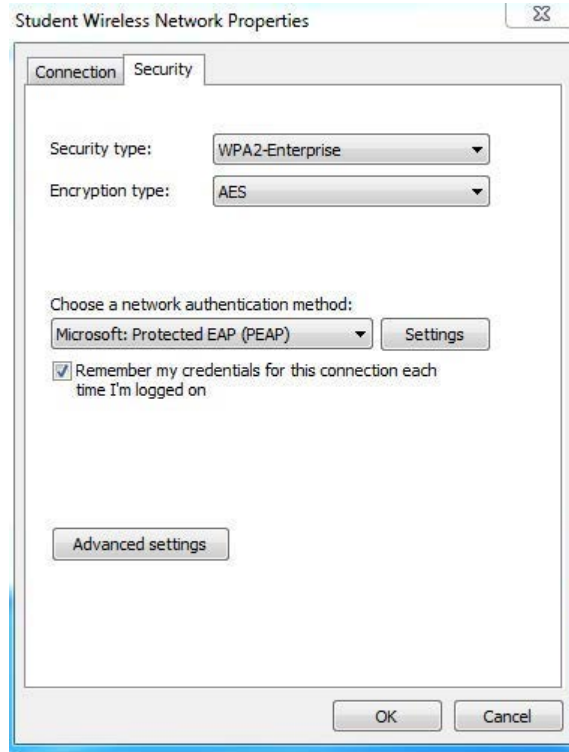


12. Click "Change connection settings"



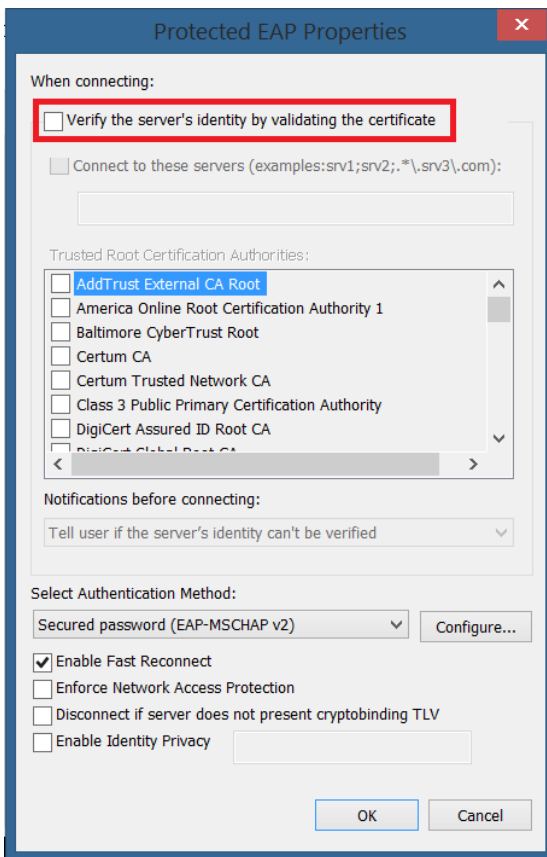
13. Click the “Security” tab.

14. Click “Settings”



15. Uncheck “Verify the server’s identity”

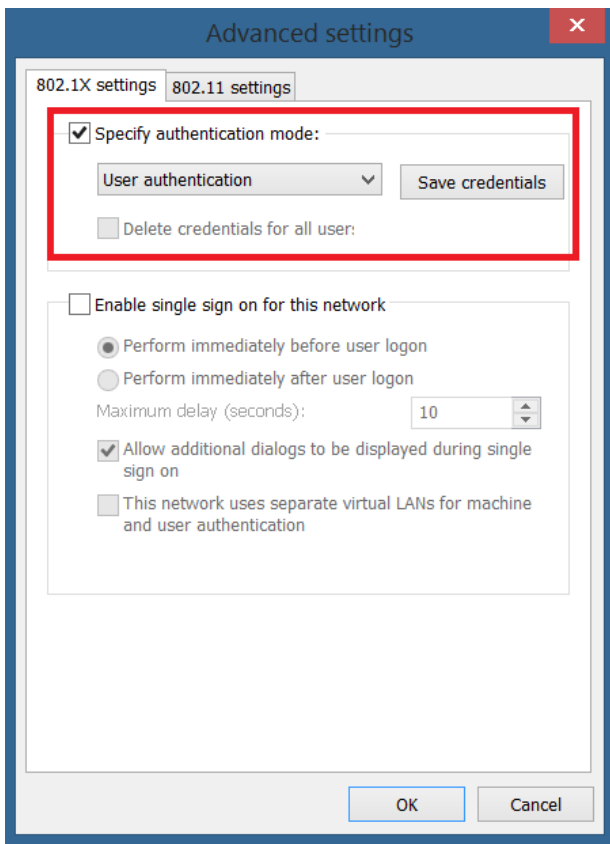
16. Click “OK”



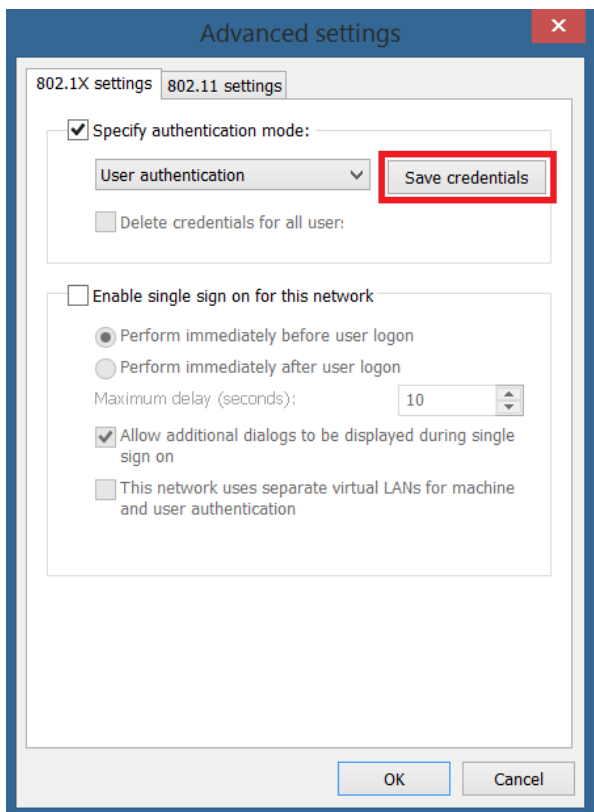
17. Click “Advanced Settings”



18. Check “Specify authentication mode” and set it to “User authentication”

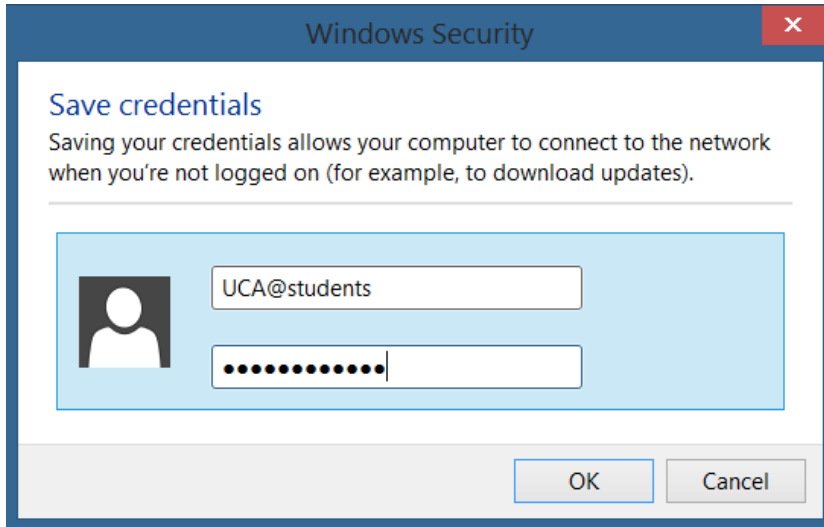


19. Click “Save credentials”

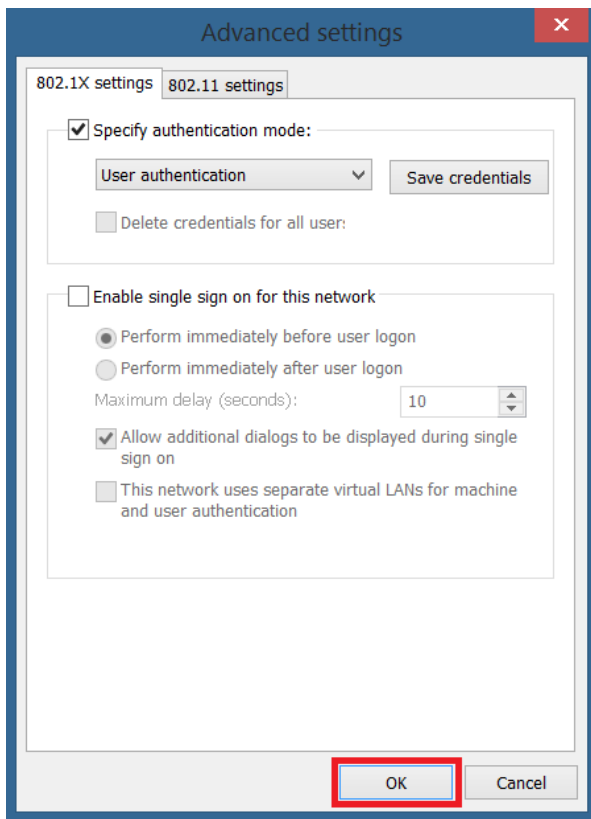


20. Enter your UCA followed by “@students”, and then enter your password. (Your UCA is the first part of your student email)

21. Click “OK”



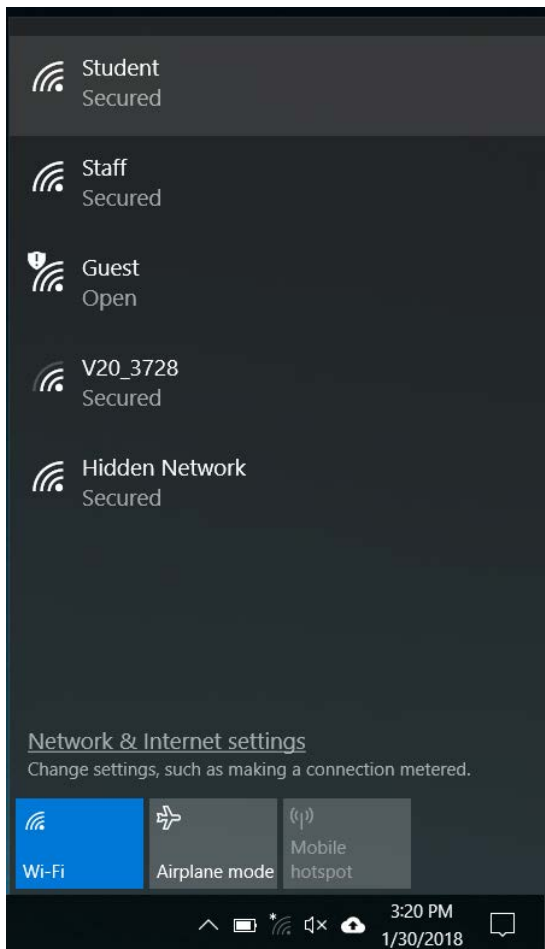
22. Click “OK” again



23. View your available Wireless networks by clicking the Wireless icon in the taskbar.



24. Select “Student” and click “Connect”



25. Enter your UCA followed by “@students”, and then enter your password. (Your UCA is the first part of your student email). Click "Connect".

26. Congratulations, you are now connected to Wifi!