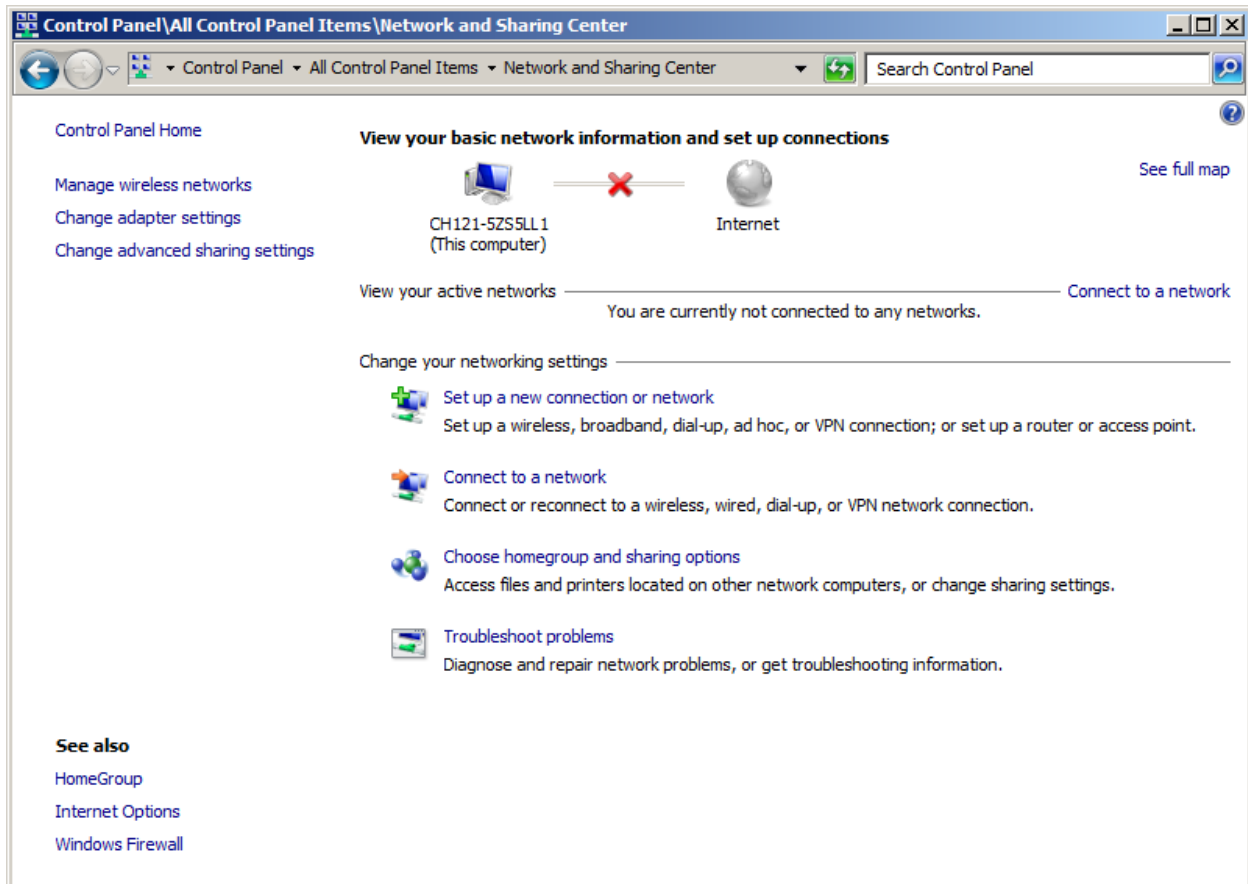


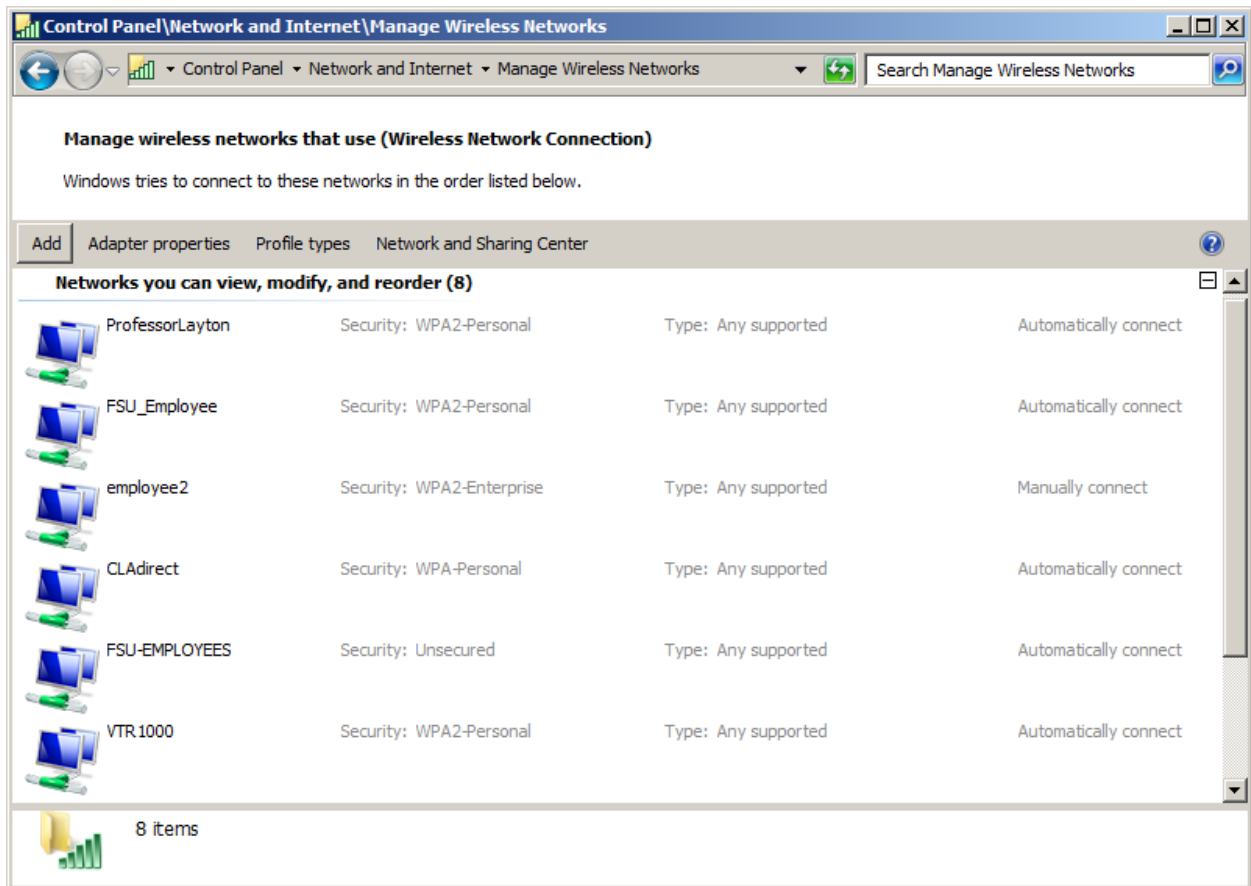
## Windows 7 Wireless Configuration for 802.1x

Go to Start → Control Panel → Network and Internet

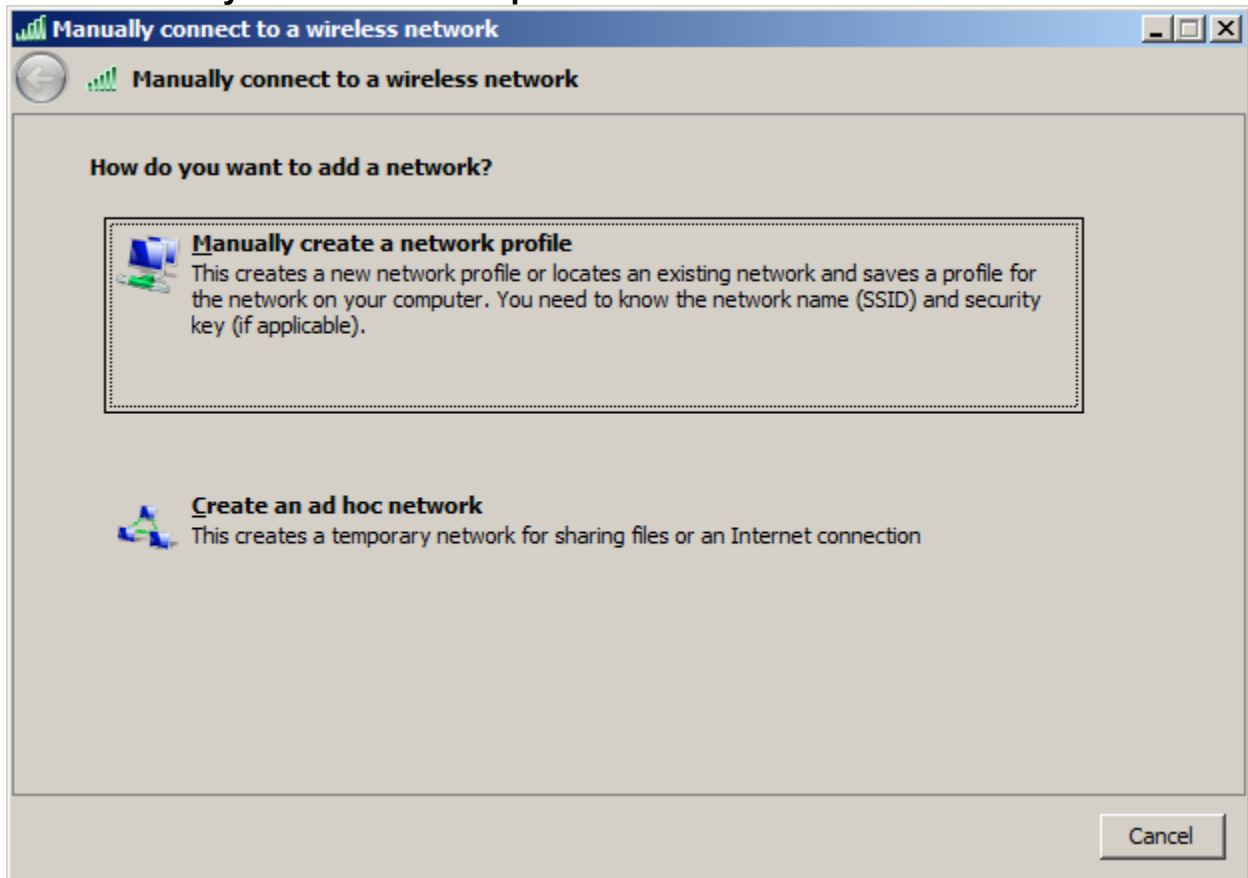
Click “Manage wireless networks” on the left



Click "Add"



Click "Manually create a network profile"



Enter the information exactly as pictured below

**Manually connect to a wireless network**

Manually connect to a wireless network

**Enter information for the wireless network you want to add**

Network name:

Security type:

Encryption type:

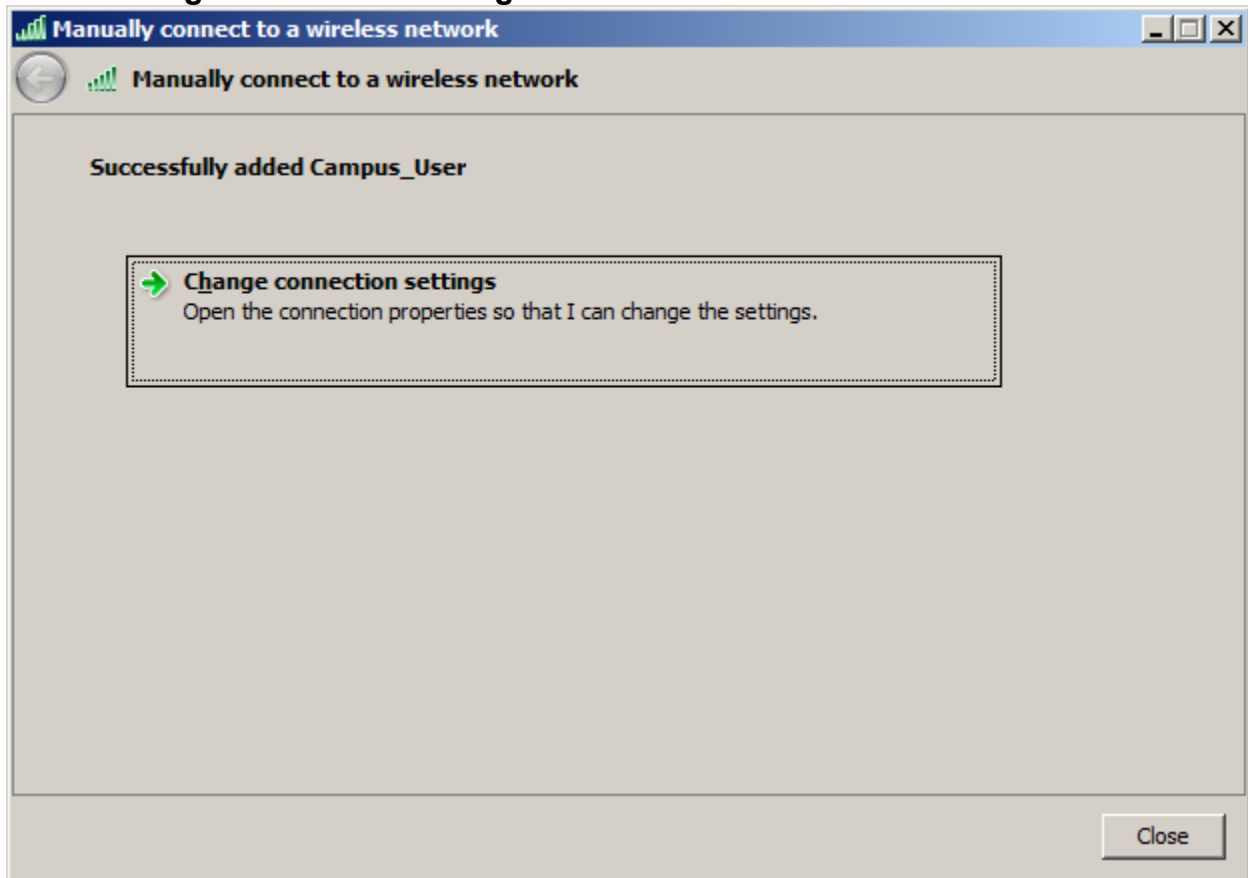
Security Key:   Hide characters

Start this connection automatically

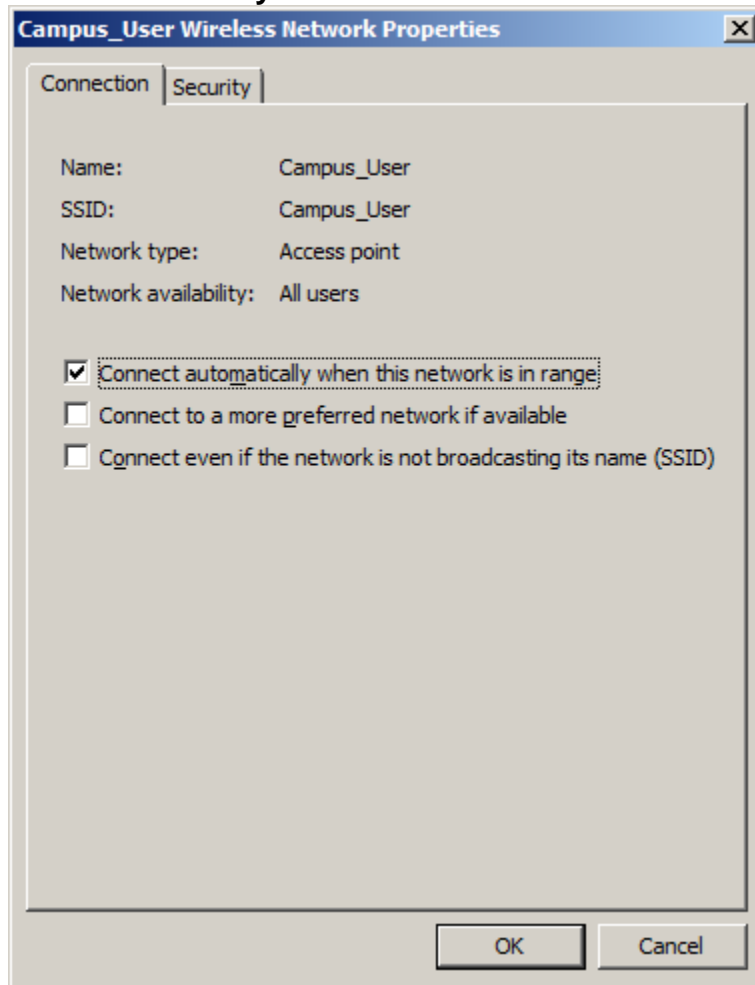
Connect even if the network is not broadcasting

Warning: If you select this option, your computer's privacy might be at risk.

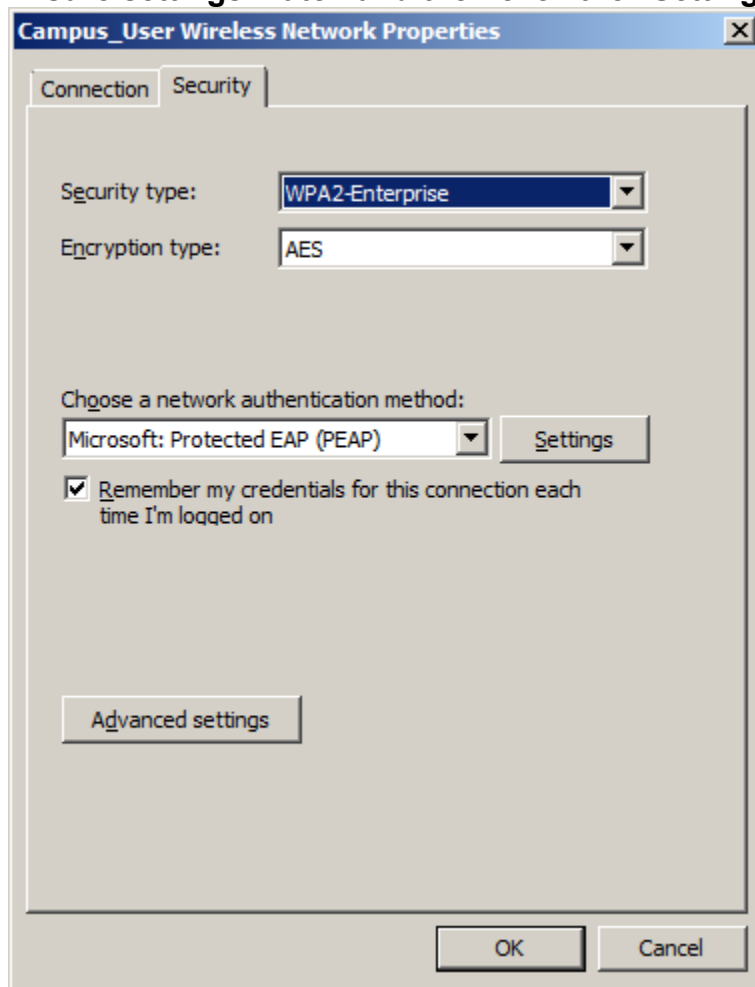
Click "Change connection settings"



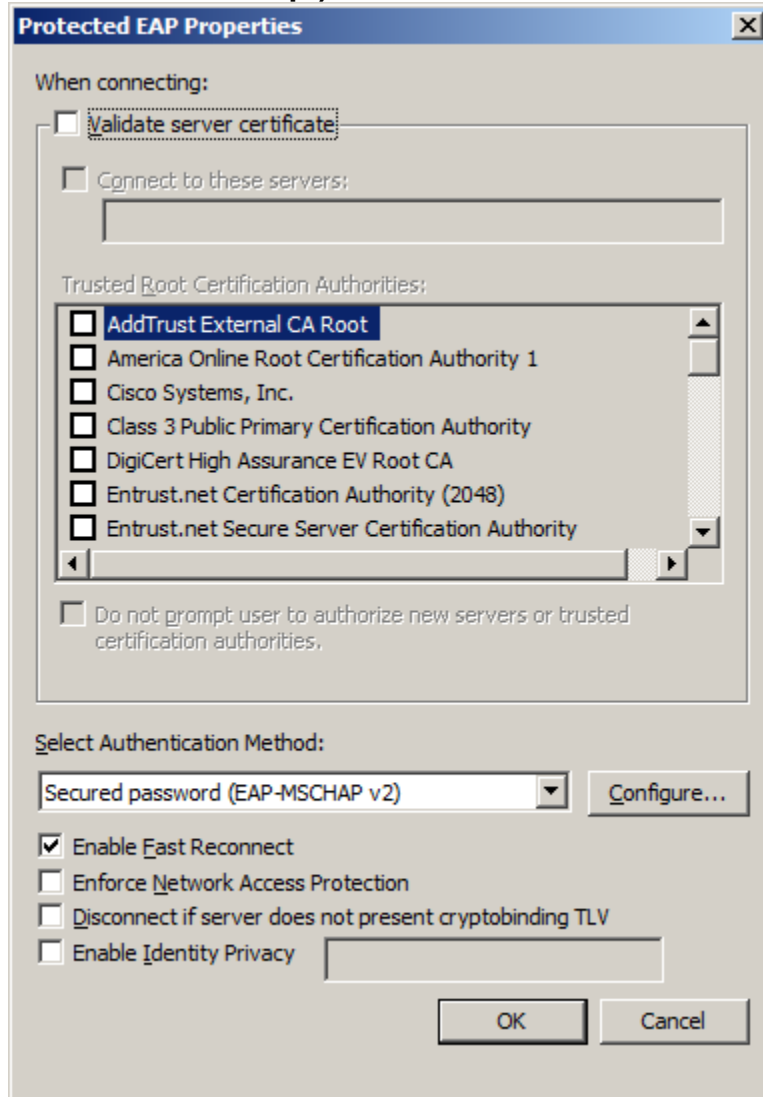
## Click the Security tab



Ensure settings match and then click the “Settings...” button

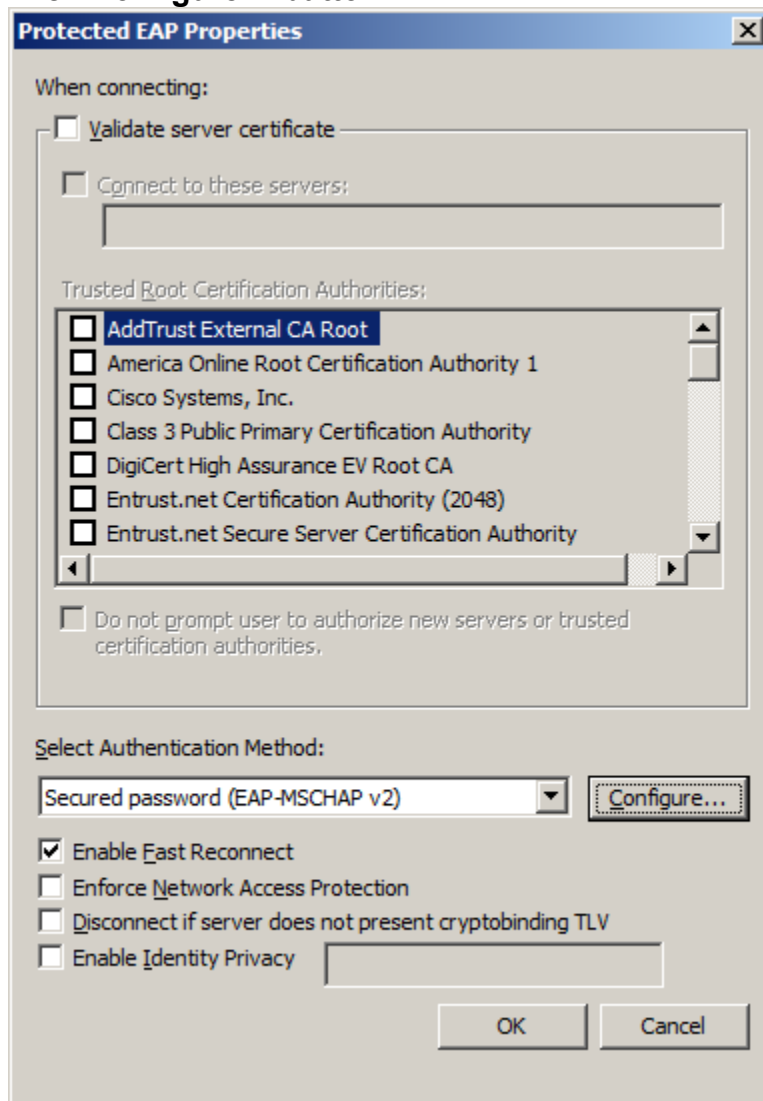


**Uncheck Validate server certificate (our certificate is wireless.fairmontstate.edu and is safe to accept)**

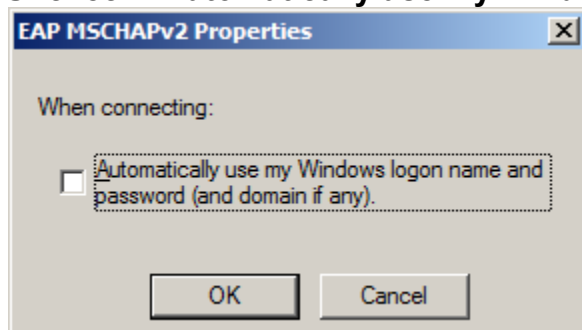




## Click Configure... button

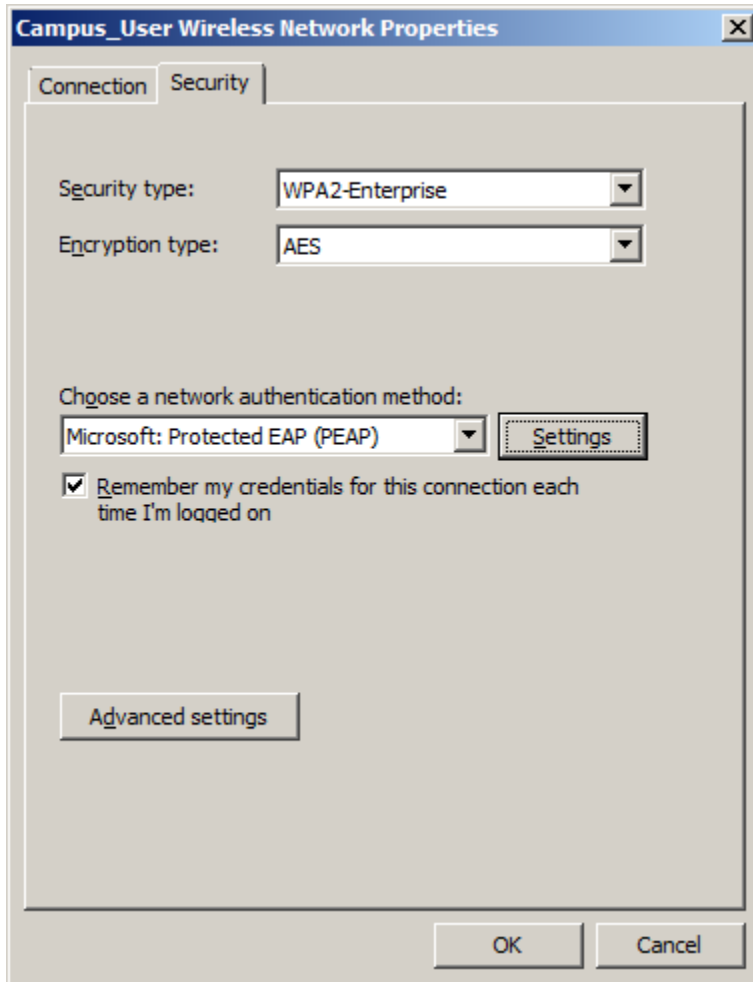


## Uncheck "Automatically use my Windows logon name and password"

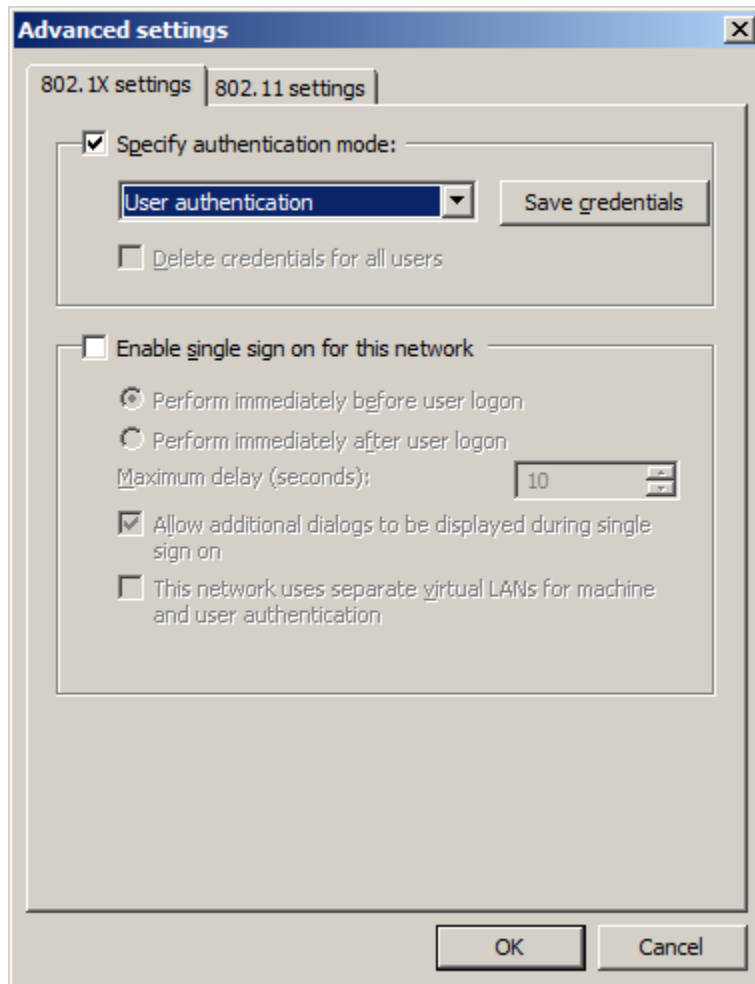


## Click OK

Click the “Advanced settings”

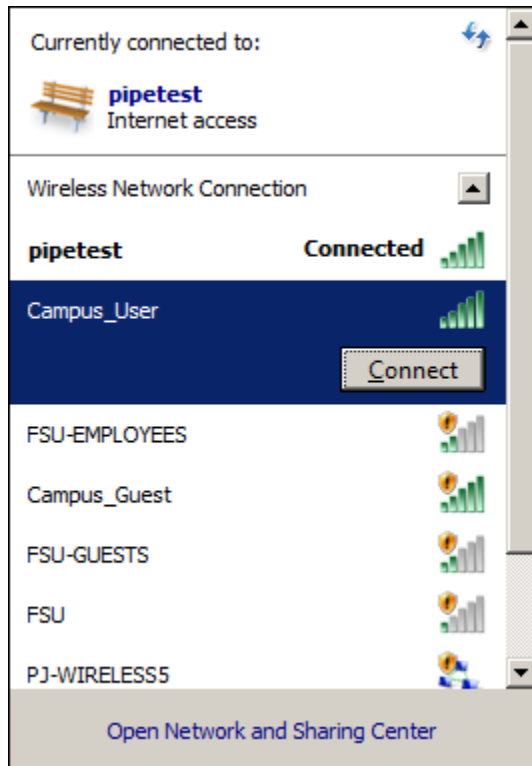


Check “Specify authentication mode:” and select “User Authentication



Click OK → OK → Close

**View available wireless networks and connect to Campus\_User**



**Enter you UCA for the User name and your password**

**NOTE: Students MUST enter username as: UCA@students**

