

4. Click connect.

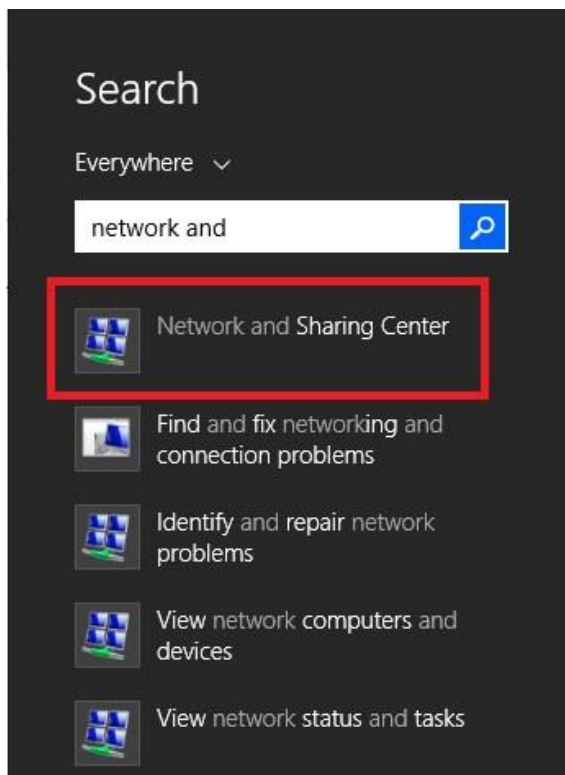
5. Your computer should now connect to the network. If this does not work, reboot and try again.

If after rebooting you still cannot connect, try the manual configuration steps below.

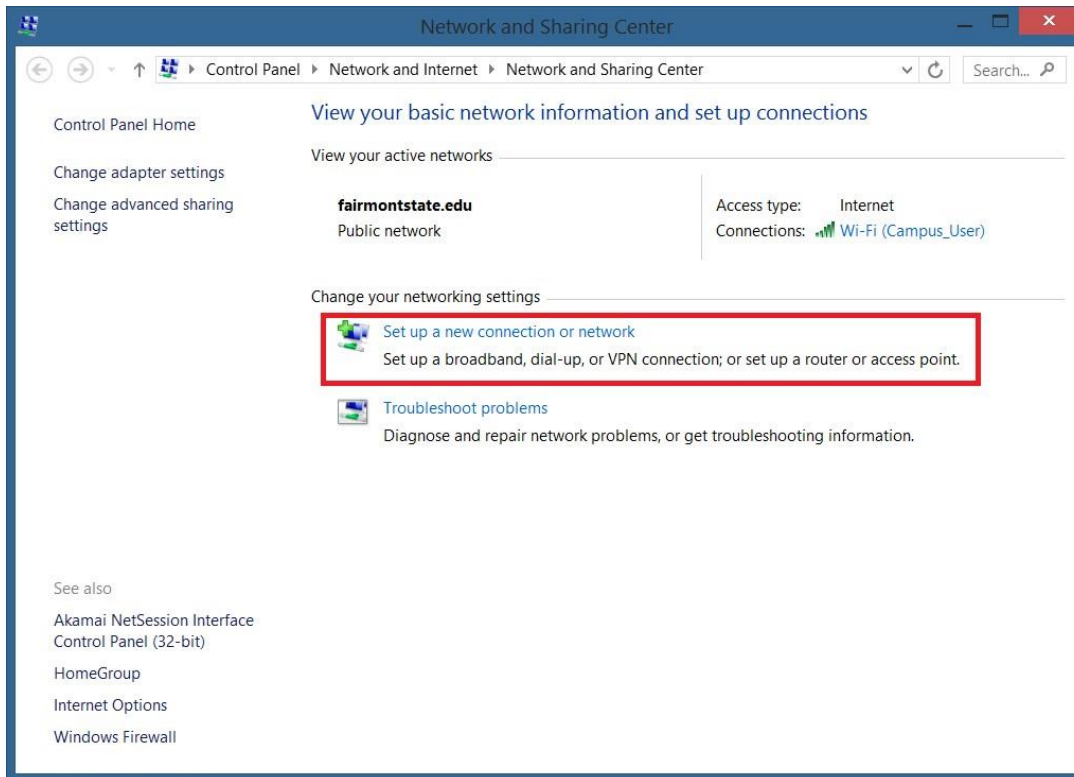
Manual Configuration

In some cases a computer may need to be configured manually in order to connect. If you have tried all the above steps with no luck, you can try manual configuration using the steps below.

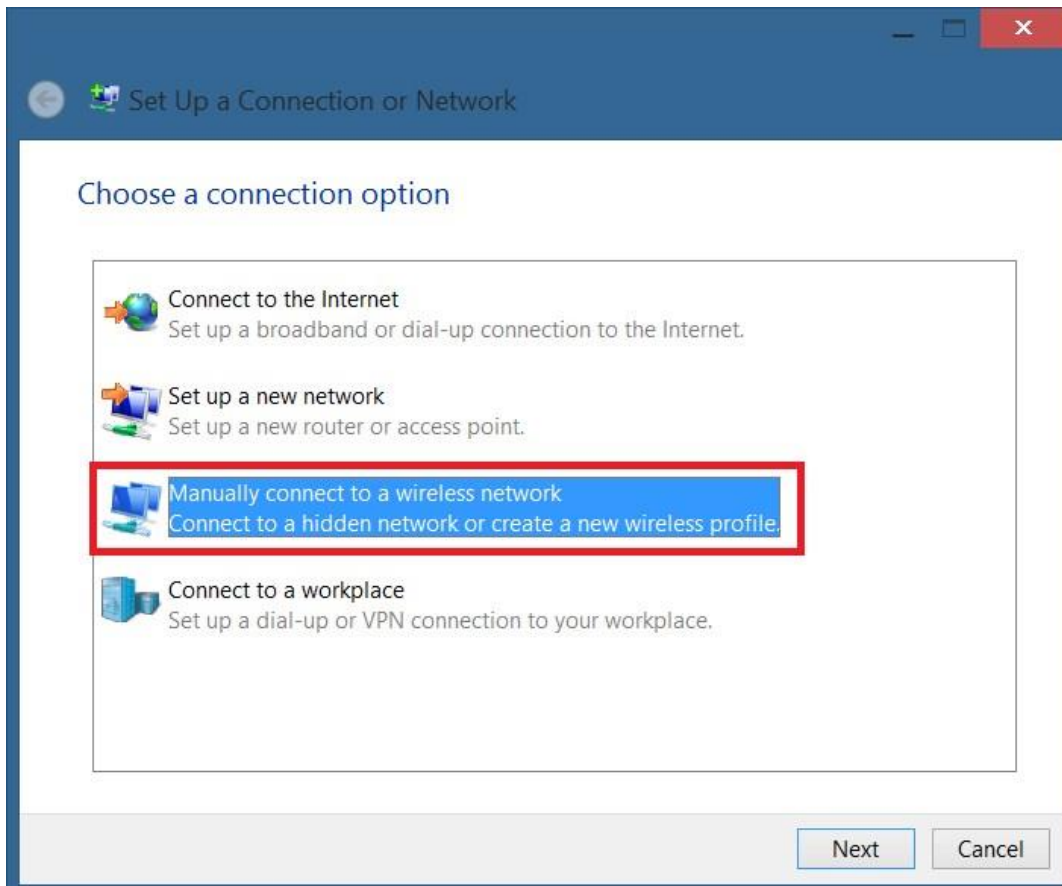
1. Press the Windows Key
2. Search “Network and Sharing”
3. Click “Network and Sharing Center”



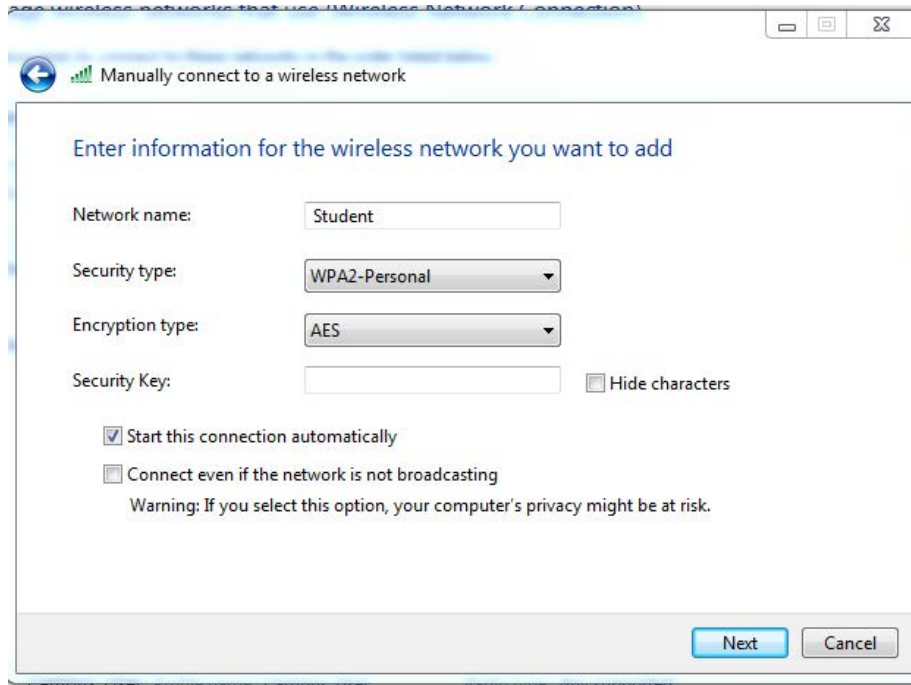
4. Click “Set up a new connection or network”



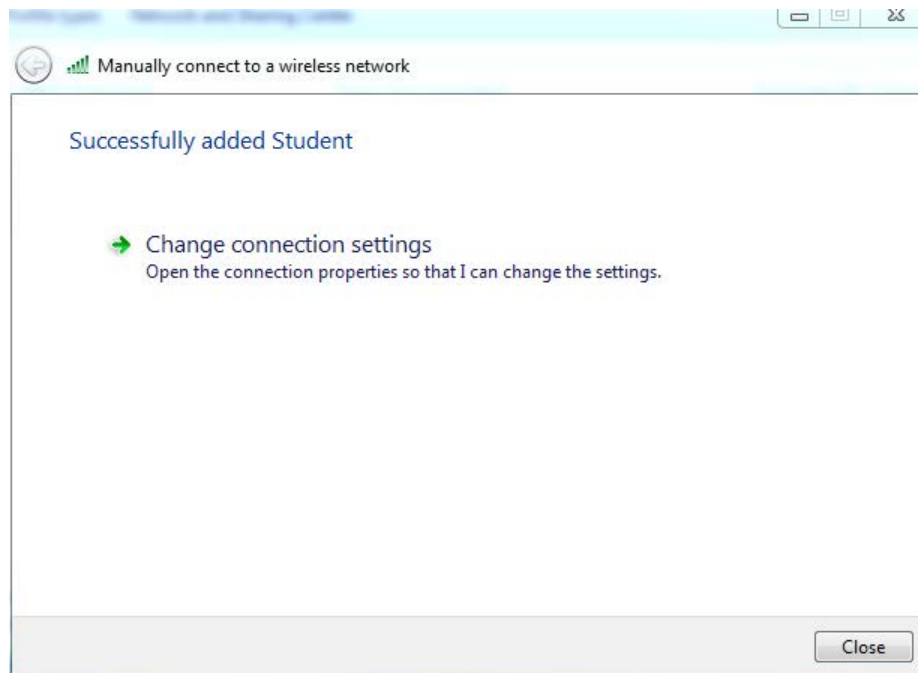
5. Choose “Manually connect to a wireless network”



6. Enter “Student” as the network name.
7. Set security type to “WPA2-Enterprise”
8. Click “Next”

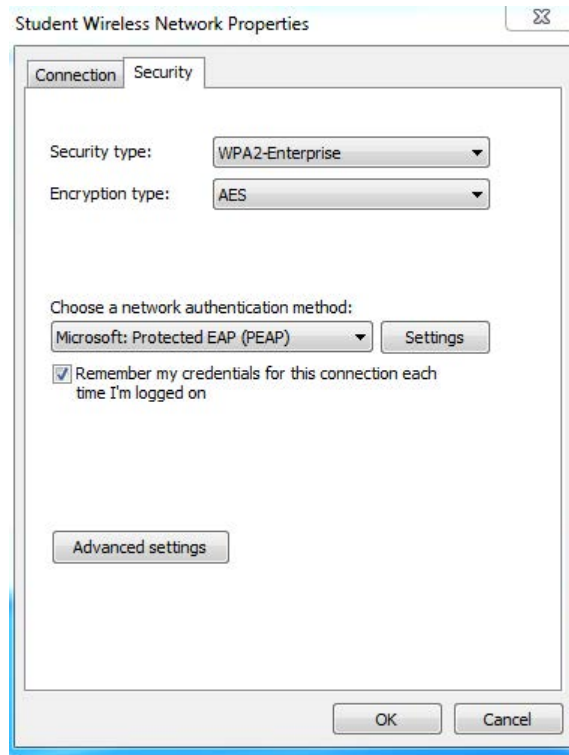


9. Click “Change connection settings”



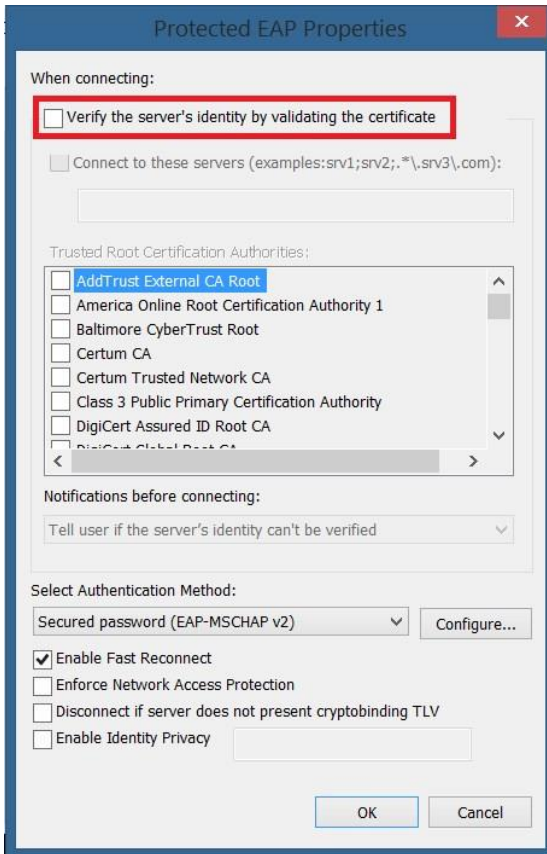
10. Click the “Security” tab.

11. Click “Settings”

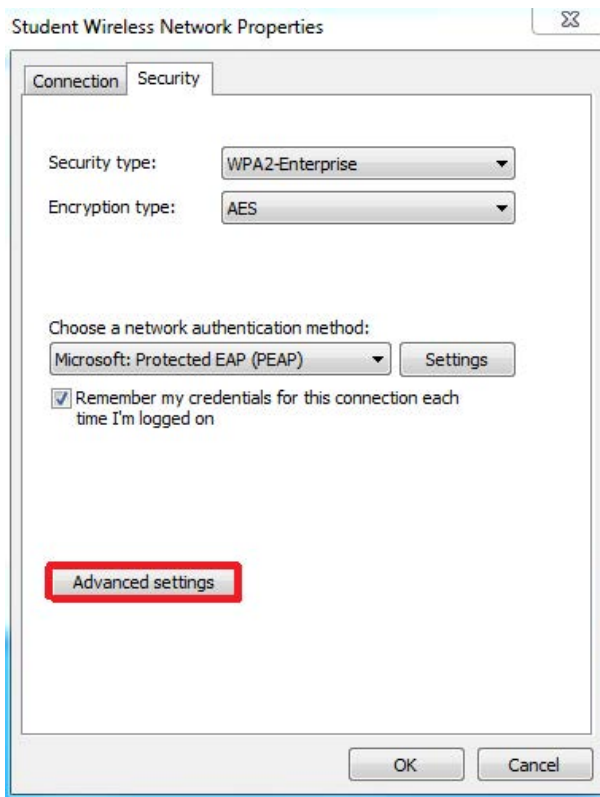


12. Uncheck “Verify the server’s identity”

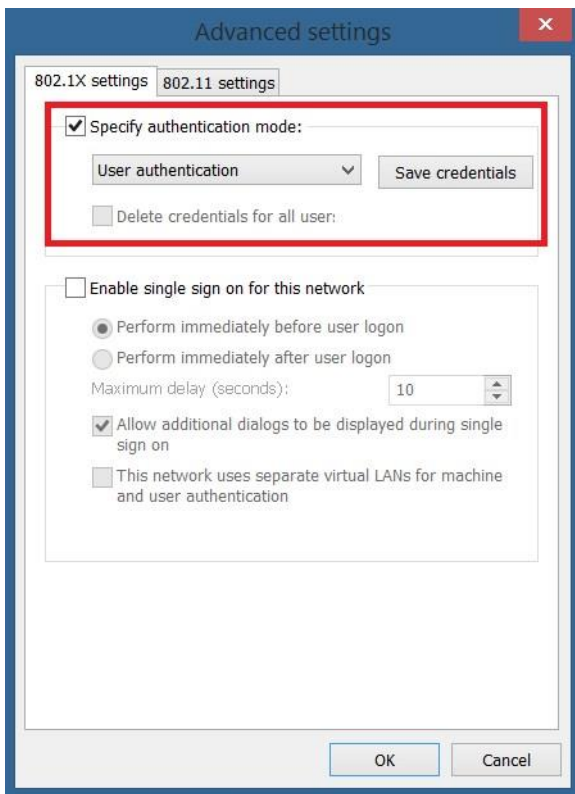
13. Click “OK”



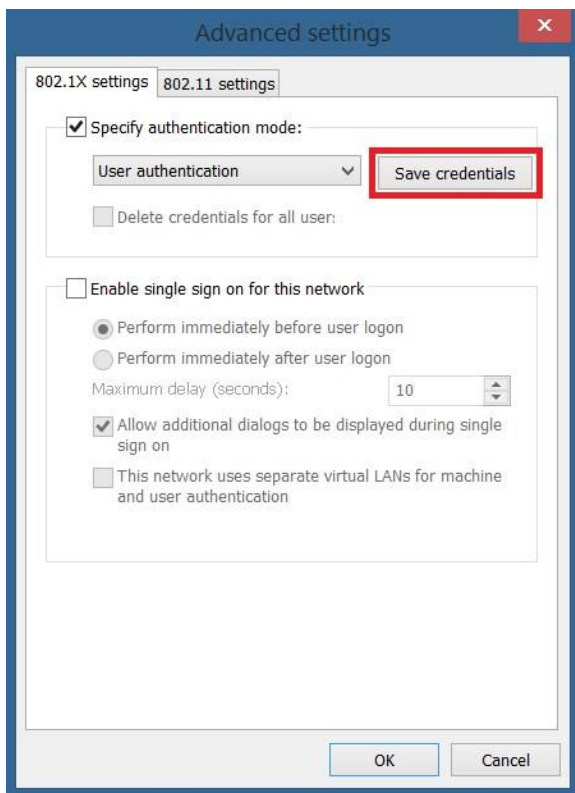
14. Click “Advanced Settings”



15. Check “Specify authentication mode” and set it to “User authentication”



16. Click “Save credentials”

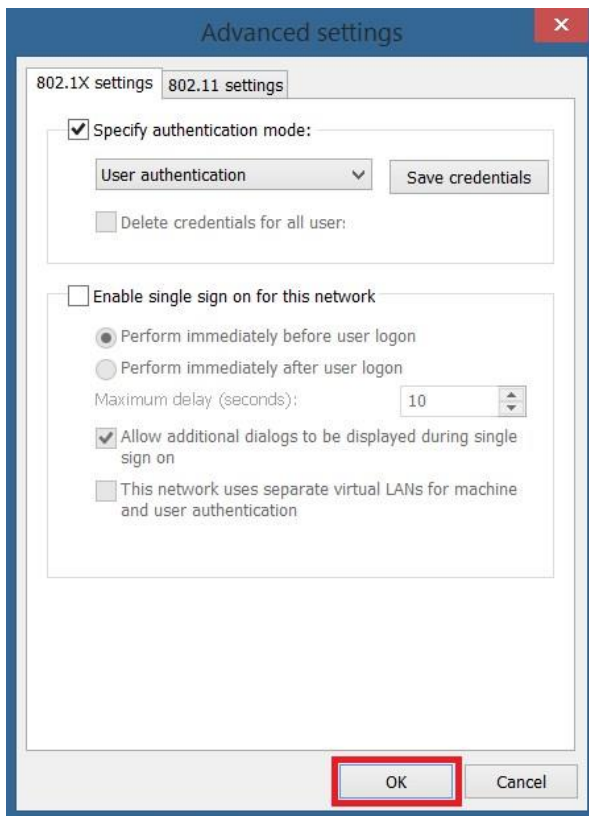


17. Enter your UCA followed by “@students”, and then enter your password. (Your UCA is the first part of your student email)

18. Click “OK”



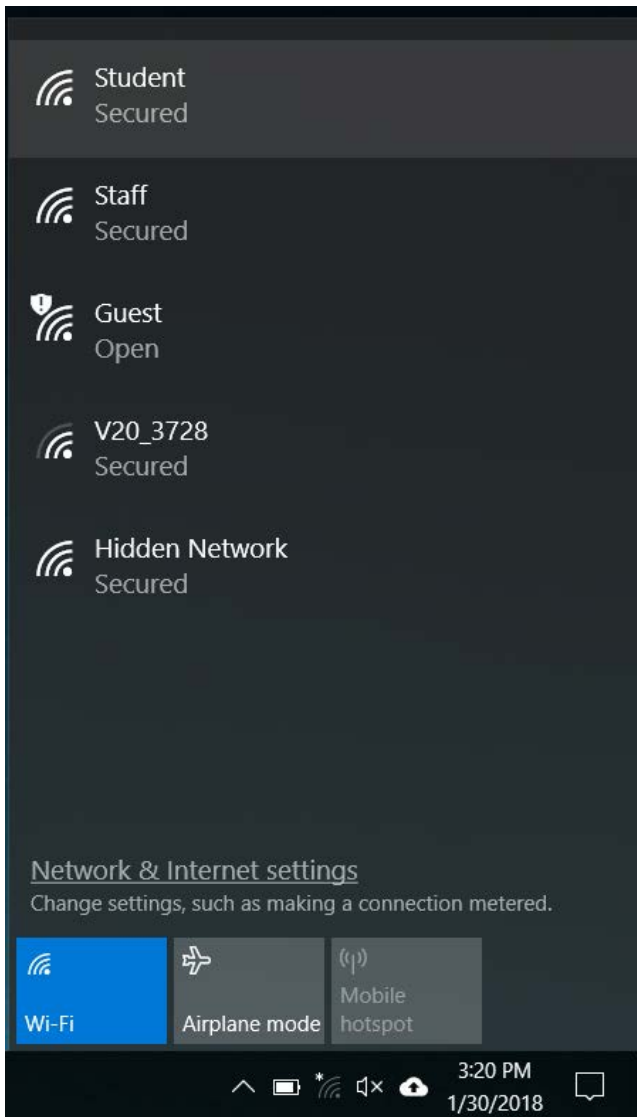
19. Click “OK” again



20. View your available Wireless networks by clicking the Wireless icon in the taskbar.



21. Select “Student” and click “Connect”



Your computer should now connect to the network. If these steps have failed, take your computer to the IT Commons located in the library, room 139, and we will assist you.