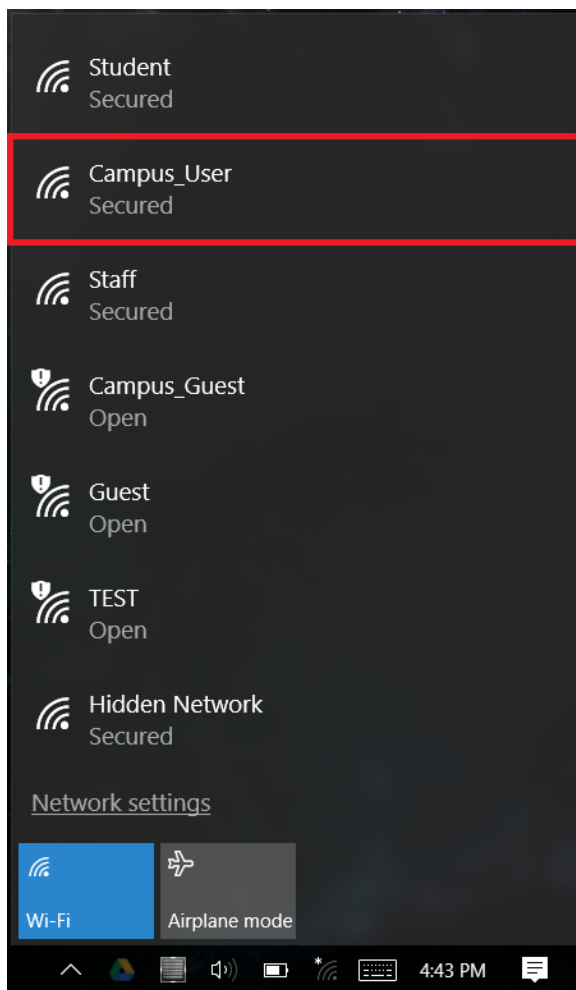


# Windows 10 Wireless Configuration for 802.1x

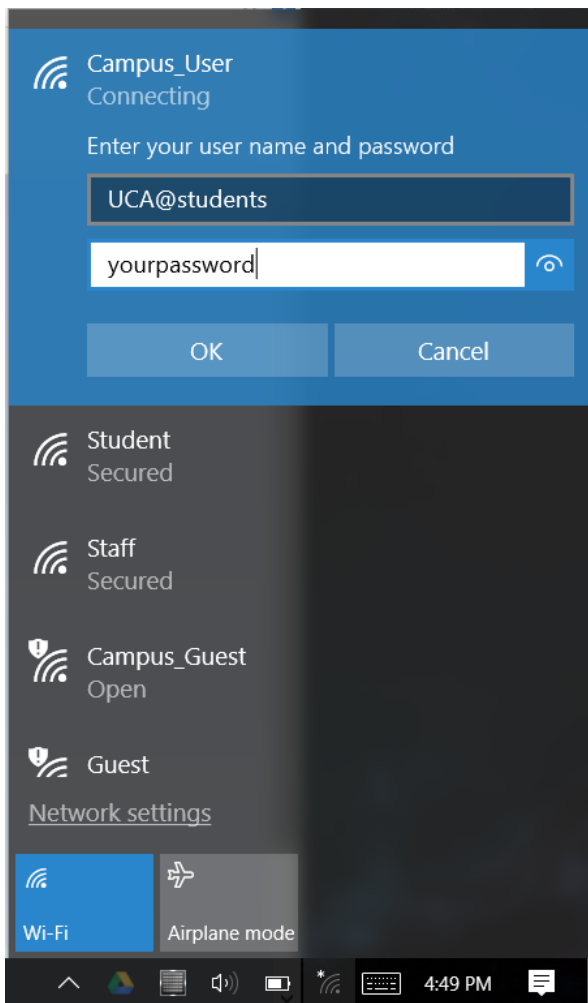
1. View your available Wireless networks by clicking the Wireless icon in the taskbar.



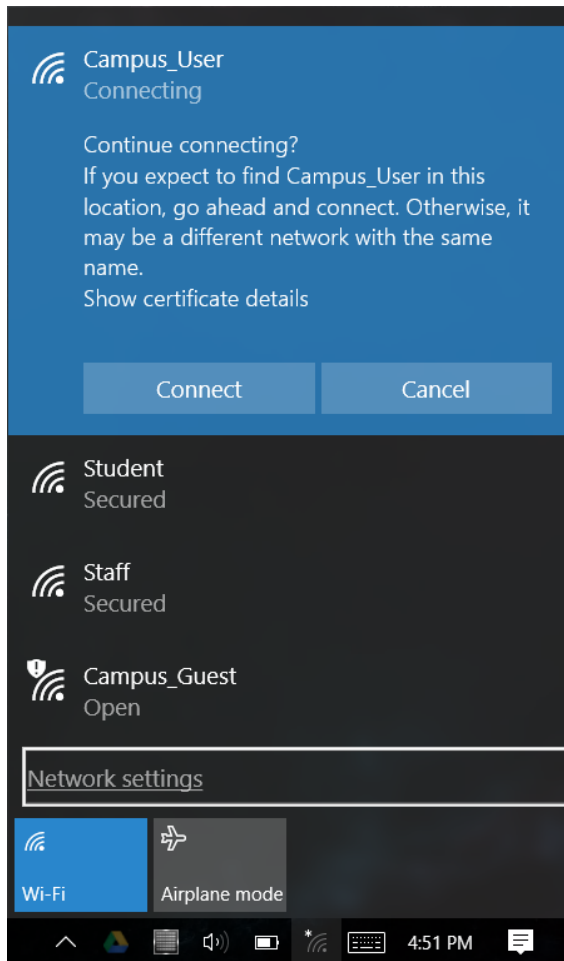
2. Click “Campus\_User” and then click connect. (Instructions are the same for the “Student” network; just click that instead.)



3. Enter your UCA followed by “@students”, enter your password, and click OK.



#### 4. Click connect.



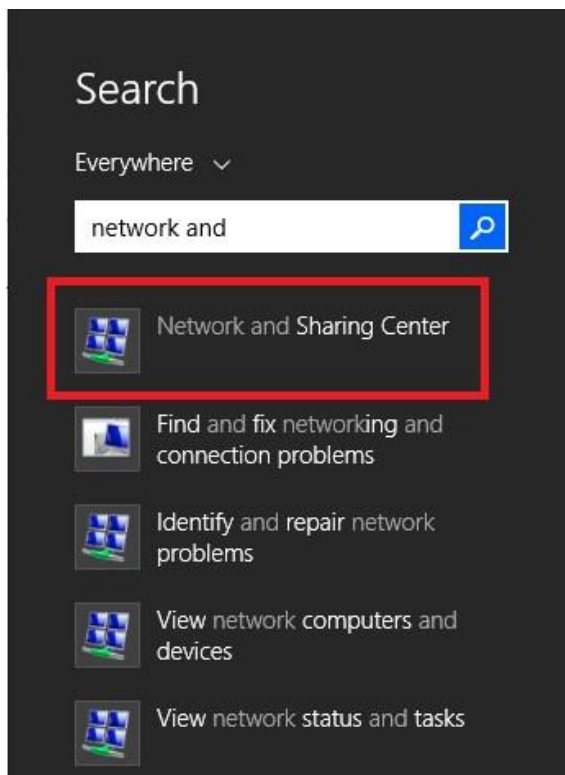
#### 5. Your computer should now connect to the network. If this does not work, reboot and try again.

If after rebooting you still cannot connect, try the manual configuration steps below.

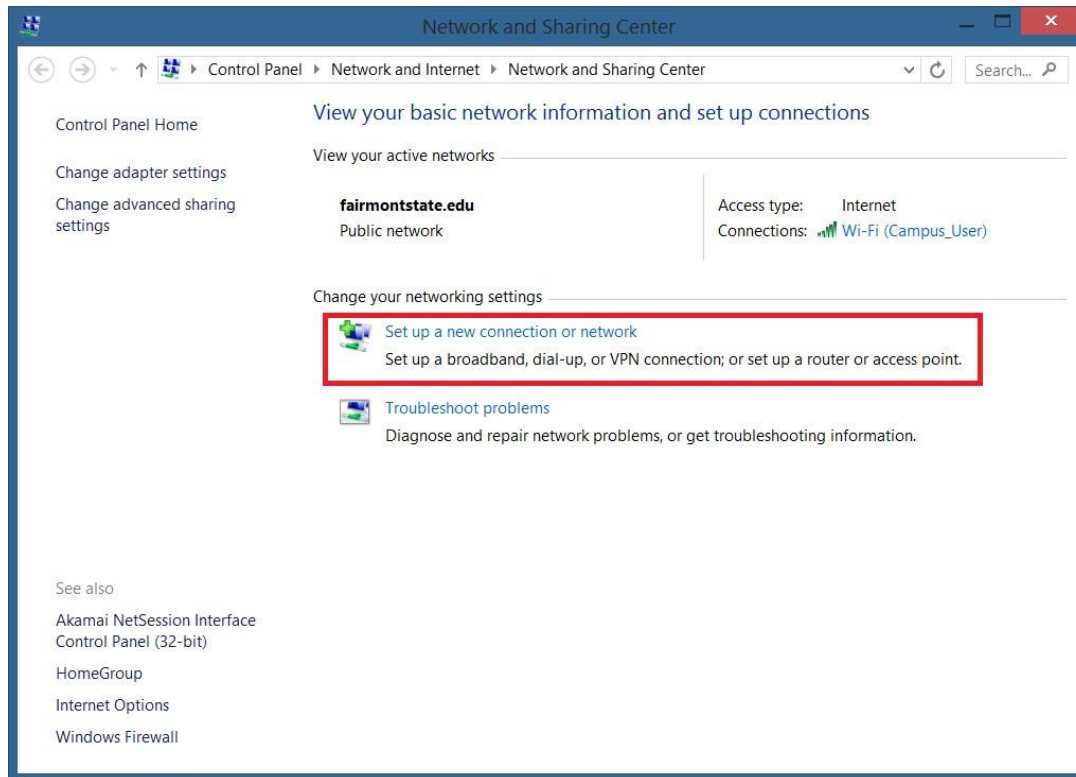
# Manual Configuration

In some cases a computer may need to be configured manually in order to connect. If you have tried all the above steps with no luck, you can try manual configuration using the steps below.

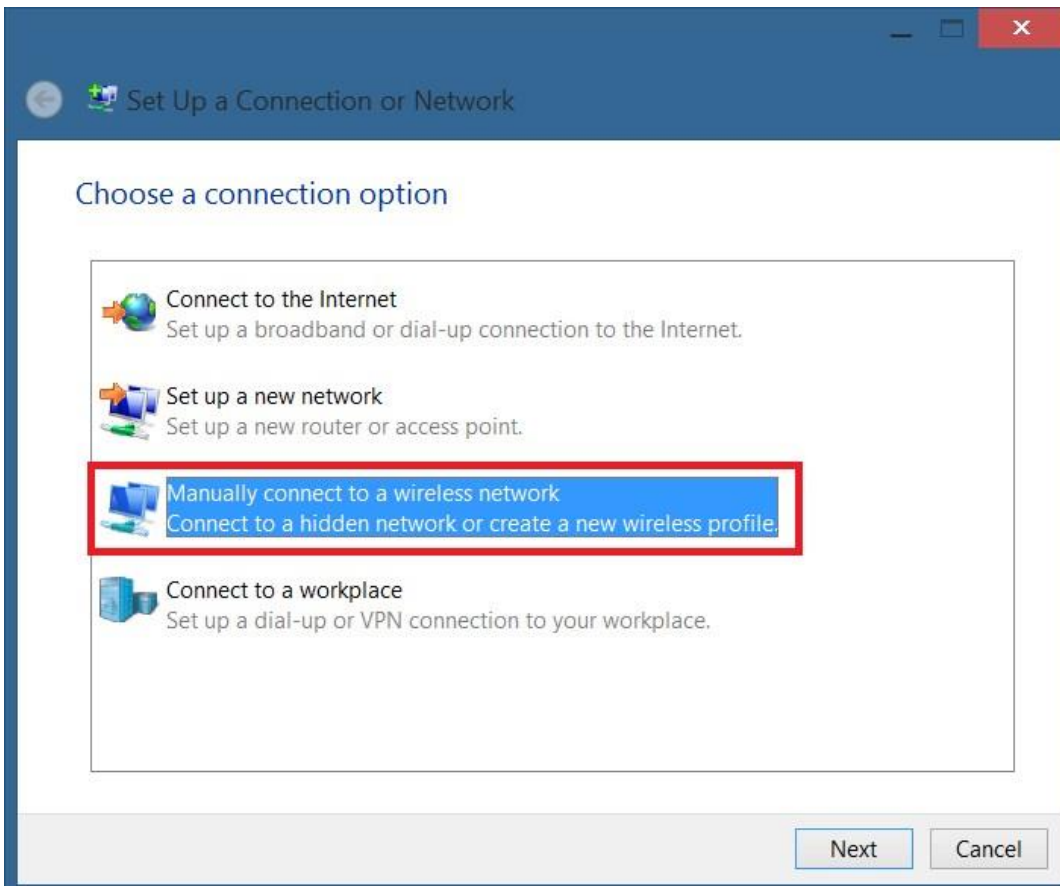
1. Press the Windows Key
2. Search “Network and Sharing”
3. Click “Network and Sharing Center”



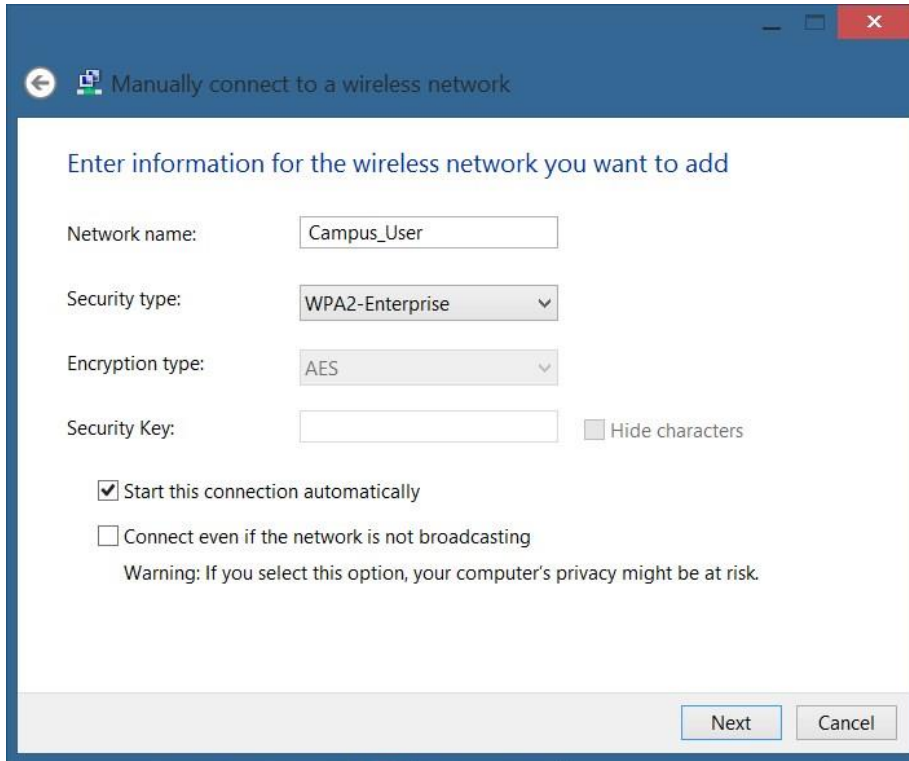
#### 4. Click “Set up a new connection or network”



#### 5. Choose “Manually connect to a wireless network”



6. Enter “Campus\_User” as the network name (or “Student”)
7. Set security type to “WPA2-Enterprise”
8. Click “Next”



Manually connect to a wireless network

Enter information for the wireless network you want to add

Network name:

Security type:

Encryption type:

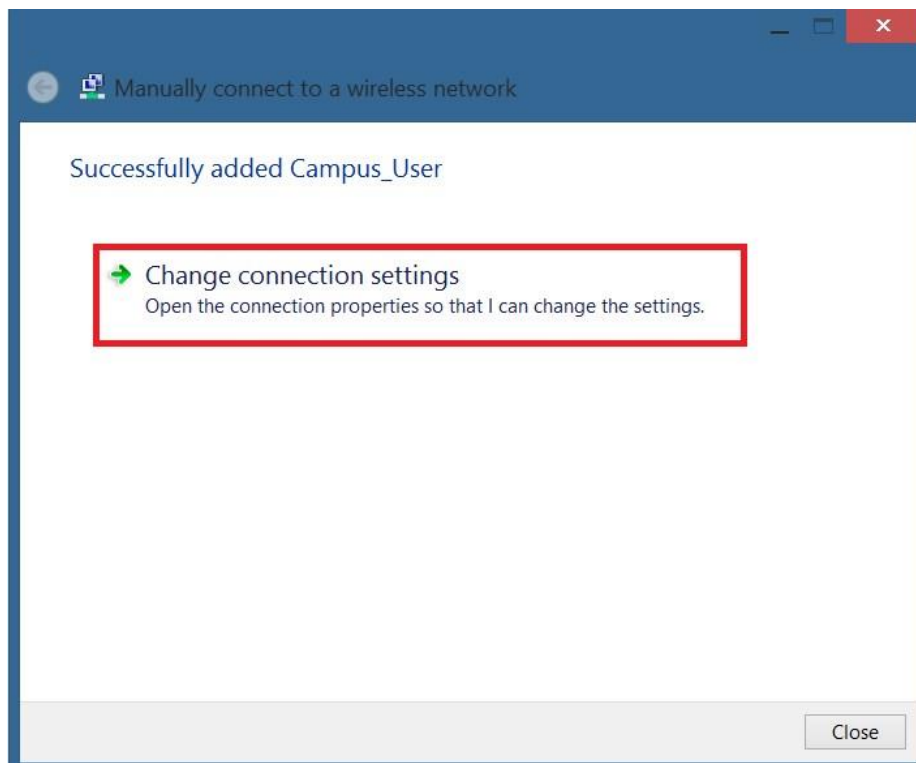
Security Key:   Hide characters

Start this connection automatically

Connect even if the network is not broadcasting

Warning: If you select this option, your computer's privacy might be at risk.

9. Click “Change connection settings”

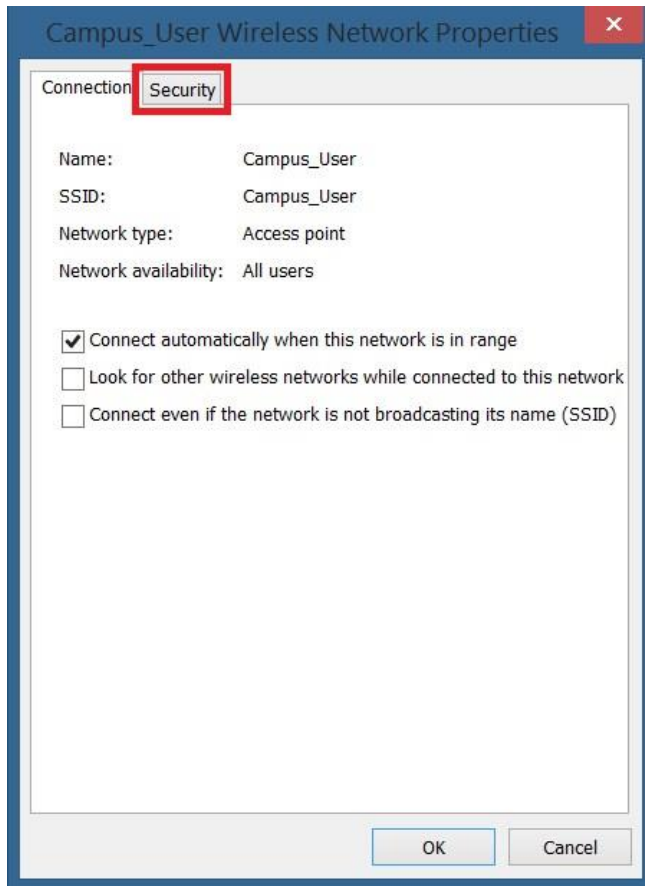


Manually connect to a wireless network

Successfully added Campus\_User

Open the connection properties so that I can change the settings.

## 10. Click the “Security” tab.

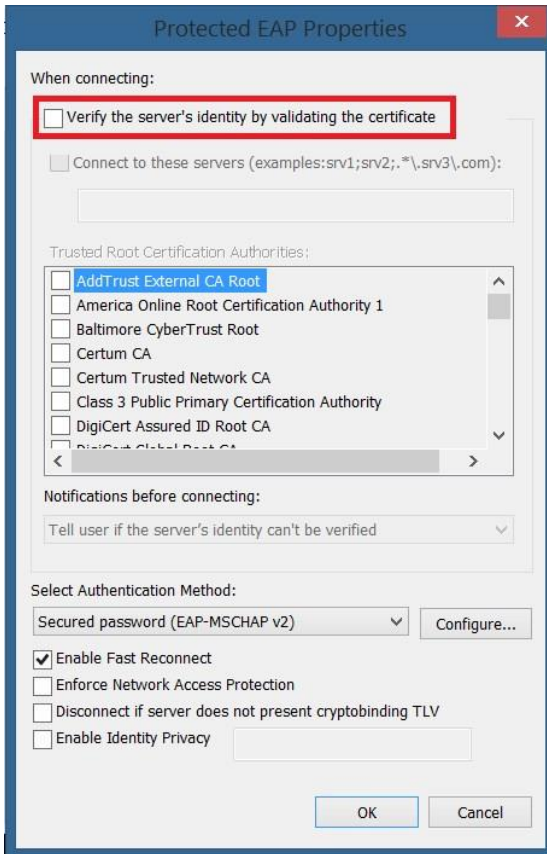


## 11. Click “Settings”



12. Uncheck “Verify the server’s identity”

13. Click “OK”

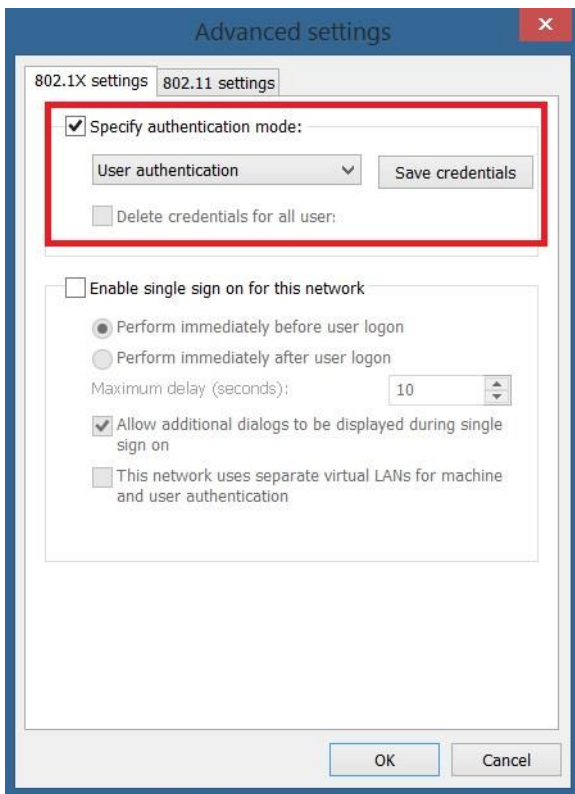


14. Click “Advanced Settings”

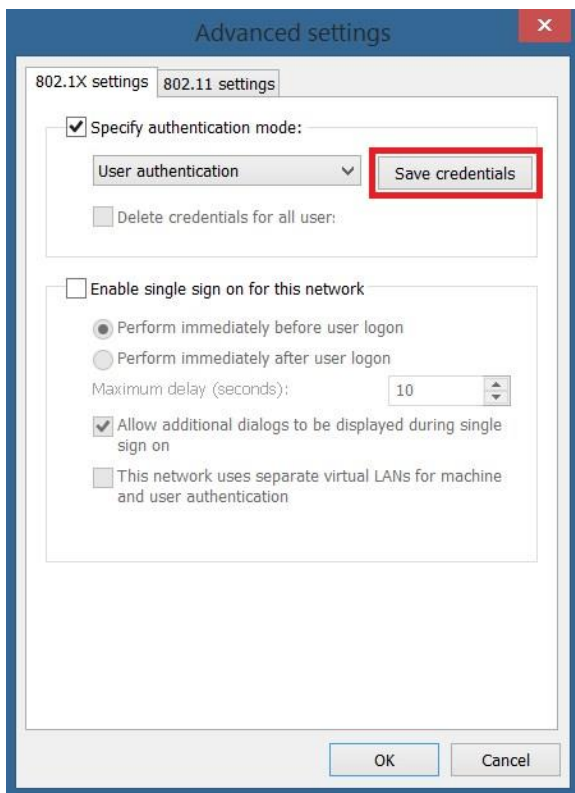




## 15. Check “Specify authentication mode” and set it to “User authentication”



## 16. Click “Save credentials”

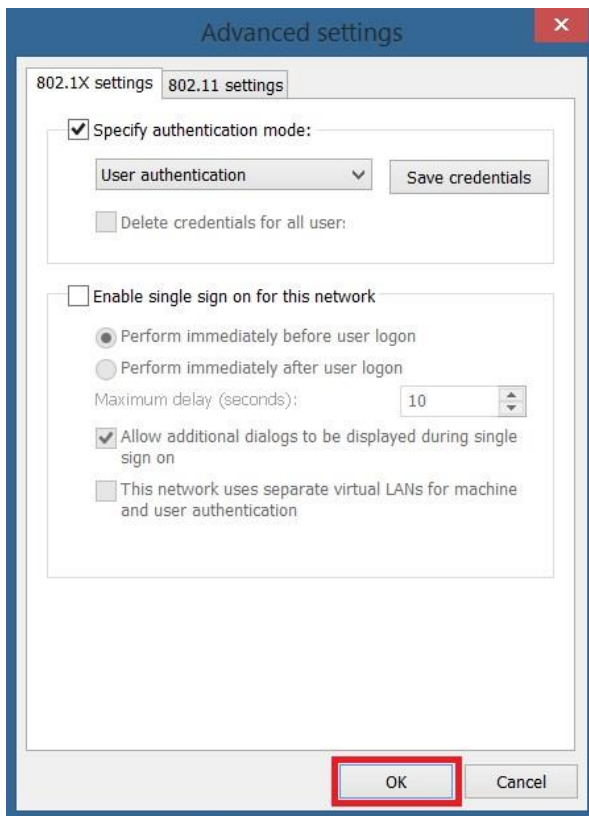


17. Enter your UCA followed by “@students”, and then enter your password. (Your UCA is the first part of your student email)

18. Click “OK”



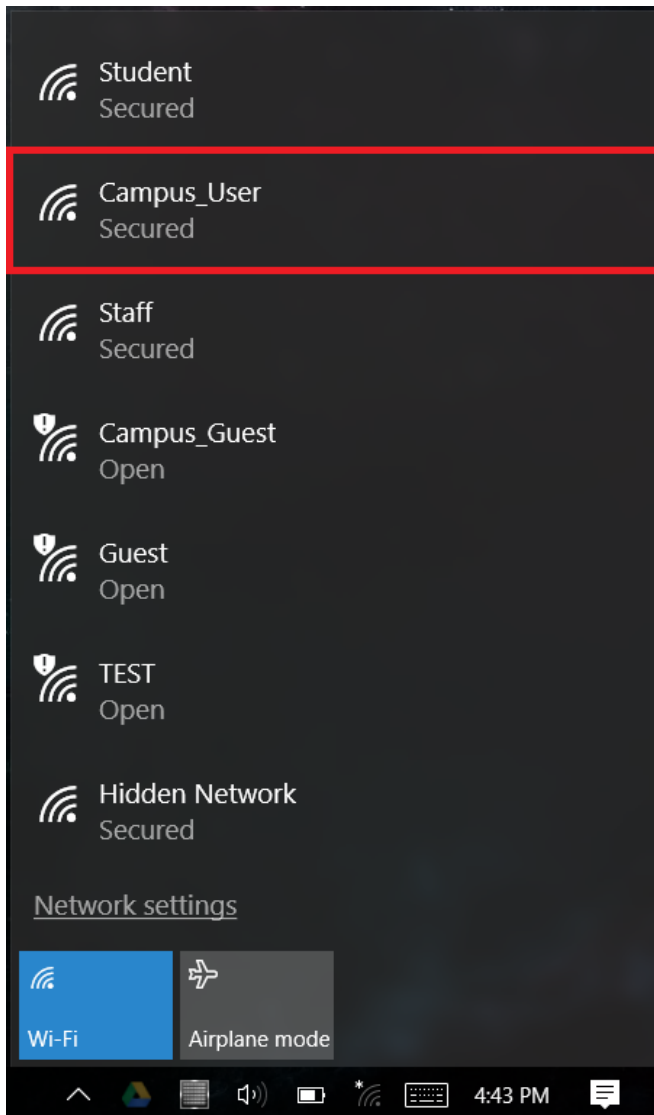
19. Click “OK” again



**20. View your available Wireless networks by clicking the Wireless icon in the taskbar.**



**21. Select “Campus\_User” (or Students) and click “Connect”**



**Your computer should now connect to the network. If these steps have failed, take your computer to the IT Commons located in the library, room 139, and we will assist you.**