

StudyMate Author

Installation Instructions and Screenshots

<https://www.fairmontstate.edu/it/tech-commons/supported-technology>

Click the Download StudyMate Author link.

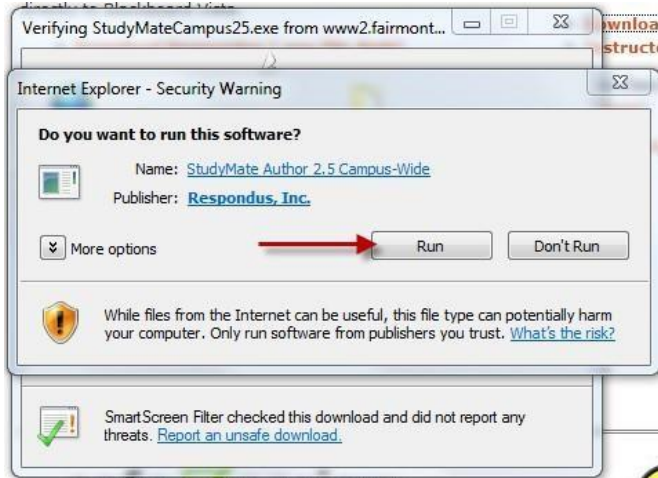
Enter UCA and Password, then click "OK".



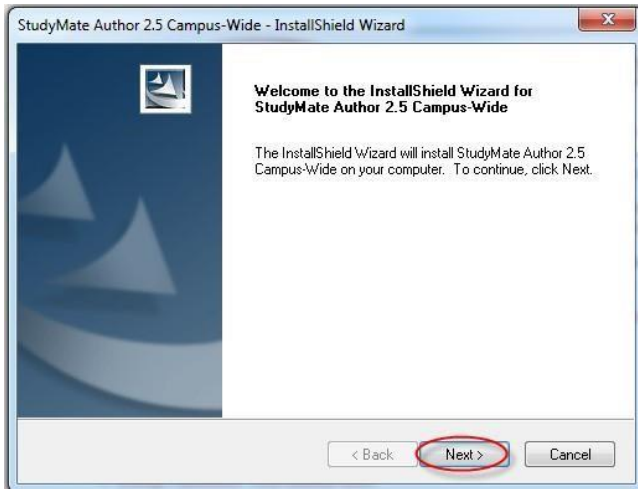
Click "Run" in the Dialogue Box.



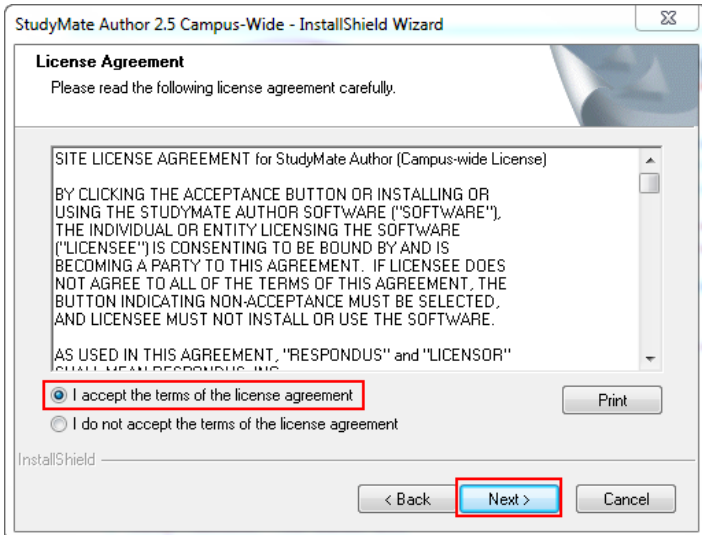
Click "Run" again.



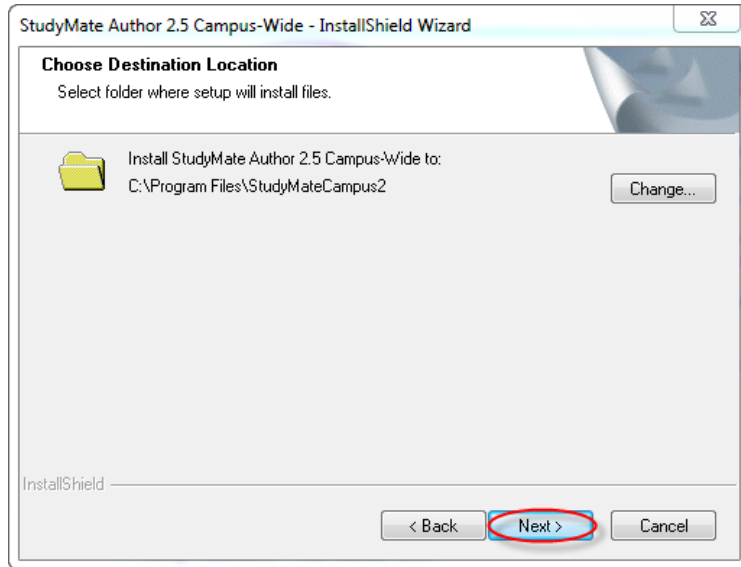
When prompted, click "Next".



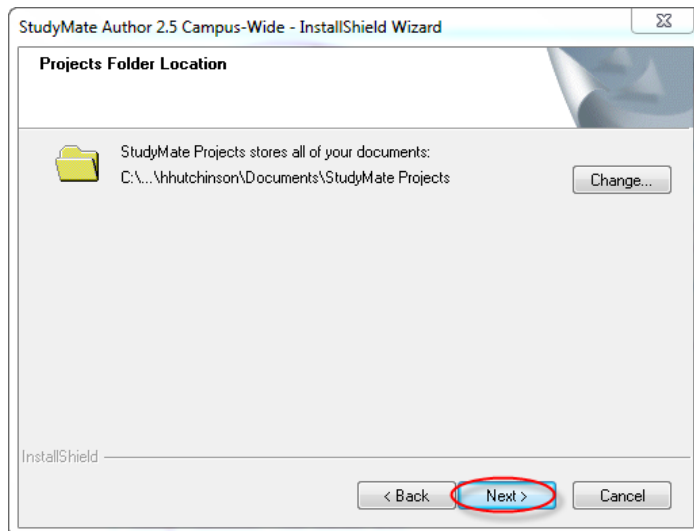
Click the radio button next to "I accept the terms of the license agreement", then click "Next".



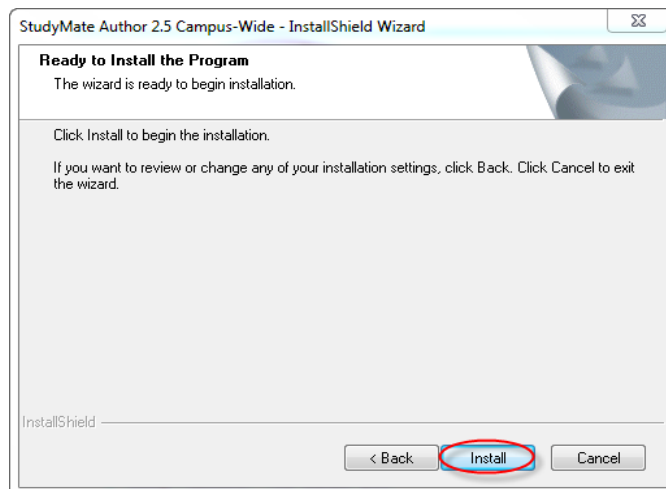
Click "Next".



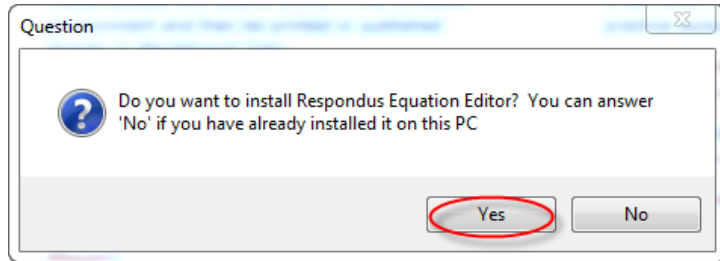
Click "Next" again.



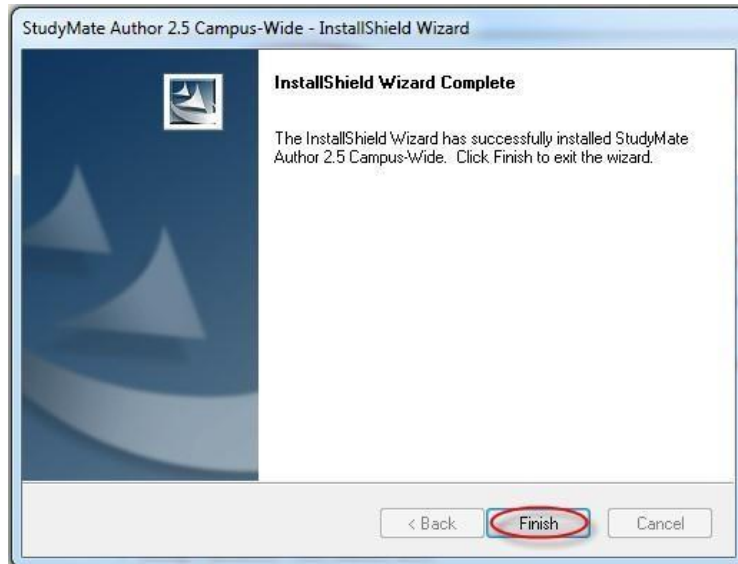
Click "Install".



Click "Yes" to install Respondus Equation Editor.



Click "Finish" to exit the Install Wizard.



Double-click the StudyMate Author icon on the Desktop to open StudyMate.



The Campus-wide License box will appear. You will have to manually enter the information.

Institution Name: Fairmont State University

Local Support Contact:

vmcvaney@fairmontstate.edu .

License Code: Y2007I415712583B6c607d673bd82ee3

The license code you enter is valid until July 31, 2020.

Campus-wide License ×

Your license to use Respondus has expired with the end of the academic year. As a courtesy your copy of Respondus will continue to function for a few days to allow time to obtain the new password from your local support person.

Institution Name - enter it exactly as shown on the password sheet or e-mail

Local Support Contact(s) - this can be viewed later by going to Help > About

Installation Password

To receive the Respondus e-Newsletter, click “Sign Up for e-Newsletter” Click “Close” if you do not wish to receive the e-Newsletter.

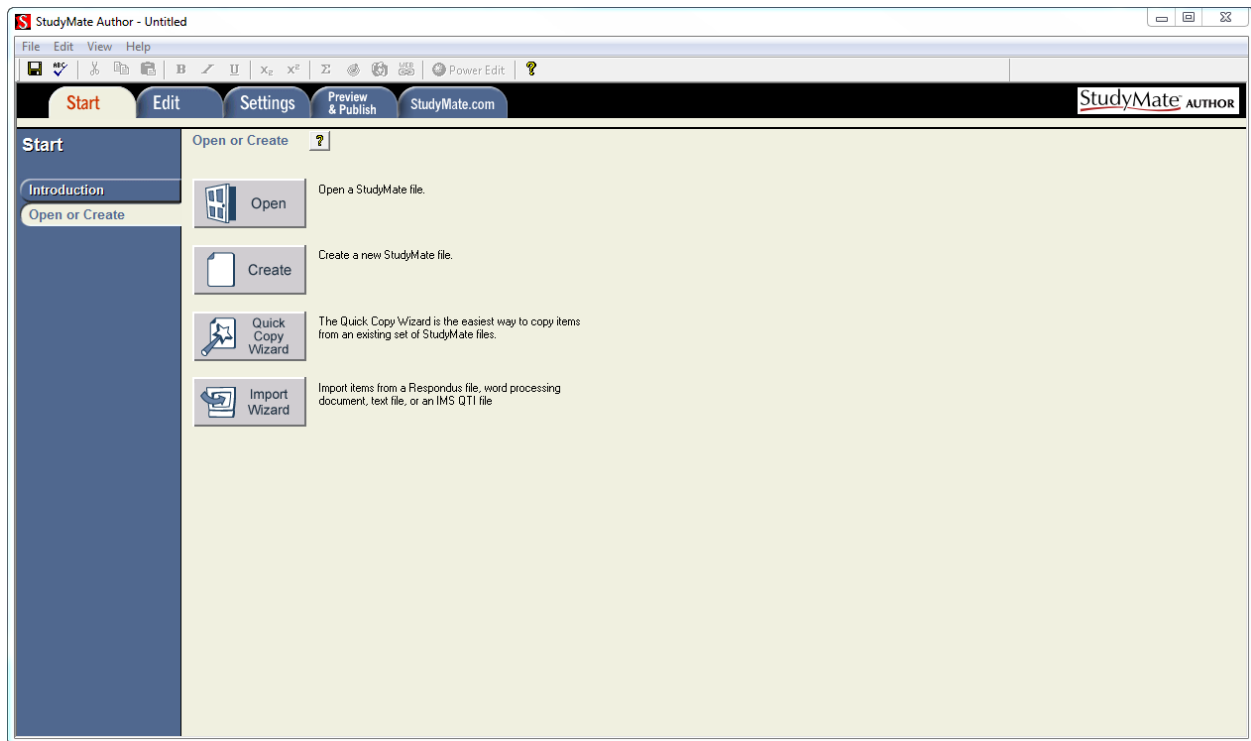
StudyMate Newsletter ×

The Respondus e-newsletter is published approximately 6 times yearly. It contains tips for using StudyMate, as well as information about updates and new features. Keep your software and skills current by signing up today!



If you choose to receive the e-Newsletter, you will be redirected to respondus.com in a new browser window. Click “Sign-up for e-Newsletter” to subscribe.

StudyMate is now installed and ready to use.



Online support is available at <http://www.respondus.com/support/>.

For additional assistance, contact Information Technology Commons:

Phone: 304-367-4810 option 3

E Mail: help@fairmontstate.edu

In Person: 1st Floor Rm 139 Library

Live Chat: Available during normal operating hours.