

# Installation Instructions and Screenshots

For the time being during transition you can find Current Supported Technology and accompanying documentation in the following areas.

<https://www.fairmontstate.edu/it/tech-commons/supported-technology>

OR

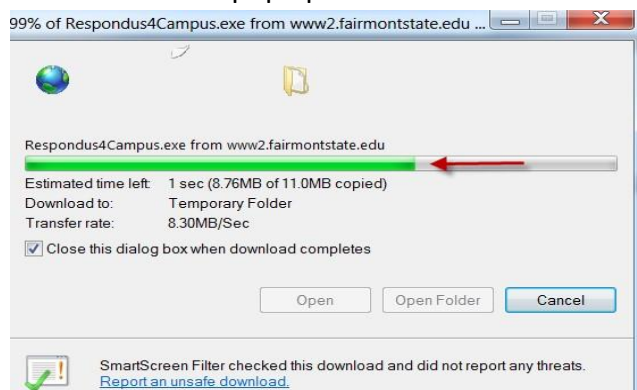
<https://guides.library.fairmontstate.edu/c.php?g=706671&p=5237810>

Click the Download Respondus link on either page.

Click “Run” in the Dialog Box



A Status Box will pop up.



When the installation is complete the Security Warning Dialog Box will appear.

Click “Run”

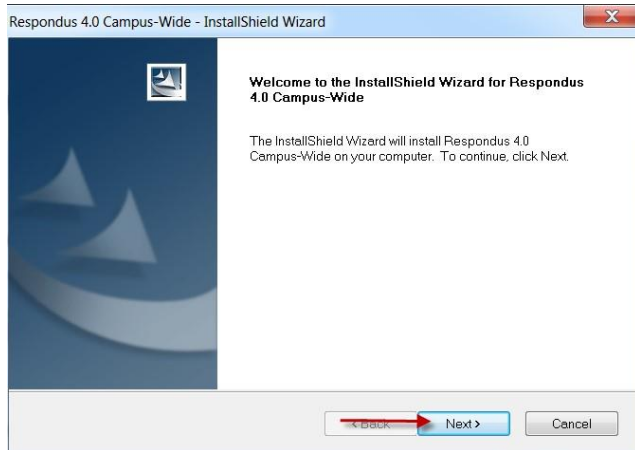


A Status Box will pop up.



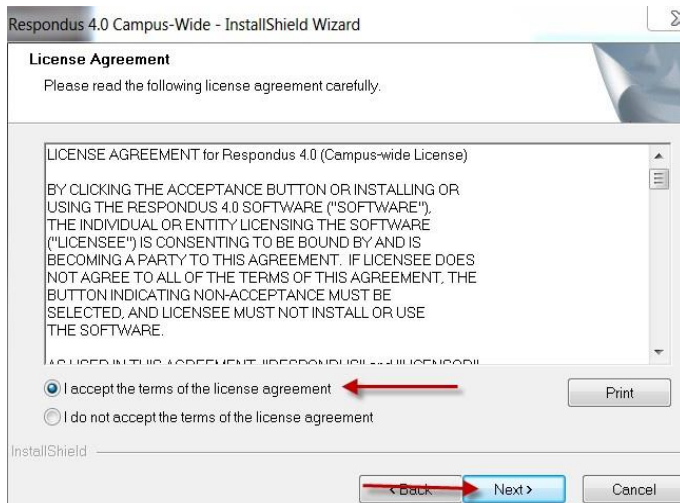
When the installation is complete the Install Wizard Dialog Box will appear.

Click "Next" to continue.

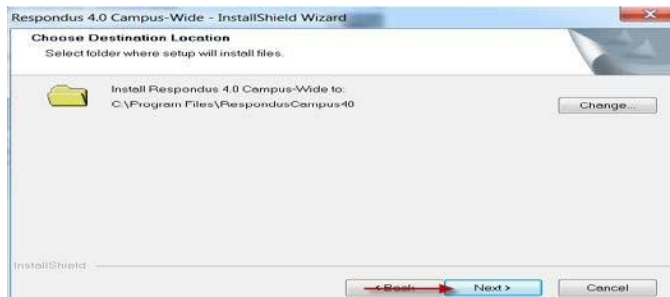


Click "I accept the terms of the license agreement" Click

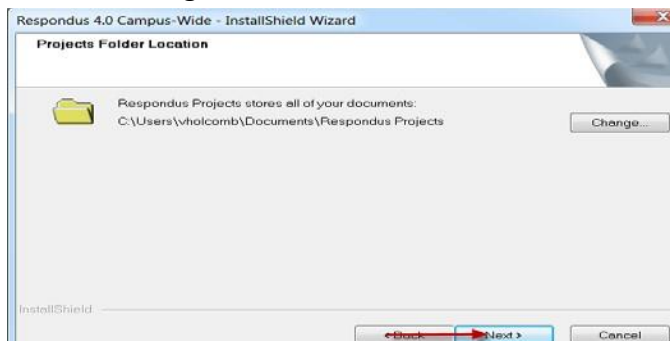
"Next" to continue.



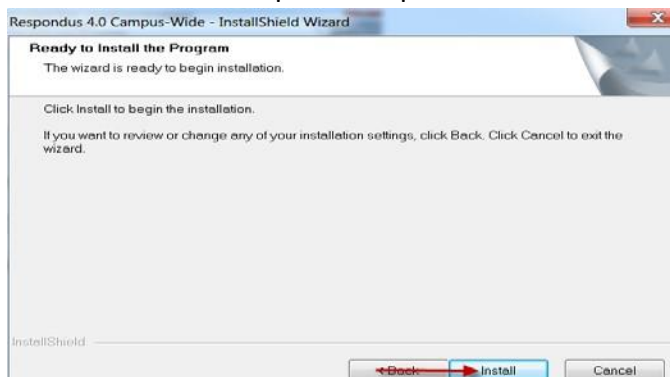
Click "Next" to continue the installation.



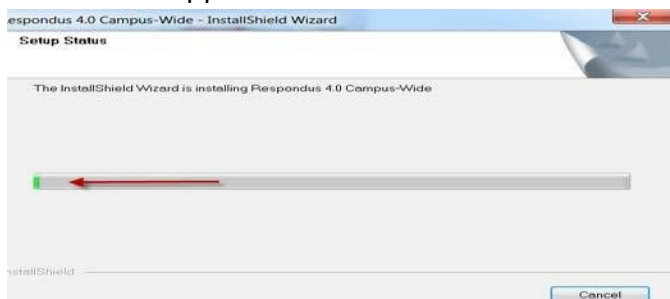
Click "Next" again.



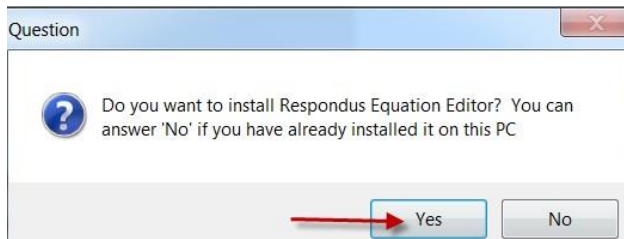
Click "Install" to complete the process.



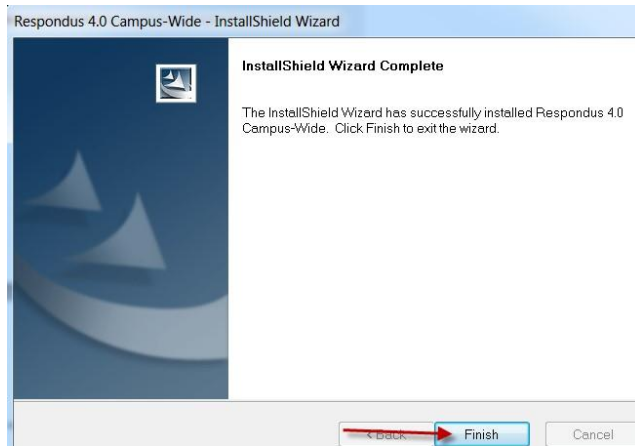
A Status will appear.



Click "Yes" to install Respondus Equation Editor.



Click "Finish" to exit the Install Wizard.



The Respondus Icon will appear on your Desktop.



Double Click the Respondus icon to open.

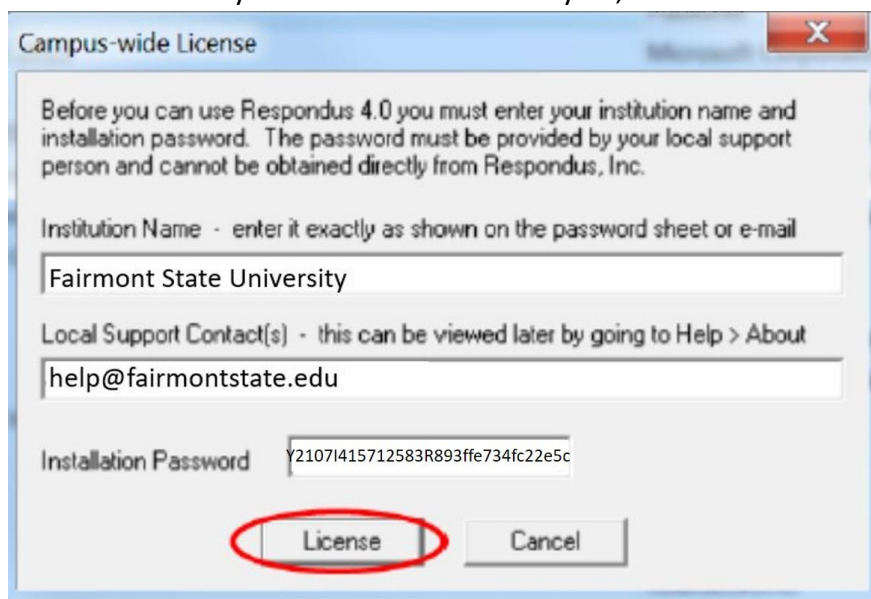
The Campus-wide License box will appear. You will have to manually enter the information.

Institution Name: Fairmont State University

Local Support Contact: help@fairmontstate.edu

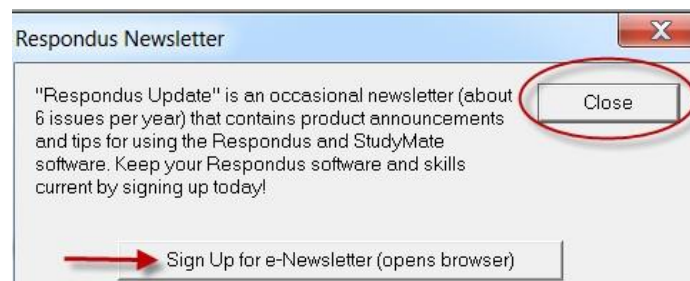
License Code: Y2107I415712583R893ffe734fc22e5c

The license code you enter is valid until July 31, 2021.



To receive the Respondus Newsletter Click "Sign Up for e-Newsletter" Click

"Close" if you do not wish to receive the e-Newsletter.



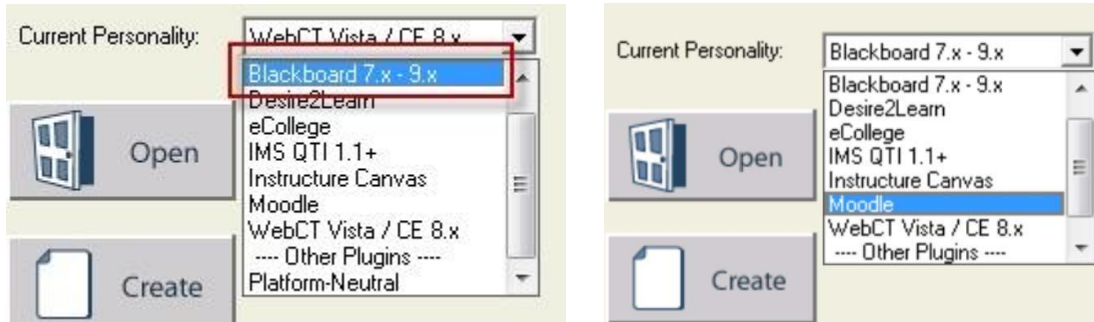
If you choose to receive the e-Newsletter, you will be redirected to respondus.com in a new browser window. Click "Sign up for e-Newsletter" to subscribe.

## "Respondus Update" e-Newsletter

*Respondus Update* is an occasional newsletter (approximately 6 issues per year) that contains product announcements and articles about Respondus, Respondus LockDown Browser, StudyMate, and the Respondus Test Bank Network.

[Sign up for e-Newsletter](#) ←  
[View archive of Respondus Update articles](#)

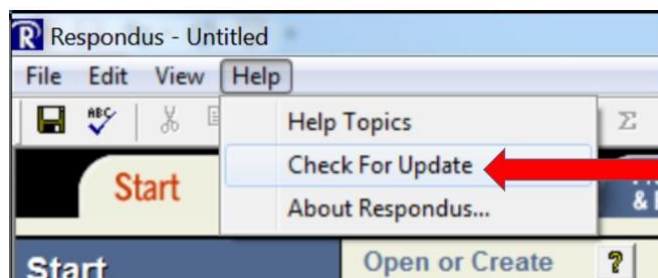
Choose the correct CMS Personality either Blackboard 7.x – 9.x. or Moodle



Respondus has been successfully installed and the Start menu now appears.

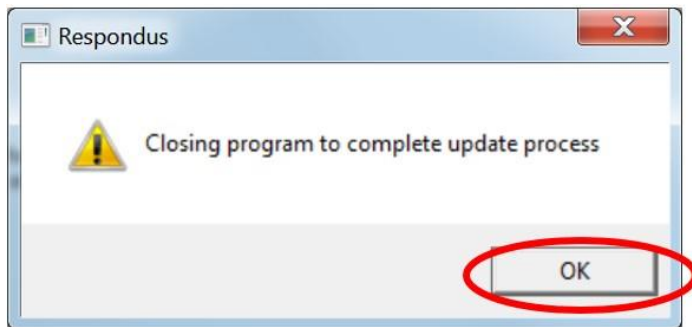


Before you can use Respondus you must check for and install updates.

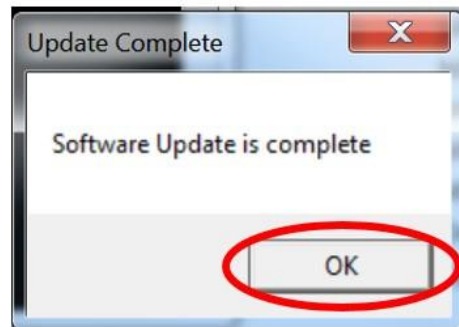




Click the Get Update button



Click OK button



Click OK button



Once again double click the Respondus Icon to open the program.

Online support is available at <http://www.respondus.com/support/>.

For additional assistance, contact the Information Technology Commons:

**Phone:** 304-367-4810 option 3

**E Mail:** [help@fairmontstate.edu](mailto:help@fairmontstate.edu)

**In Person:** 1st Floor Rm. 139 Library

**Live Chat:** Available during normal operating hours.