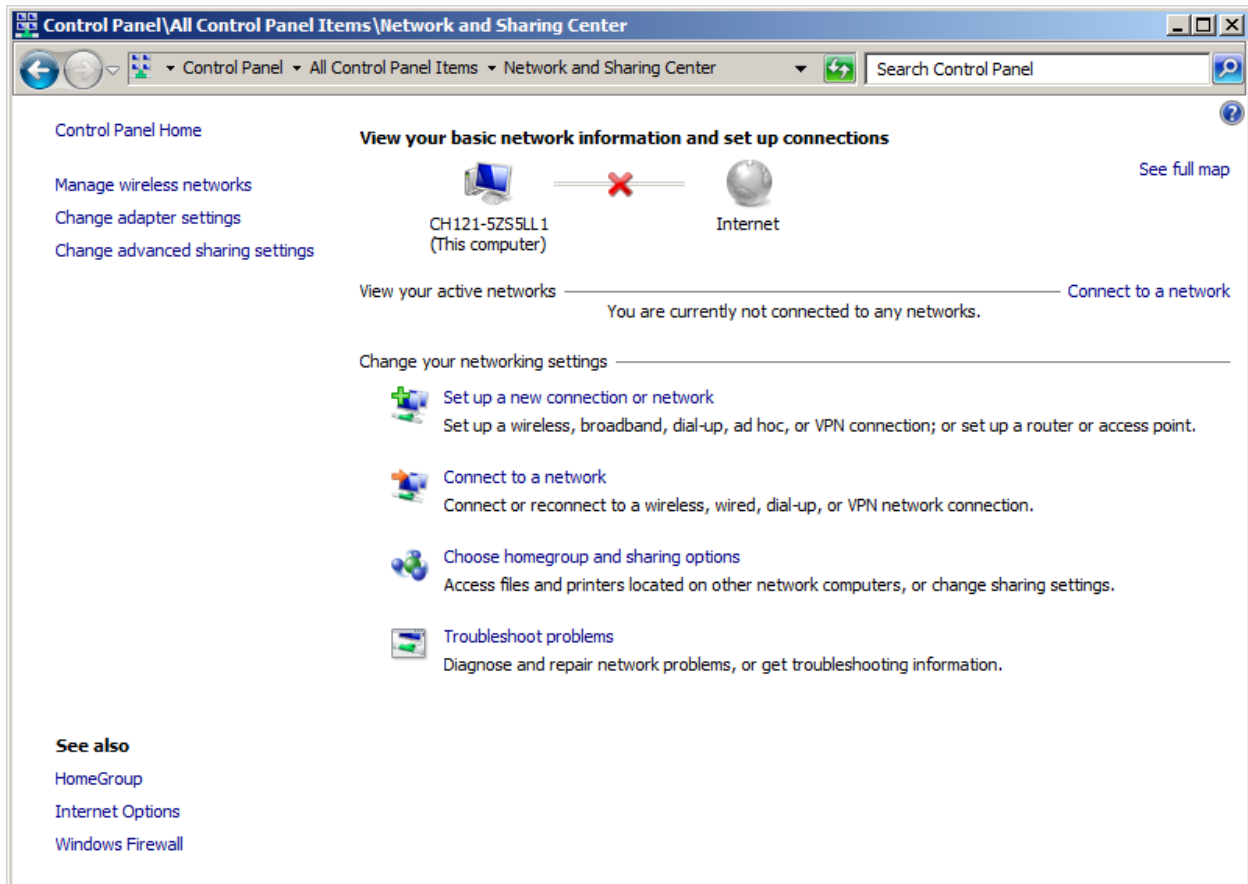


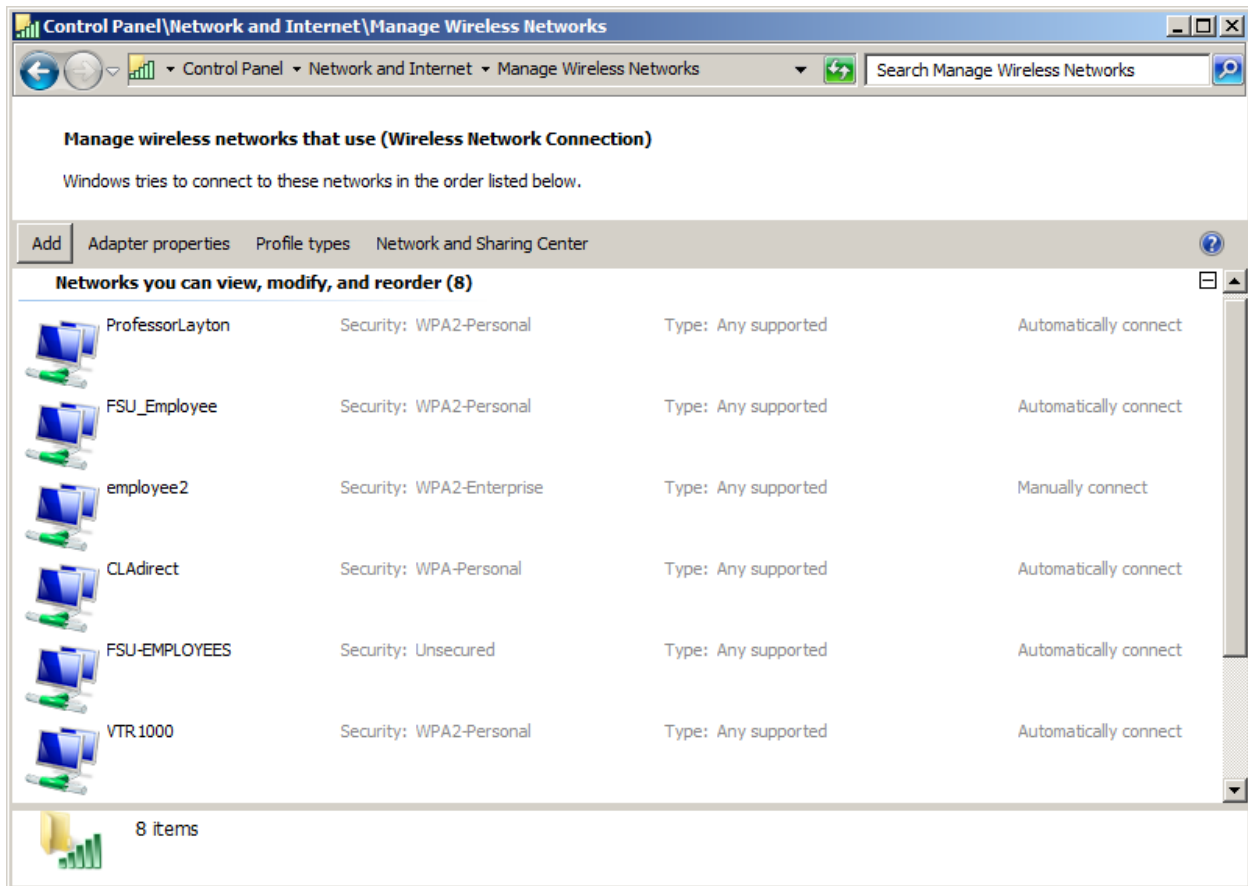
Windows 7 Wireless Configuration for 802.1x

Go to Start → Control Panel → Network and Internet

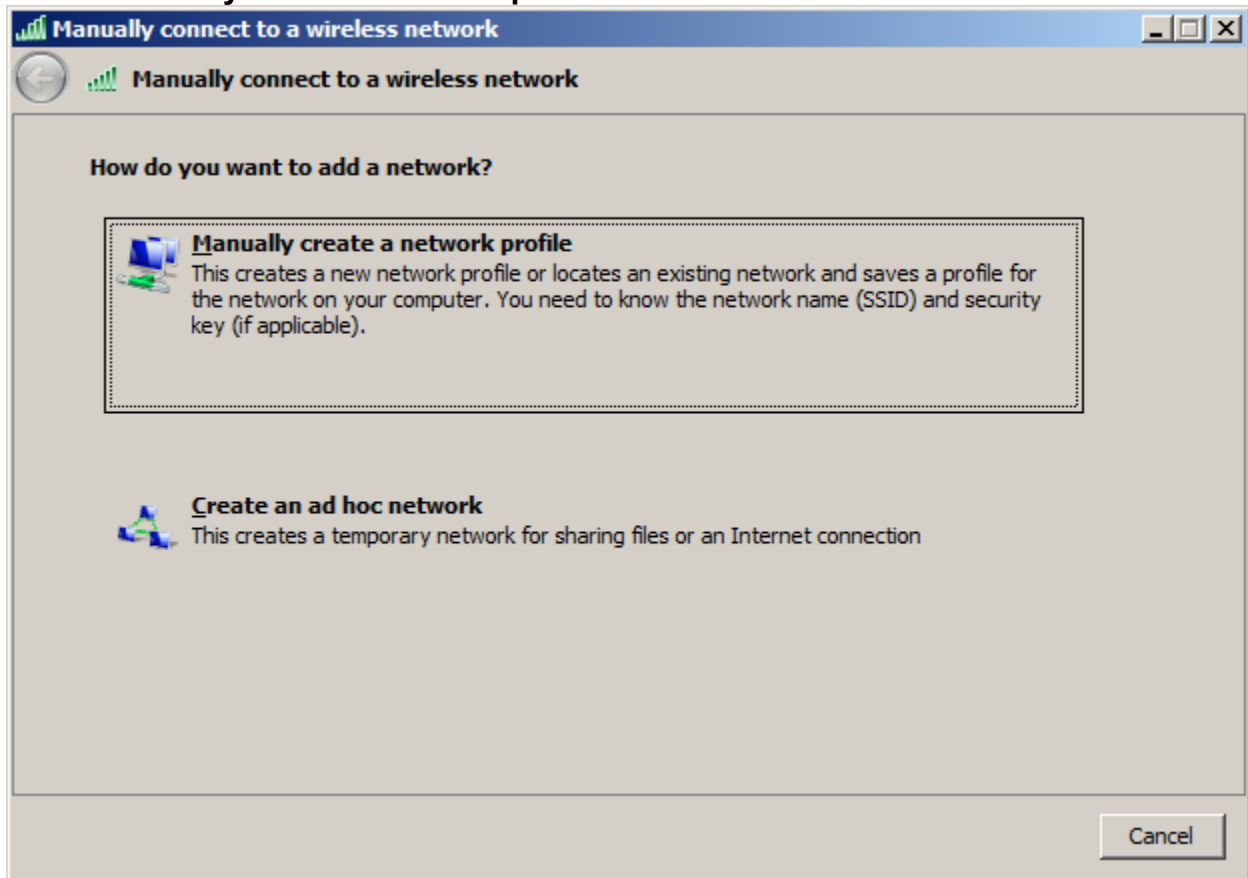
Click “Manage wireless networks” on the left



Click "Add"



Click "Manually create a network profile"



Enter the information exactly as pictured below

Manually connect to a wireless network

Enter information for the wireless network you want to add

Network name:

Security type:

Encryption type:

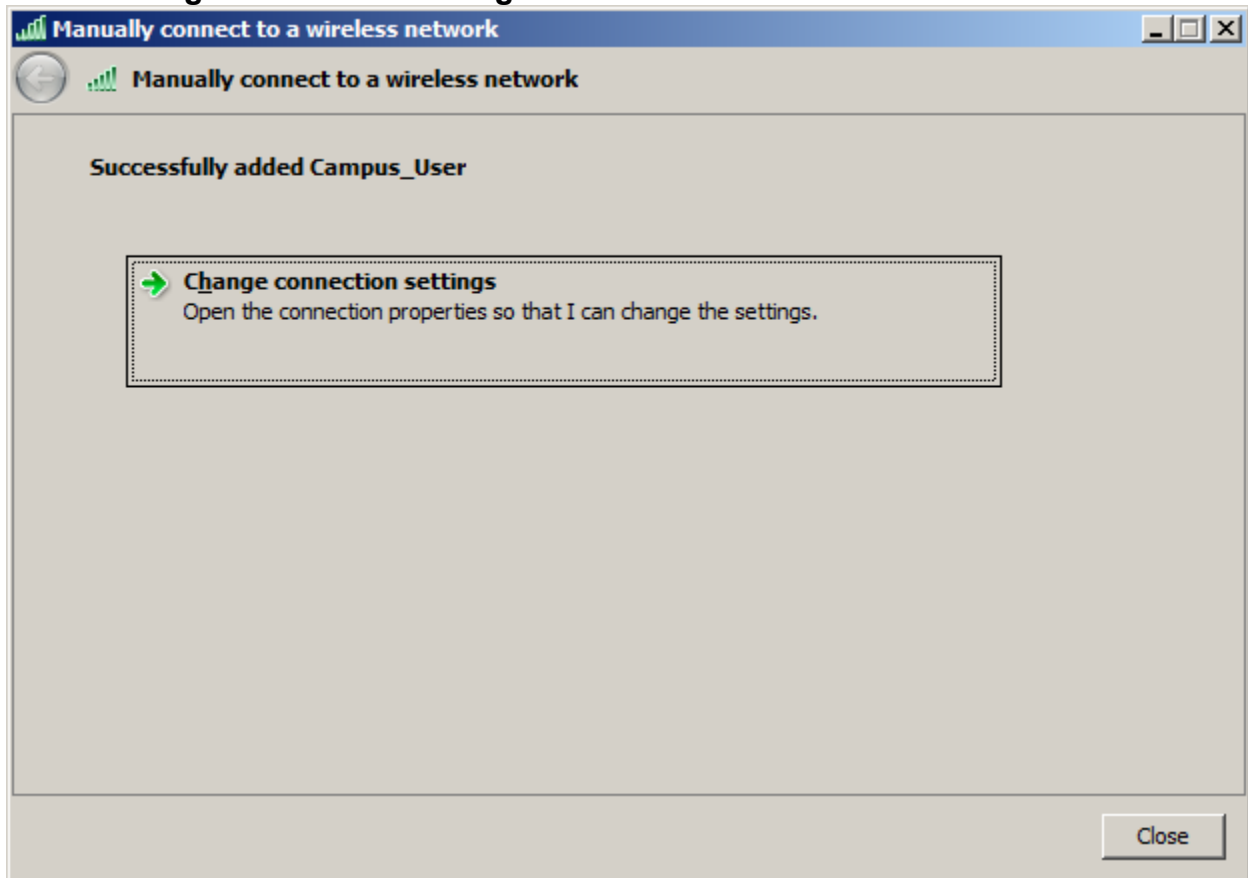
Security Key: Hide characters

Start this connection automatically

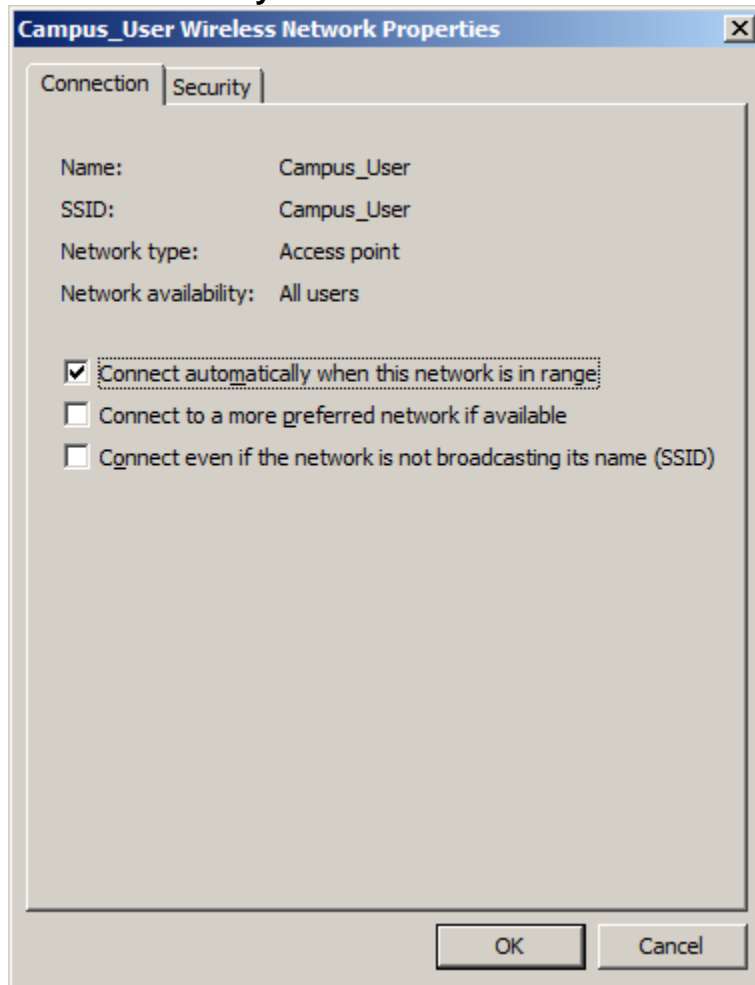
Connect even if the network is not broadcasting

Warning: If you select this option, your computer's privacy might be at risk.

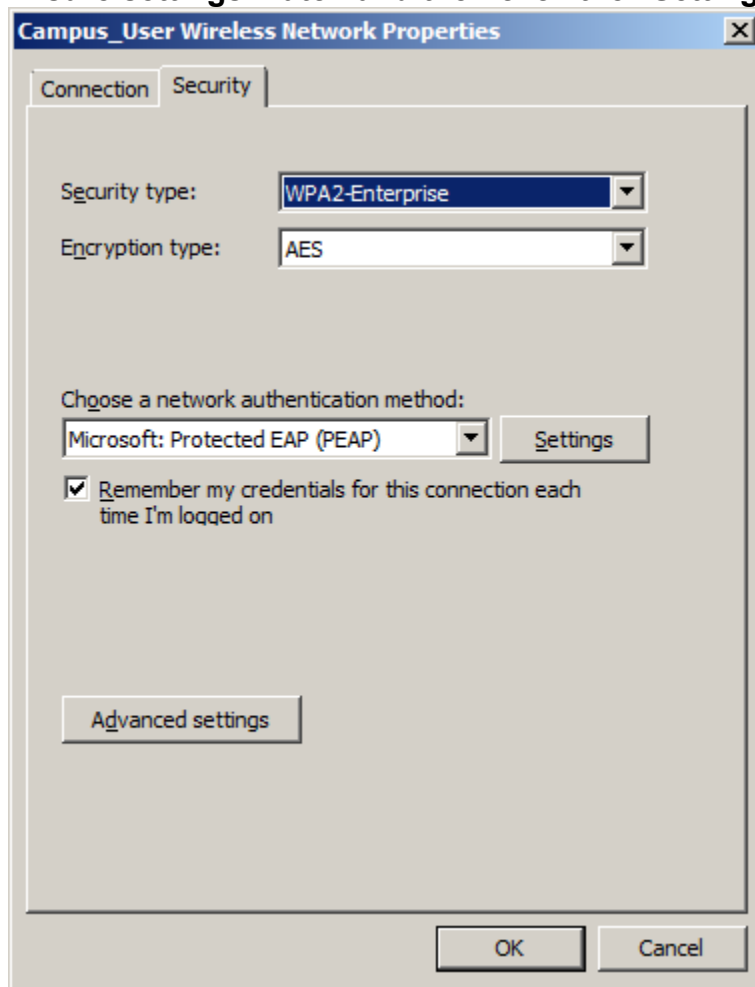
Click "Change connection settings"



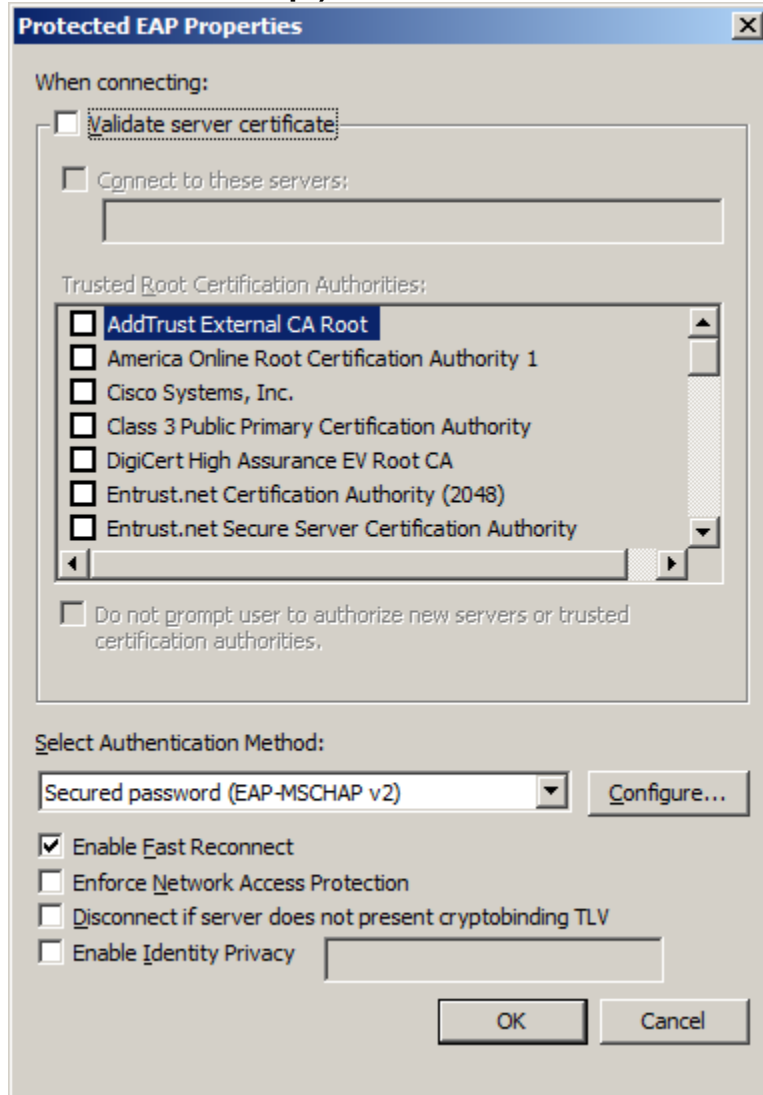
Click the Security tab



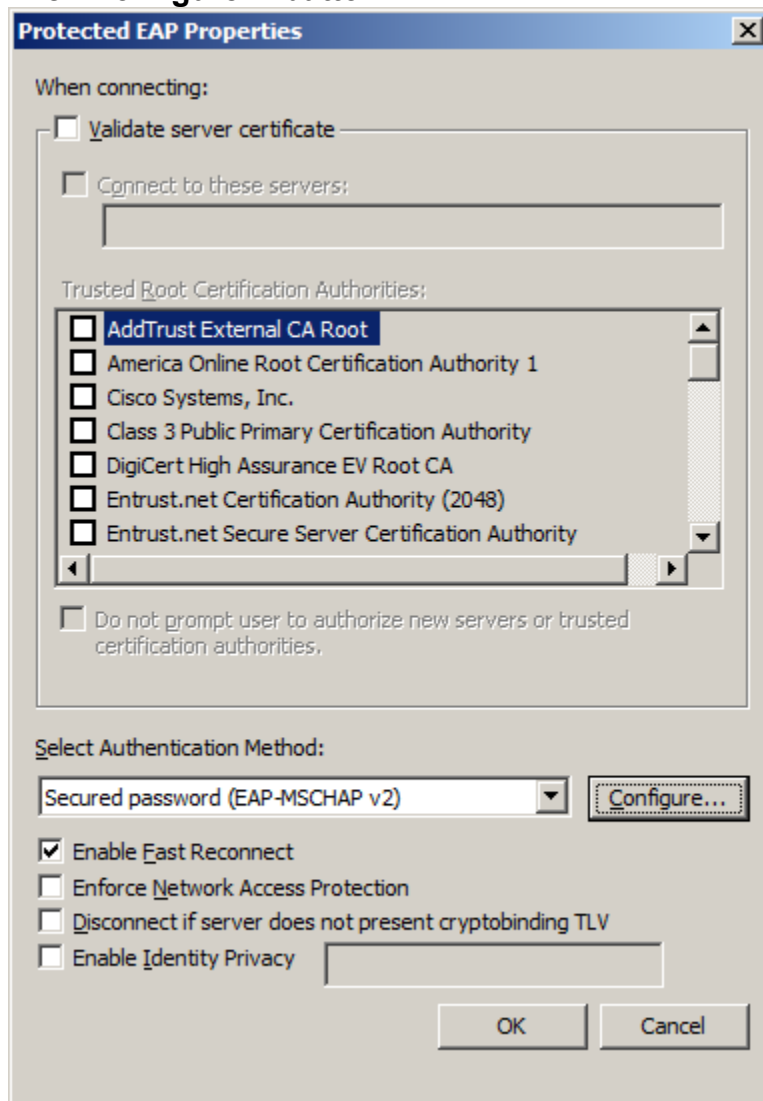
Ensure settings match and then click the “Settings...” button



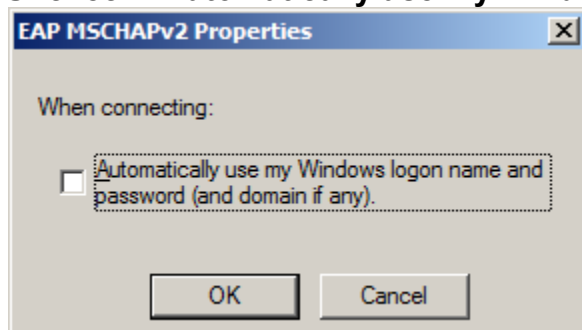
Uncheck Validate server certificate (our certificate is wireless.fairmontstate.edu and is safe to accept)



Click Configure... button

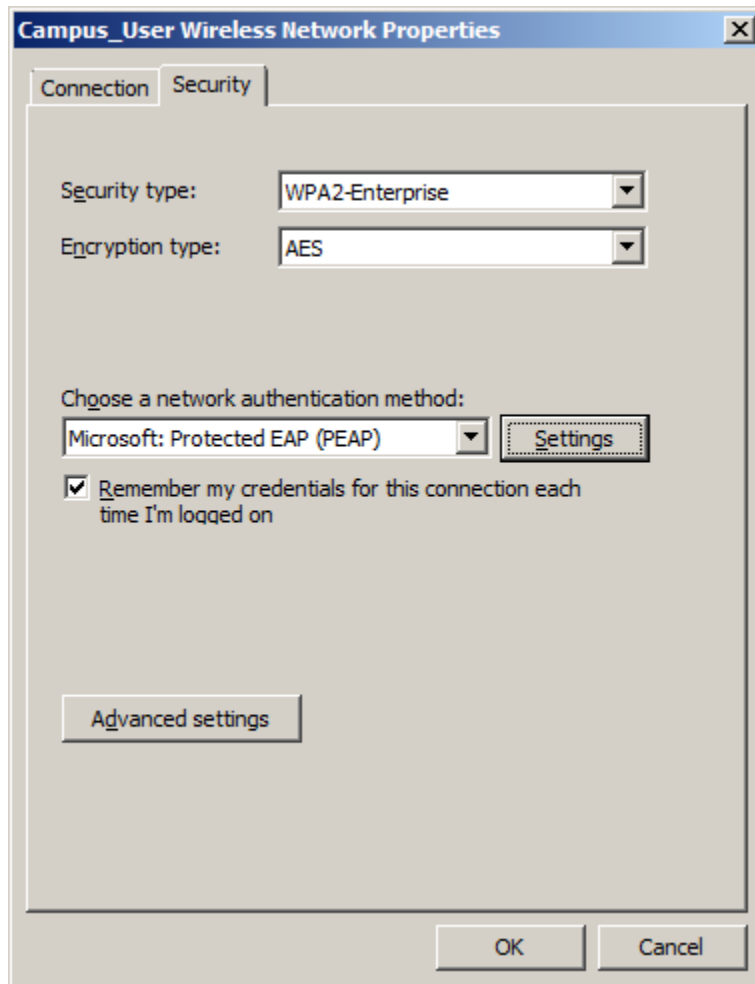


Uncheck "Automatically use my Windows logon name and password"

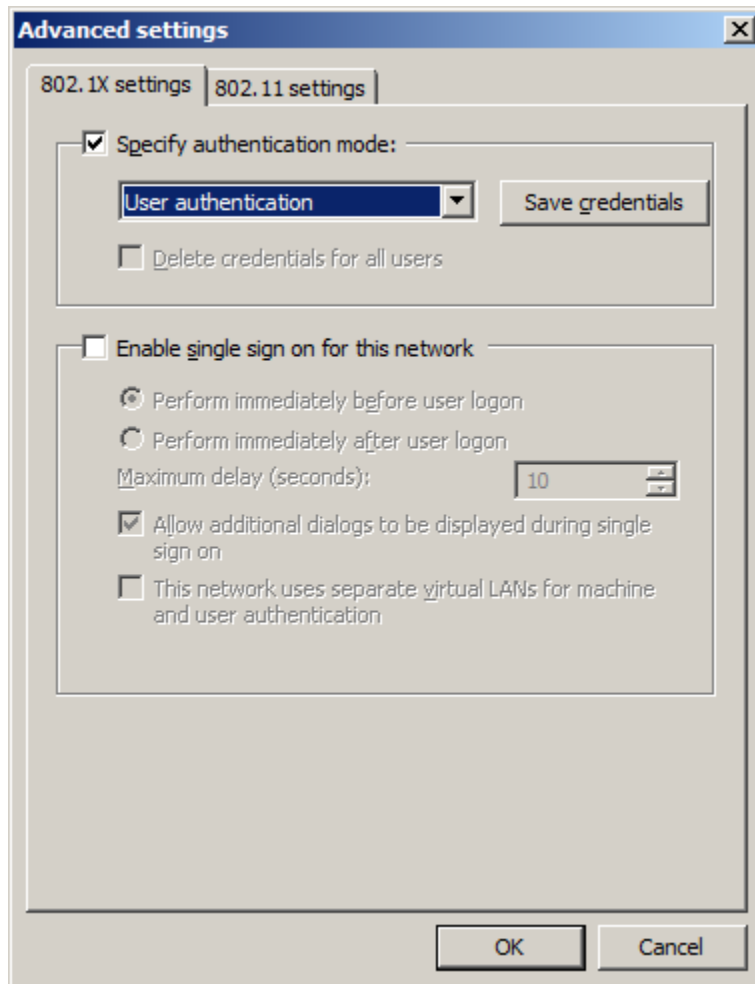


Click OK

Click the “Advanced settings”

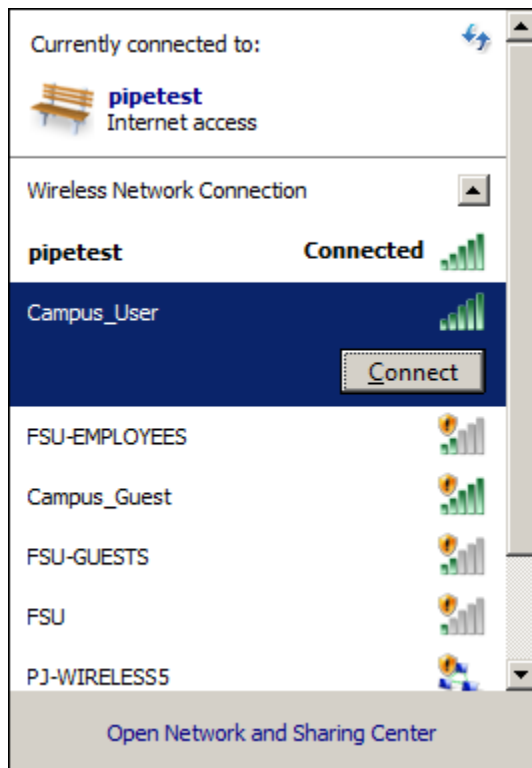


Check “Specify authentication mode:” and select “User Authentication



Click OK → OK → Close

View available wireless networks and connect to Campus_User



Enter you UCA for the User name and your password

NOTE: Students MUST enter username as: UCA@students

