

# WE CAN HELP YOU!

The AIMSS program at Fairmont State University provides individualized planning to develop strategies and support for each student accepted into the program.

Students accepted into the AIMSS program must meet criteria for admission.

Students and program staff work together to identify and develop individualized support based upon strengths, abilities, and the needs of each student. AIMSS staff provide academic, social, and daily living support designed to help students complete a degree program. Individualized plans are developed to help students learn skills for becoming independent members of the college community.



## AIMSS

### Autism Individualized Mentoring and Support Services

#### FACULTY LIASONS

**Ms. Cicely Jones**, Director  
cicely.jones@fairmontstate.edu  
(304) 333-3687  
Education Building, Room 341

**Dr. Julie Reneau**, Executive Director  
jreneau@fairmontstate.edu  
(304) 367-4507  
Education Building, Room 355

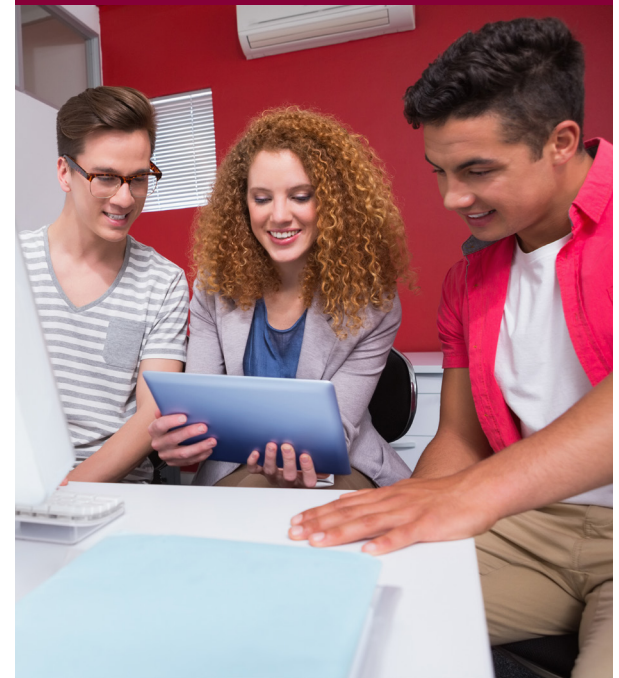
#### AIMSS OFFICE

Education Building, Room 340

Fairmont State University is an Equal Opportunity,  
Affirmative Action institution.



# ARE YOU ON THE AUTISM SPECTRUM AND WANT TO SUCCEED IN COLLEGE?





**FAIRMONT STATE  
UNIVERSITY™**  
AIMSS

## Autism Individualized Mentoring and Support Services



## PREPARING FOR COLLEGE AND BEYOND

### ACADEMIC SUPPORT

- Build self-advocacy skills
- Determine and request reasonable accommodations
- Communicate effectively with professors and classmates
- Create an individualized plan for homework, studying, and test-taking
- Use a study area exclusively for AIMSS students
- Receive course selection recommendations
- Mentor individual students

### SOCIAL SKILLS SUPPORT

- Get assistance with involvement in on-campus groups and organizations
- Participate in weekly Discovery Groups that work on learning about and building social skills
- Form bonds with AIMSS students and staff through activities and meals together
- Participate in individual and small group mentoring

### INDEPENDENT LIVING SKILLS SUPPORT

- Gain independence while transitioning to college and adulthood
- Learn and practice effective skills to use in dorms
- Participate in Foundations Groups that teach independent living skills
- Advise individual and small groups on common skills such as housing responsibilities, nutrition and exercise, proper sleep, and financial planning



**Helping students at Fairmont State succeed in college through academic, social, and independent living support.**

## ELIGIBILITY AND SELECTION

### ELIGIBILITY

- A documented diagnosis of high-functioning autism or Asperger's syndrome (Contact us for documentation requirements)
- Must meet admissions requirements and be admitted to FSU on student's own merit

### OVERVIEW OF APPLICATION PROCESS

- Complete and submit application (Contact us for more details and due date)
- Complete an in-person interview with student and parents
- Provide documentation and records regarding treatment and academics

### FURTHER STEPS IF SELECTED

- Create an academic profile in-person with student, parents, and staff over the summer
- Schedule weekly meeting times for the upcoming semester based on class schedule and student/staff availability



**FAIRMONT STATE  
UNIVERSITY™**  
AIMSS