

Program Review

Fairmont State University

Theatre Arts

School of Fine Arts

January, 2010

Program Catalog Description:

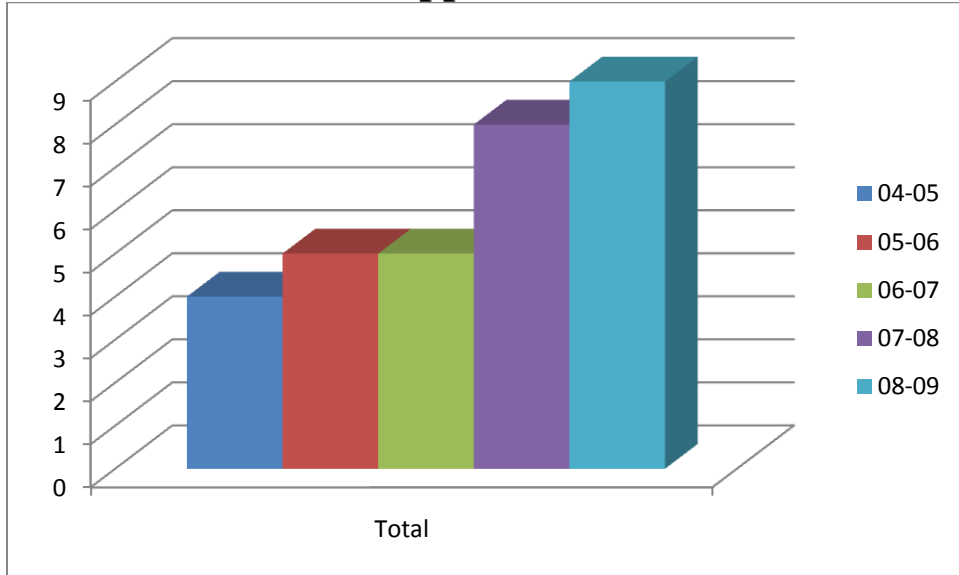
The Department of Communication and Theatre Arts has designed a program to provide students with a variety of choices for developing their knowledge and skills through study and performance. By building a base of performance experience through classroom exercises, public performances, and competition, students can develop communication expertise which will prepare them to meet the challenges of the future. In order that a student in any of these programs may be recommended for graduation by the Communication and Theatre Arts faculty, s/he must perform in one or more of the department faculty-directed/sponsored public performance areas listed below. A student must reach a satisfactory level of proficiency in at least one of the performance areas. Each student's performance and level of proficiency will be periodically appraised by the faculty.

Theatre: acting, technical crews, directing, designing, public relations, house management, business management, etc., with Masquers, Town & Gown, or studio theatre presentations.

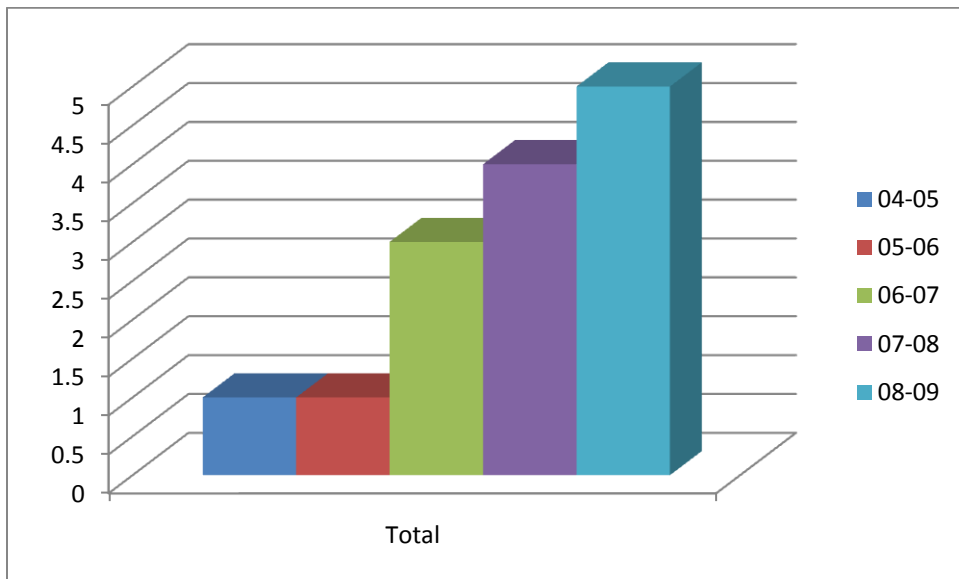
Viability (§ 4.1.3.1)

Enrollments

Applicants



Graduates



Program Courses

| Row Labels | 04-05 | 05-06 | 06-07 | 07-08 | 08-09 |
|--|------------|------------|------------|------------|------------|
| THEA | 746 | 767 | 712 | 738 | 923 |
| 1110 | 20 | 19 | 24 | 24 | 18 |
| Introduction to Theatre | 20 | 19 | 24 | 24 | 18 |
| 1114 | 13 | 9 | 12 | 13 | 19 |
| Body Training/Stage Movement | 13 | 9 | 12 | 13 | 19 |
| 1120 | 383 | 475 | 424 | 497 | 552 |
| Theatre Appreciation | 312 | 368 | 284 | 289 | 383 |
| Theatre Appreciation-Online | 71 | 107 | 140 | 208 | 169 |
| 1140 | 14 | 18 | 17 | 14 | 26 |
| Theatrical Production | 14 | 18 | 17 | 14 | 26 |
| 1148 | 49 | 49 | 28 | 20 | 35 |
| Theatre Workshop I | 49 | 49 | 28 | 20 | 35 |
| 1151 | 11 | 12 | 7 | 13 | 17 |
| Text Analysis | 11 | 12 | 7 | 13 | 17 |
| 1160 | 7 | 8 | 3 | | 4 |
| Practicum: Costuming I | 7 | 8 | 3 | | 4 |
| 1162 | 2 | | 2 | | 1 |
| Practicum: Lighting I | 2 | | 2 | | 1 |
| 1164 | 1 | 1 | 2 | | |
| Practicum: Properties I | 1 | 1 | 2 | | |
| 1166 | | 2 | 2 | 2 | |
| Practicum: Scenic I | | 2 | 2 | 2 | |
| 1168 | 1 | 2 | 2 | 1 | 1 |
| Practicum: Sound I | 1 | 2 | 2 | 1 | 1 |
| 1199 | 36 | 38 | 39 | 3 | 26 |
| Special Topics Dance | | | 6 | | 22 |
| Specil Topics Theatre | 36 | 38 | 23 | 3 | 4 |
| ST: in Theater - Dance | | | 10 | | |
| 2212 | 14 | | 17 | 9 | 10 |
| Theatrical Makeup | 14 | | 17 | 9 | 10 |
| 2220 | 13 | | 23 | 15 | 18 |
| Oral Interpretation | 13 | | 23 | 15 | 18 |
| 2228 | 8 | 2 | | 3 | 2 |
| Oral Interpretation Practicum I | 8 | 2 | | 3 | 2 |
| 2230 | 16 | 9 | 8 | 13 | 14 |
| Acting | 16 | 9 | 8 | 13 | 14 |
| 2238 | 16 | 17 | 12 | 16 | 30 |
| Acting Workshop I | 16 | 17 | 12 | 16 | 30 |
| 2244 | 8 | 13 | 10 | 7 | 10 |

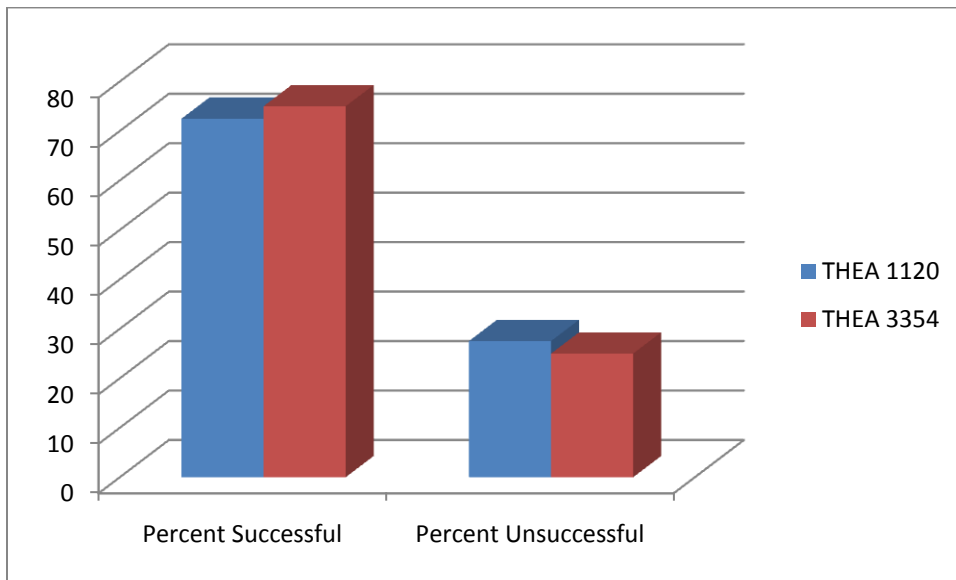
| | | | | | |
|-----------------------------|----|----|----|----|----|
| Intro to Theatrical Design | 8 | 13 | 10 | 7 | 10 |
| 2251 | | 8 | | | |
| Playwriting-Online | | 8 | | | |
| 2299 | | | 14 | | |
| New York Trip | | | 10 | | |
| Shakespearean Road Trip | | | 4 | | |
| 3305 | | 11 | | 8 | |
| Voice for the Stage | | 11 | | 8 | |
| 3314 | 2 | | 10 | | |
| Adv Theatrical Makeup | 2 | | 10 | | |
| 3326 | | | | | 14 |
| Performance Studies | | | | | 14 |
| 3330 | | | | | 9 |
| Advanced Acting | | | | | 9 |
| 3336 | 12 | 5 | 5 | 11 | 14 |
| Directing | 12 | 5 | 5 | 11 | 14 |
| 3340 | 8 | | 5 | | 20 |
| Theatre History I | | | 5 | | |
| Theatre History I | 8 | | | | 20 |
| 3341 | 8 | | 6 | | 15 |
| Theatre History II | 8 | | 6 | | 15 |
| 3344 | | 3 | | | |
| Adv Theatrical Design | | 3 | | | |
| 3346 | | 5 | | 3 | |
| Creative Puppetry | | 5 | | 3 | |
| 3348 | 12 | 7 | 3 | 7 | 9 |
| Theatre Workshop II | 12 | 7 | 3 | 7 | 9 |
| 3350 | 2 | 12 | | 8 | |
| Children's Drama | 2 | 12 | | 8 | |
| 3352 | 2 | | 7 | | 9 |
| Creative Drama | 2 | | 7 | | 9 |
| 3354 | 5 | 2 | 2 | 1 | |
| Theatre Education Practicum | 2 | 2 | 2 | 1 | |
| Theatre Education Program | 3 | | | | |
| 3356 | | | | 1 | |
| Summer Theatre: Rehear/Perf | | | | 1 | |
| 3360 | 5 | 3 | | 1 | |
| Practicum: Costuming II | 5 | 3 | | 1 | |
| 3362 | 1 | 1 | | 1 | |
| Practicum: Lighting II | 1 | 1 | | 1 | |
| 3364 | | | 1 | | 1 |

| | | | | | |
|--------------------------------|-----|-----|-----|-----|-----|
| Practicum: Properties II | | | 1 | | 1 |
| 3366 | 1 | 2 | 1 | 1 | |
| Practicum: Scenic II | 1 | 2 | 1 | 1 | |
| 3368 | 2 | 1 | 1 | 1 | |
| Practicum: Sound II | 2 | 1 | 1 | 1 | |
| 3375 | 2 | | 3 | 1 | 13 |
| Development Of Dramatic Art | 2 | | 3 | 1 | 13 |
| 3392 | | | | 3 | 1 |
| Costume History & Design | | | | 3 | 1 |
| 4428 | 1 | 2 | | | |
| Oral Interpretatn Practicum II | 1 | 2 | | | |
| 4432 | 21 | 7 | 8 | 24 | 19 |
| Acting Workshop II | 21 | 7 | 8 | 24 | 19 |
| 4438 | 4 | 7 | 4 | 7 | 11 |
| Senior Comprehensive Project | 4 | 7 | 4 | 7 | 11 |
| 4480 | 5 | | | 5 | |
| Theatre Business/Management | 5 | | | 5 | |
| 4484 | 9 | 5 | 3 | 2 | 1 |
| Theatre Business Practicum | 9 | 5 | 3 | 2 | 1 |
| 4488 | 1 | | 2 | | |
| Promotion Practicum | 1 | | 2 | | |
| 4490 | 31 | 12 | 5 | 3 | 1 |
| Directed Study in Theatre | 1 | | 1 | | 1 |
| DS/ Theatre Career Workshop | | | 1 | | |
| DS/Costuming | | 2 | | | |
| DS/Music Thea Audition Tech | 9 | 9 | | | |
| DS/Rehearsal & Performance-Hon | | 1 | | | |
| DS/Theatre-Music Theatre Voice | 11 | | | | |
| DS/Theatre-Stage Management | 10 | | | | |
| DS: Dramaturgy | | | | 2 | |
| DS: in Theater - Storytelling | | | 2 | | |
| DS: Stage Management | | | | 1 | |
| DS: Theatre Choreography | | | 1 | | |
| 4998 | | | | | 3 |
| Undergraduate Research | | | | | 3 |
| Grand Total | 746 | 767 | 712 | 738 | 923 |

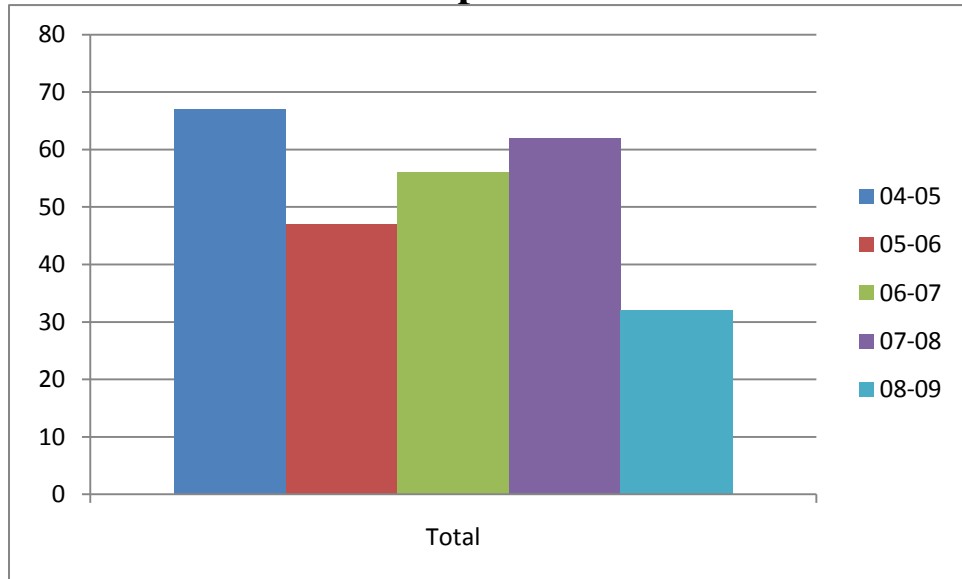
Service Courses

| Row Labels | 04-05 | 05-06 | 06-07 | 07-08 | 08-09 |
|-----------------------------|------------|------------|------------|------------|------------|
| THEA | 388 | 477 | 426 | 498 | 552 |
| 1120 | 383 | 475 | 424 | 497 | 552 |
| Theatre Appreciation | 312 | 368 | 284 | 289 | 383 |
| Theatre Appreciation-Online | 71 | 107 | 140 | 208 | 169 |
| 3354 | 5 | 2 | 2 | 1 | |
| Theatre Education Practicum | 2 | 2 | 2 | 1 | |
| Theatre Education Program | 3 | | | | |
| Grand Total | 388 | 477 | 426 | 498 | 552 |

Success Rates for Service Courses



Off Campus Courses



| | 04-05 | 05-06 | 06-07 | 07-08 | 08-09 |
|---------------------------------|-----------|-----------|-----------|-----------|-----------|
| Sum of CENSUS_ENROLLMENT | 67 | 47 | 56 | 62 | 32 |

Cost/Student Credit Hour

| College or School | Tot Labor & Exp. | # of section >5 | Org Sec Tot Fac. CrHr | FTE Faculty | Tot Enr Org Sec | Tot CrHr in Org Sec |
|-------------------|------------------|-----------------|-----------------------|-------------|-----------------|---------------------|
| Liberal Arts | \$ 2,974,440 | 610 | 1808 | 75.33 | 15117 | 45016 |
| Sci& Tech | \$ 3,757,196 | 539 | 1314 | 54.75 | 10291 | 27005 |
| Business | \$ 1,647,932 | 303 | 912 | 38.00 | 7114 | 21389 |
| Fine Arts | \$ 1,694,138 | 229 | 589 | 24.54 | 4678 | 12849 |
| Ed & HHP | \$ 2,401,064 | 264 | 696 | 29.00 | 5088 | 13638 |
| Nurs. & AHA | \$ 1,327,910 | 176 | 202 | 8.42 | 3373 | 6798 |
| TOTAL | \$ 13,802,679 | 2121 | 5521 | 230.04 | 45661 | 126695 |
| FSU Total | \$ 17,053,424 | | | | 46403 | 128485 |

| College or School | # of Majors | CrHr by Maj | FTE Majors | Dir. Cost/Inst CrHr | Dir. Cost/Stu FTE Maj |
|-------------------|-------------|-------------|------------|---------------------|-----------------------|
| Liberal Arts | 1079 | 23690 | 789.67 | \$ 66.08 | \$3,766.70 |
| Sci& Tech | 817 | 18911 | 630.37 | \$ 139.13 | \$5,960.33 |
| Business | 1083 | 24272 | 809.07 | \$ 77.05 | \$2,036.83 |
| Fine Arts | 122 | 2926 | 97.53 | \$ 131.85 | \$17,369.83 |
| Ed & HHP | 1450 | 28480 | 949.33 | \$ 176.06 | \$2,529.21 |
| Nurs. & AHA | 611 | 12991 | 433.03 | \$ 195.34 | \$3,066.53 |
| TOTAL | 5162 | 111270 | 3709.00 | \$ 108.94 | \$3,721.40 |
| FSU Total | 5801 | 118699 | 3956.63 | \$ 132.73 | \$4,310.08 |

This table is based on FY 2007-2008 and is based on the school finances rather than the discipline. Some explanation is necessary of the Direct Cost per Full-Time Equivalent Student Major. It suggests \$17,369.83 was spent on 97.53 FET Majors. All of our expenditures are not for majors as we have participants in our various activities from all academic areas of Fairmont State University as well as Pierpont Community and Technical College. Such things as play productions, gallery exhibitions, marching band, wind ensemble concerts, choral concerts, symphony concerts, speech team competitions, and debate team are expensive and not limited to majors from the school as participants or audience. In addition, if we were to use 07-08 budget and apply current major counts (advisees in the school), fall 2008, 156 majors calculates to a \$10,859.48 direct cost per major; spring 2009, 179 majors calculates to a \$9,965.17 direct cost per major; or an average \$10,292.13 for the current year.

General Education Requirements Met

GENERAL STUDIES REQUIREMENTS FOR THE BACHELOR'S DEGREE

THE FIRST YEAR EXPERIENCE 15-16- HOURS
 (To be completed within the first 45 credit hours)
 (Students are required to complete all Developmental Skills
 courses within the first 32 credit hours.)

| | Hrs. |
|---|------|
| ENGL 1104 Written English I # | 3 |
| ENGL 1108 Written English II # | 3 |
| INFO 1100 Computer Concepts & Applications (or demonstrated competency) | 3 |
| MATH 1102 or above (excluding 1106 and courses below 1102) | 3-4 |
| COMM 2200, or 2201, or 2202 #. | 3 |
| #Designates courses with prerequisites | |
| SCIENTIFIC DISCOVERY | 8 |
| (courses selected from the approved University list) | |
| CULTURAL/CIVILIZATION EXPLORATION | 9 |
| (courses selected from the approved University list) | |
| ARTISTIC/CREATIVE EXPRESSION & INTERDISCIPLINARY/ADVANCED STUDIES OPTION | 0 |
| (this general education requirement is met by courses taken for the major) | |
| SOCIETY/HUMAN INTERACTIONS | 6 |
| (courses selected from the approved University list) | |
| APPROVED WRITING INTENSIVE COURSE (a course required for the major satisfies this requirement) | |

Assessment Requirement

The assessment of the program is based on the evaluation of student coursework, outside adjudication, individual student portfolio reviews and a senior comprehensive project. These assessments have been created in accordance with NAST (National Association of Schools of Theatre) guidelines.

Coursework: All of the theatre courses in the B.A. include performance assessments. The assessment tasks are performance based and include opportunities for self, peer and faculty

assessment. Students are expected to maintain a "B" average in the major and at least a "C" in all required major courses.

Adjudication: Adjudication from outside entities is an important part of the assessment of individual student progress and of departmental goals. The department enters the Kennedy Center's American College Theatre Festival and supports student participation in the West Virginia Theatre Conference, the Southeastern Theatre Conference and the University/Resident Theatre Association. Involvement in these activities provides students with individual feedback and provides faculty the opportunity to assess how FSU theatre students compare to students from other institutions.

Portfolio Reviews: The faculty is currently piloting a portfolio process that includes a mid-program and senior professional portfolio review.

A. Mid-program Review: The students are required to keep an assessment portfolio that is assessed at the end of the 4th semester of regular coursework. The purpose of this mid-program review is to assess student progress in general education and theatre and help students articulate their academic goals for the next four semesters and their goals for summer employment/internships. The mid-program portfolio is organized in three parts.

Part One - General Education - In part one of the assessment portfolio, student must show evidence they are working toward competency in reading, writing, critical thinking, mathematics and an understanding of basics concepts in science, history, literature and culture.

Part Two - Theatre Competencies - In this part of the portfolio, the students must show evidence they are working toward

1. The ability to think conceptually and critically about text, performance, and production.
2. An understanding of playwriting and production processes, aesthetic properties of style, and the way these shape and are shaped by artistic and cultural forces.
3. An acquaintance with a wide selection of theatre repertory including the principal eras, genres, and cultural sources.

4. The ability to develop and defend informed judgments about theatre.

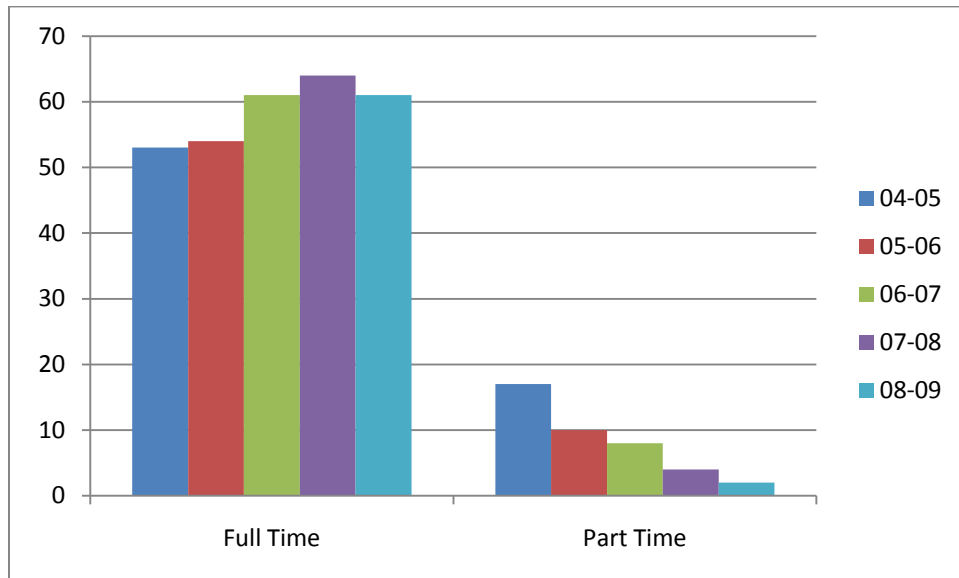
Part Three - Participation Resume - The student resume should demonstrate the student is actively working toward participation in all and proficiency in at least two areas of theatre.

B. Senior Professional Portfolio - This portfolio is created in with the mentorship of a faculty member whose area of expertise best fits the student's professional interests. The organization of the portfolio is based on professional standards and should demonstrate the student's readiness for employment or graduate study. This portfolio will be reviewed in conjunction with the senior comprehensive project.

Senior Comprehensive Project - This project, developed under the guidance of a faculty mentor, demonstrates the candidate's capacity to create, perform, research, manage, or facilitate/teach theatre in collaboration with others. The project must be approved by the faculty and must include a written component and a final presentation, which includes his/her professional portfolio. Through this project and the portfolio, the student must demonstrate

1. Ability in areas of performance and production or playwriting appropriate to individual needs and interests, consistent with the goals and objectives of the program.
2. An understanding of procedures and approaches for realizing a variety of theatrical styles.
3. Intermediate to advanced competence in one or more theatre specializations in creation, performance, scholarship, or teaching.

Adjunct Use



| Row Labels | 04-05 | 05-06 | 06-07 | 07-08 | 08-09 |
|--------------------|-----------|-----------|-----------|-----------|-----------|
| Full Time | 53 | 54 | 61 | 64 | 61 |
| Part Time | 17 | 10 | 8 | 4 | 2 |
| Grand Total | 70 | 64 | 69 | 68 | 63 |

Retention Rates

Retention Calculations for Theatre
First-time Students

| Fall | Cohort Size of Theatre First-time Freshmen | Count of this Fall Cohort Retained until Next Fall IN the Theatre Program | Theatre FT Program Retention Rate | Count of this Fall Cohort Retained until Next Fall at FSU | PCTC Retention of Theatre FT Cohort | Count of this Fall Cohort Retained until Next Fall at FSU OR PC&TC | FSU or PC&TC Retention of Theatre FT Cohort |
|------|--|---|-----------------------------------|---|-------------------------------------|--|---|
| 2003 | 5 | 2 | 40.00% | 3 | 60.00% | 3 | 60.00% |
| 2004 | 4 | 3 | 75.00% | 4 | 100.00% | 4 | 100.00% |
| 2005 | 6 | 3 | 50.00% | 4 | 66.67% | 4 | 66.67% |
| 2006 | 5 | 2 | 40.00% | 2 | 40.00% | 2 | 40.00% |
| 2007 | 7 | 5 | 71.43% | 5 | 71.43% | 5 | 71.43% |
| 2008 | 9 | 4 | 44.44% | 6 | 66.67% | 6 | 66.67% |

| | | | | | | | |
|--------------|------|------|--------|------|--------|------|--------|
| 6-Yr Mean | 6.00 | 3.17 | 53.48% | 4.00 | 67.46% | 4.00 | 67.46% |
|--------------|------|------|--------|------|--------|------|--------|

Retention Calculations for Theatre
Transfer-In Students

| | Cohort Size of Theatre Transfer- In Student | Count of this Fall Cohort Retained until Next Fall IN the Theatre Program | Theatre Transfer- In Retention Rate | Count of this Fall Cohort Retained until Next Fall at FSU | PCTC Retention of Theatre Transfer- In Cohort | Count of this Fall Cohort Retained until Next Fall at FSU OR PC&TC | FSU or PC&TC Retention of Theatre Transfer- In Cohort |
|--------------|--|---|---|---|--|--|---|
| Fall | | | | | | | |
| 2003 | 2 | 1 | 50.00% | 1 | 50.00% | 2 | 100.00% |
| 2004 | 0 | 0 | #DIV/0! | 0 | #DIV/0! | 0 | #DIV/0! |
| 2005 | 2 | 1 | 50.00% | 1 | 50.00% | 1 | 50.00% |
| 2006 | 1 | 1 | 100.00% | 1 | 100.00% | 1 | 100.00% |
| 2007 | 1 | 1 | 100.00% | 1 | 100.00% | 1 | 100.00% |
| 2008 | 1 | 1 | 100.00% | 1 | 100.00% | 1 | 100.00% |
| 6-Yr Mean | 1.17 | 0.83 | 80.00% | 0.83 | 80.00% | 1.00 | 90.00% |

This table does not include any current student or transfer student who may have enrolled and then changed to a major in theatre.

Previous Program Reviews

At the June 30, 2005, Fairmont State Board of Governors meeting the previous Theatre Arts Program Review was accepted. The Board recommendation was that the Bachelor of Arts in Theatre be continued with corrective action. A follow up report was requested that would include the following:

1. A report on plans to follow up on employers and graduates.
2. A plan to stem the tide of students opting for the RBA degree.
3. A review of safety standards, both in preparation for the new building and with regard to the present scene shop.

4. A consideration of whether an advisory board would be helpful.

A follow up report was submitted on December 7, 2005, (Appendix B) and was on the agenda for the Board of Governors at their meeting of February 23, 2006. It was moved and seconded that the Board accept the follow up report and the motion carried.

Program Requirements

| Degree Definition Area | Hours per Degree Def. | Theatre Arts Hours | |
|------------------------|-----------------------|--------------------|-------------------------------|
| General Ed | 32-42 | 37 | See General Ed Courses Above |
| Major | 32-65 | 48 | See Course Requirements Below |
| Electives | Min 21 | 37 | |
| Total | Max 128 | 128 | |

| | |
|--------------------------------|---------------|
| BACHELOR OF ARTS IN THEATRE | 128 SEM. HRS. |
| Theatre Curriculum (see below) | 48 SEM. HRS. |
| Liberal Studies Requirements | 37SEM. HRS. |
| Free Electives | 43 SEM. HRS. |

| | |
|----------------------------|--------------|
| Theatre Curriculum | 48 SEM. HRS. |
| Required Courses (39 hrs.) | |

| | |
|--|---|
| THEA 1105 VOICE & DICTION | 3 |
| THEA 1110 INTRODUCTION TO THEATRE | 3 |
| THEA 1114 BODY TRAINING AND STAGE MOVEMENT | 3 |
| THEA 1140 THEATRICAL PRODUCTION | 2 |
| THEA 1148 THEATRE WORKSHOP* | 1 |

| | | |
|--------------|-----------------------------------|---|
| THEA 1151 | TEXT ANALYSIS | 3 |
| THEA 2212 | THEATRICAL MAKEUP | 1 |
| THEA 2230 | ACTING | 3 |
| THEA 2238 | ACTING WORKSHOP I | 1 |
| -OR - | | |
| THEA 4432 | ACTING WORKSHOP II | 1 |
| THEA 2244 | INTRODUCTION TO THEATRICAL DESIGN | 3 |
| THEA 2262 | PRODUCTION PRACTICUM I | 1 |
| -OR- | | |
| THEA 4462 | PRODUCTION PRACTICUM II | 1 |
| THEA 3336 | DIRECTING | 3 |
| THEA 3340/41 | THEATRE HISTORY I, II | 6 |
| THEA 3375 | DEVELOPMENT OF DRAMATIC ART | 3 |
| THEA 4438 | SENIOR COMPREHENSIVE PROJECT | 3 |

*One hour of THEA 1148 (Theatre Workshop) must be taken concurrently with THEA 1140 (Theatrical Production). THEA 1148 or 3348 taken separately from THEA 1140 will not fulfill the requirement.

Theatre Electives (9 hrs.)

(At least 6 hours must be upper-division.)

| | | |
|-----------|--------------------------------|-----|
| THEA 1199 | SPECIAL TOPICS IN THEATRE | 1-3 |
| THEA 2220 | ORAL INTERPRETATION | 3 |
| THEA 2251 | PLAYWRITING | 3 |
| THEA 3305 | VOICE FOR THE STAGE | 3 |
| THEA 3314 | ADVANCED THEATRICAL MAKEUP | 1 |
| THEA 3326 | PERFORMANCE STUDIES | 3 |
| THEA 3330 | ADVANCED ACTING | 3 |
| THEA 3344 | ADVANCED THEATRICAL DESIGN | 3 |
| THEA 3346 | CREATIVE PUPPETRY | 3 |
| THEA 3350 | CHILDREN'S DRAMA | 3 |
| THEA 3352 | CREATIVE DRAMA | 3 |
| THEA 3392 | COSTUME HISTORY AND DESIGN | 3 |
| THEA 4480 | THEATRE BUS. MANMENT. & PROMO. | 3 |
| THEA 4490 | DIRECTED STUDY IN THEATRE | 1-3 |

Recommended Related Courses for Theatre Majors:

| | | |
|----------|------------------|---|
| ART 1120 | ART APPRECIATION | 3 |
|----------|------------------|---|

| | | |
|-----------|------------------------|-----|
| ART 1142 | FOUNDATIONS OF DRAWING | 3 |
| ENGL 3374 | SHAKESPEARE | 3 |
| ENGL 3390 | MODERN DRAMA | 3 |
| MUSI 1120 | MUSIC APPRECIATION | 3 |
| MUSI 1139 | VOICE CLASS I | 1 |
| MUSI 1141 | VOICE I-IV | 1-2 |

Faculty Data

Please see attached faculty vitae in Appendix A

Accreditation/National Standards

Please see attached report of the outside reviewer in Appendix C which addresses both accreditation and national standards.

Necessity (§ 4.1.3.3)

Recent graduates from the B.A. in Theatre program at Fairmont State University are either enrolled in graduate theatre degree or certificate programs, employed in areas both in and outside theatre, or pursuing additional undergraduate degrees while applying for graduate theatre programs.

One graduate is enrolled in the MFA Technical Direction program at Florida State University and another is enrolled in a post-baccalaureate certificate program at the Stella Adler Studio in Chicago.

Four graduates are employed in theatre or related positions: camera operator for the local CBS affiliate; scene designer and technical director for high school and community theatres; assistant stage manager for a professional theatre company; Marketing Associate for Actors Theatre of Louisville.

Those who are employed full time outside the area of theatre have reported that they continue to pursue theatre related opportunities such as production assistant for a beauty pageant, volunteer director for a school play, running crew for West Virginia Public Theatre, auditioning for roles in Los Angeles, and performing in community theatre venues.

The B.A. in Theatre program at Fairmont State University is the only Liberal Arts Program of its kind in Northern West Virginia. West Virginia University offers two baccalaureate programs in theatre, the B.A. and the B.F.A. The latter is pre-professional in nature. The focus of the experiential theatre work at West Virginia University is at the graduate level. Often undergraduate students do not have the opportunity for on-stage performance or technical design experience until they are graduate students. Additionally, the West Virginia University program seems to attract a different clientele than the Fairmont State University program. The programs have never seemed to compete with one another; rather, they have different focuses and have served different student populations.

In addition to the baccalaureate programs at West Virginia University, there are several programs available in other areas of the state. Marshall University offers a B.F.A. degree that, like West Virginia University's, is pre-professional in nature. Concord University, Bethany College, and Davis & Elkins University all offer the B.A. in Theatre. These programs are smaller in size and scope than Fairmont State University's program. Their curricular offerings and production programs are not as extensive, and they have fewer full-time faculty members. West Virginia Wesleyan University offers B.A. and B.F.A. degrees. The latter is a pre-professional Musical Theatre degree. The former is smaller in size, scope, and faculty.

Consistency with Mission (§ 4.1.3.4)

Fairmont State University

Fairmont State University, a comprehensive, multi-site, selective institution offers a quality education in a diverse and supportive learning environment that fosters individual growth, professional and career development, lifelong learning, global understanding, and a commitment to excellence in academic and community pursuits. Serving the citizenry of north-central West Virginia and beyond, Fairmont State University is a student centered institution of first choice among students who desire a flexible and relevant learning experience. The University provides a well-rounded education, enabling students to gain the knowledge and skills needed for self-fulfilling, responsible citizenship and employability in a rapidly changing global environment.

The Mission of Fairmont State University is to provide opportunities for individuals to achieve their professional and personal goals and discover roles for responsible citizenship that promote the welfare of all.

Specifically, the mission of Fairmont State University is to provide programs needed by those in its geographic service area, to the extent permitted by its financial and human resources and its assigned role in the state's system of public higher education.

This mission is accomplished by meeting these objectives:

- Offering a broad range of traditional baccalaureate degree programs in the arts and sciences, teacher education and business administration.
- Providing opportunities for occupationally-oriented baccalaureate study through expansion of existing industrial technology programs and the development of additional career-related curricula.
- Bringing selected study opportunities into communities in the University's service region through the use of the mass media, regional educational centers, external degree programs and other forms of nontraditional study.
- Encouraging a broad segment of the populace, including various age groups and the economically deprived, to avail themselves of educational opportunities.
- Serving the greatest number of students by holding University costs at the lowest possible level and providing financial support to those who need it to gain equal access to higher education.
- Relating the breadth of the curriculum to the availability of appropriate employment opportunities and the needs of business, industrial and public service agencies in the University's service area.
- Offering continuing education programs to provide career enhancement, cultural enrichment and personal skill development.
- Providing advisory, counseling, and placement services to enable students to make satisfactory decisions about academic and personal problems and to make successful career and employment choices.
- Offering a variety of cultural, recreational, and social activities to complement academic pursuits.

The Fairmont State University Theatre Arts Program

Provides the following degree programs:

- B.A. degree in Theatre
- B.A. degree in Theatre Education
- B.A. degree in Oral Communication (in conjunction with the Communication Program)
- Minor in Theatre

The theatre curriculum and activities are designed to provide the highest level of professional education for the potential teacher, the creative artist and the scholar of theatre arts, and to play a major role in the cultural life of the university campus and the community.

Overview of the Theatre Arts Program

The Department of Communication and Theatre Arts has designed a program to provide students with a variety of choices for developing their knowledge and skills through study and performance. By building a base of performance experience through classroom exercises, public performances, and competition, students can develop communication expertise which will prepare them to meet the challenges of the future. In order that a student in any of these programs may be recommended for graduation by the Communication and Theatre Arts faculty, s/he must perform in one or more of the department faculty-directed/sponsored public performance areas listed below. A student must reach a satisfactory level of proficiency in at least one of the performance areas. Each student's performance and level of proficiency will be periodically appraised by the faculty including: acting, technical crews, directing, designing, public relations, house management, business management, etc., with Masquers, Town & Gown, or studio theatre presentations.

Specifically, the mission of Fairmont State University is to provide programs needed by those in its geographic service area, to the extent permitted by its financial and human resources and its assigned role in the state's system of public higher education.

The Theatre Arts Program is consistent with this mission by meeting these objectives:

- Providing opportunities for occupationally-oriented baccalaureate study through expansion of existing industrial technology programs and the development of additional career-related curricula.
- Relating the breadth of the curriculum to the availability of appropriate employment opportunities and the needs of business, industrial and public service agencies in the University's service area.
- Offering a variety of cultural, recreational, and social activities to complement academic pursuits.
- Encouraging a broad segment of the populace, including various age groups and the economically deprived, to avail themselves of educational opportunities.

APPENDIX A
FACULTY VITAE

APPENDIX B

Previous Program Review Follow-up Report

APPENDIX C

REPORT OF THE OUTSIDE REVIEWER
